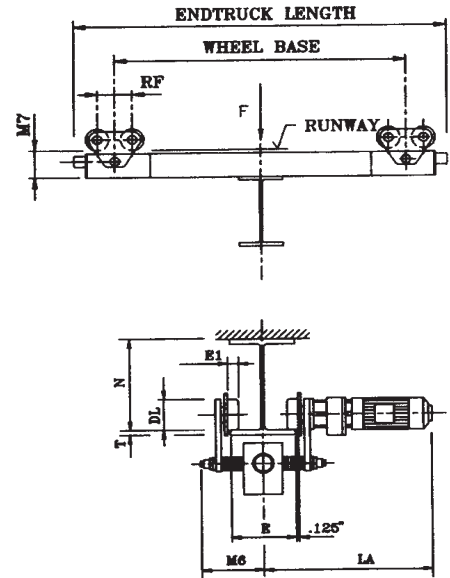
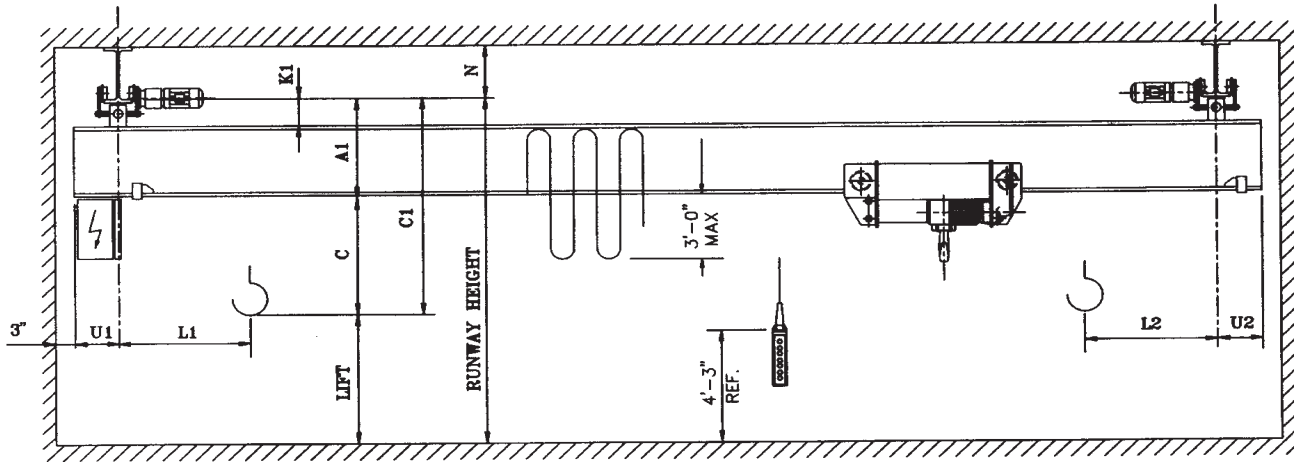


# **DLVM & EDL Under Running Single Girder Cranes**



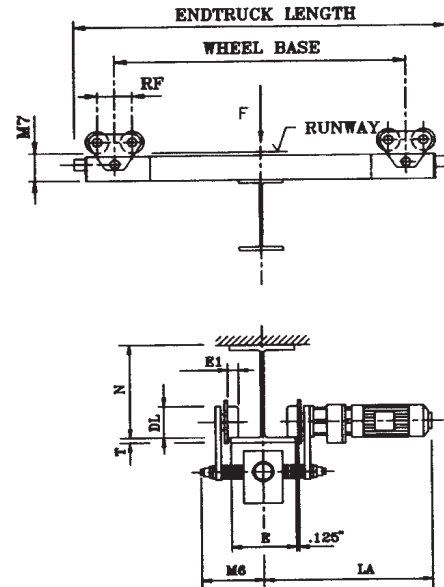
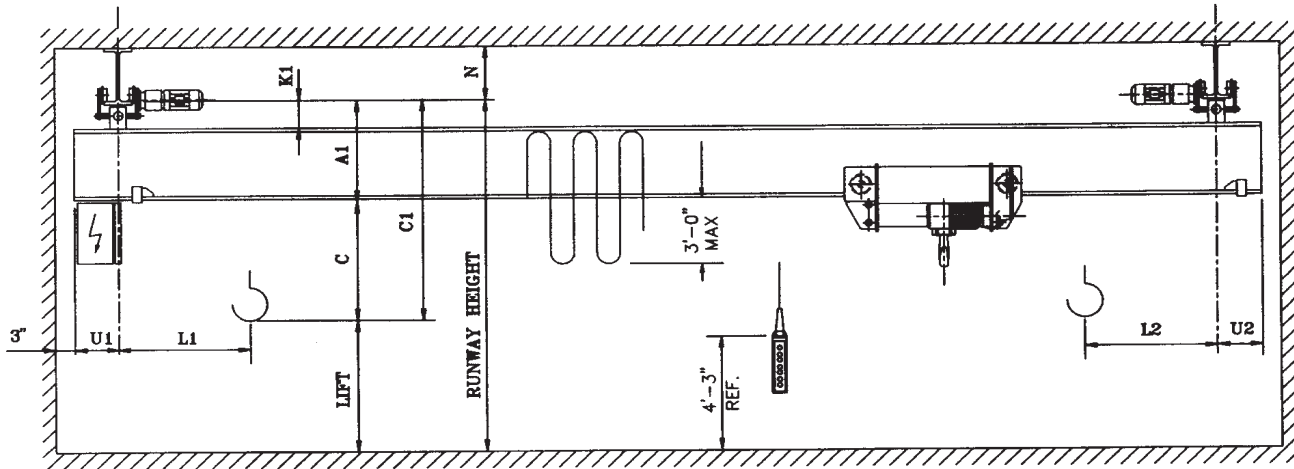
Note: See last page of DLVM section for drawing of low headroom EDL under running style.

DL	E min	E1	LA	M6	M7	N	RF	T
4	3.25	0.875	18	8.5	6.375	8	7.375	0.875

Max. U1/U2 = 20"

## Single Girder Under Running Crane Type DLVM2

Cap. Tons	Hoist		Lift Ft.	Trolley		Endtruck			Bridge						Corner Load F Lbs.	Shipping Weight Lbs.		
	Type Reeving	Speed FPM		Type Weight	HP per Motor 65/16 FPM	Wheel Dia. In.	Base Ft.-In.	Length Ft.-In.	HP per Motor 120/30 FPM	Span Ft.	U1/U2	L1 In.	L2 In.	A1 In.			C1 In.	K1 In.
	Rope Dia.	HP		620 lbs.	.29/.07													
2	820 4/1 0.25	16/2.6 .4/.059	20	EM832L6 163.41.060 620 lbs.	.29/.07	4	5'-0"	6'-3"	2x0.33	20	12	-2	24	36	8	5630	3120	
													28	36		5800	3420	
													32	36		5990	3920	
													36	38		6260	4220	
													40	38		6650	4720	
													44	40		6920	5280	
													48	42		7340	7070	
													52	42		7800	7520	
													56	42		8550	8094	
													60	44		9100	9116	



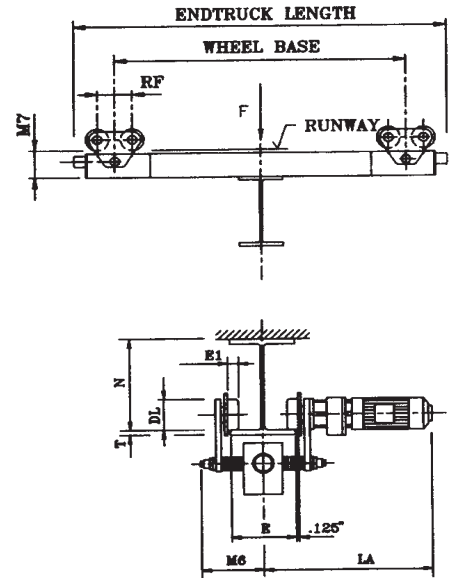
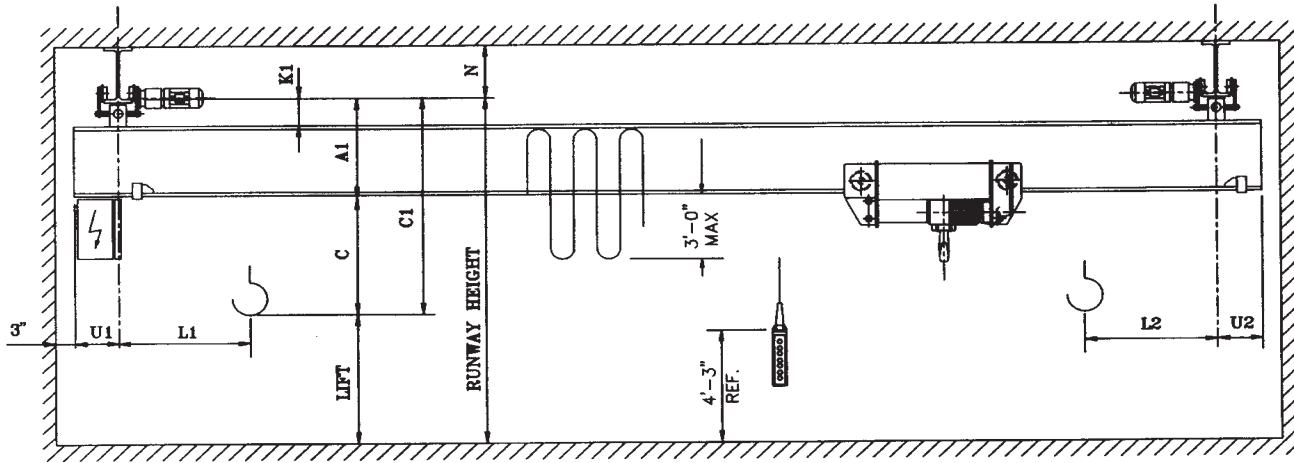
Note: See last page of DLVM section for drawing of low headroom EDL under running style.

DL	E min	E1	LA	M6	M7	N	RF	T
4	3.25	0.875	18	8.5	6.375	8	7.375	0.875
5.125	3.25	1	20	10	8.75	8.75	8.25	1.125

Max. U1/U2 = 20"

## Single Girder Under Running Crane Type DLVM3

Cap. Tons	Hoist			Trolley		Endtruck				Bridge						Corner Load F Lbs.	Shipping Weight Lbs.	
	Type Reaving Rope Dia.	Speed FPM HP	Lift Ft.	Type Weight	HP per Motor 65/16 FPM	Wheel		HP per Motor 120 VFPM	Span Ft.	U1/U2	L1 In.	L2 In.	A1 In.	C1 In.	K1 In.			
						Dia. In.	Base Ft.-In.											Length Ft.-In.
3	832 4/1 0.25	16/2.6 0.4/0.59	20	EM832L6 162.41.060 620 lbs.	.29/07	4	5'-0"	6'-3"	2 x 0.33	24	20	12	2	20	38	8	8170	3720
								6'-6"		28				20	38	8	8520	3960
								8'-0"		32				22	40	8	8760	4520
								9'-0"		36				26	42	8	9270	6020
										40				26	42	10	9640	6320
										44				26	42	10	10170	7270
	5.125	6'-6"	8'-0"	2 x 0.75	48	28	44	10	10510	7820								
					52	28	44	10	11020	8920								
					56	28	44	10	11700	9720								
					60	28	44	10	12770	11080								



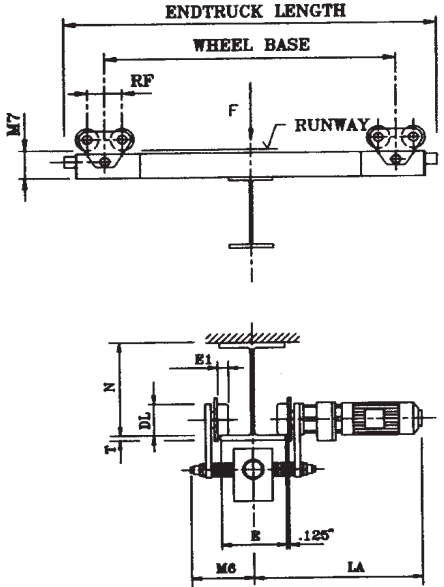
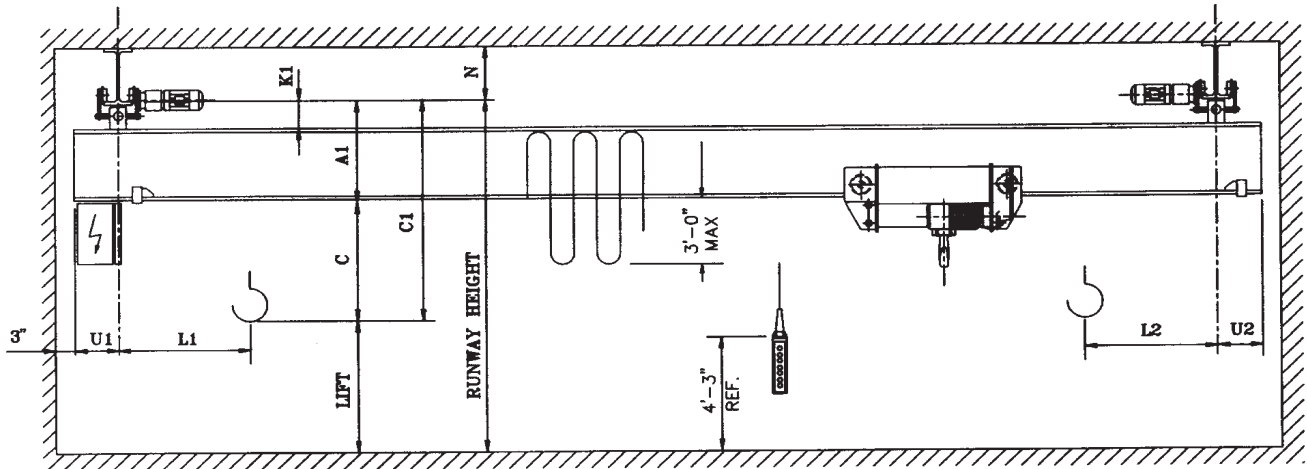
Note: See last page of DLVM section for drawing of low headroom EDL under running style.

DL	E min	E1	LA	M6	M7	N	RF	T
5.125	3.25	1	20	10	8.75	8.75	8.25	1.125

Max. U1/U2 = 20"

## Single Girder Under Running Crane Type DLVM4

Cap. Tons	Hoist			Trolley		Endtruck			Bridge						Corner Load F Lbs.	Shipping Weight Lbs.		
	Type Reeving Rope Dia.	Speed FPM	Lift Ft.	Type Weight	HP per Motor 65/16 FPM	Wheel		HP per Motor 120 VFPM	Span Ft.	U1/U2	L1 In.	L2 In.	A1 In.	C1 In.			K1 In.	
		HP				Dia. In.	Base Ft.-In.	Length Ft.-In.										
5	1050 4/1 0.4	16/2.6 7.86/1.26	20	EM1050L6 162.41.060 775 Lbs.	.59/1.144	5.125	5'-0"	6'-6"	2x0.75	24	20	14	3	26	46	10	12920	4865
										28				26	46		13240	5215
										32				28	48		13420	5915
										36				28	48		13850	6575
										40				28	48		14220	7395
										44				28	48		14680	8435
	48	31	51	15310	9055													
	52	31	51	15860	10475													
	56	31	51	16520	12055													
	60	34	54	17640	13655													



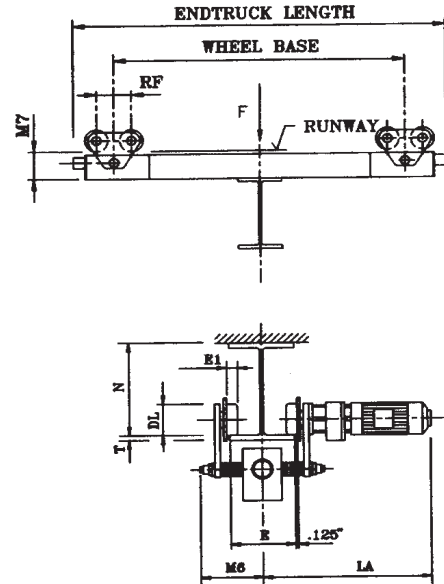
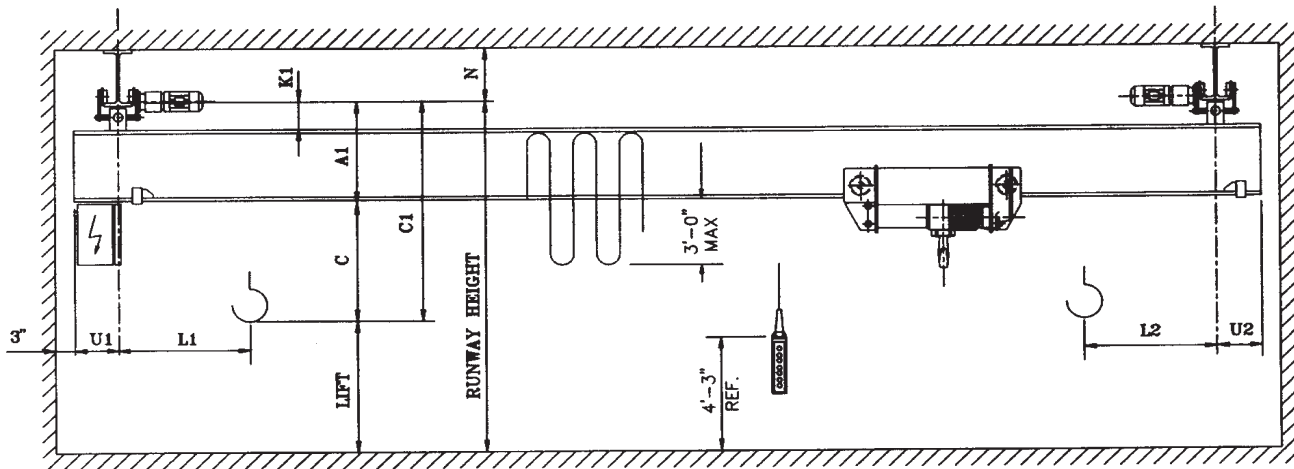
Note: See last page of DLVM section for drawing of low headroom EDL under running style.

## Single Girder Under Running Crane Type DLVM5

DL	E min	E1	LA	M6	M7	N	RF	T
5.125	3.25	1	20	10	8.75	8.75	8.25	1.125
6.25	3.25	1	22	10	9	10.25	10.72	1.125

Max. U1/U2 = 20"

Cap. Tons	Hoist			Trolley		Endtruck			Bridge					Corner Load F Lbs.	Shipping Weight Lbs.				
	Type Reeving Rope Dia.	Speed FPM	Lift Ft.	Type Weight	HP per Motor 65/16 FPM	Wheel		HP per Motor 120 VFPM	Span Ft.	U1/U2	L1 In.	L2 In.	A1 In.			C1 In.	K1 In.		
						Dia. In.	Base Ft.-In.	Length Ft.-In.											
7.5	2063 4/1 0.4	17/2.8	20	EM2063L6 171.41.060 1200 Lbs.	.40/.10	5.125	5'-0"	6'-6"	2 x 0.75	24	20	23	10	26	49	10	17380	5600	
										28				28	51	10	17740	6050	
										32				28	51	10	18060	6900	
										36				28	51	10	18450	7300	
										40				28	51	10	18690	7800	
										44				31	54	10	19200	8580	
	6.25			33	EM2063L6 171.41.100 1320 Lbs.		6.25	6'-6"	8'-0"	2 x 1.0	48				34	57	12	19820	10400
											52				34	57	12	20530	11060
											56				37	60	12	21340	12990
											60				37	60	12	22130	14920



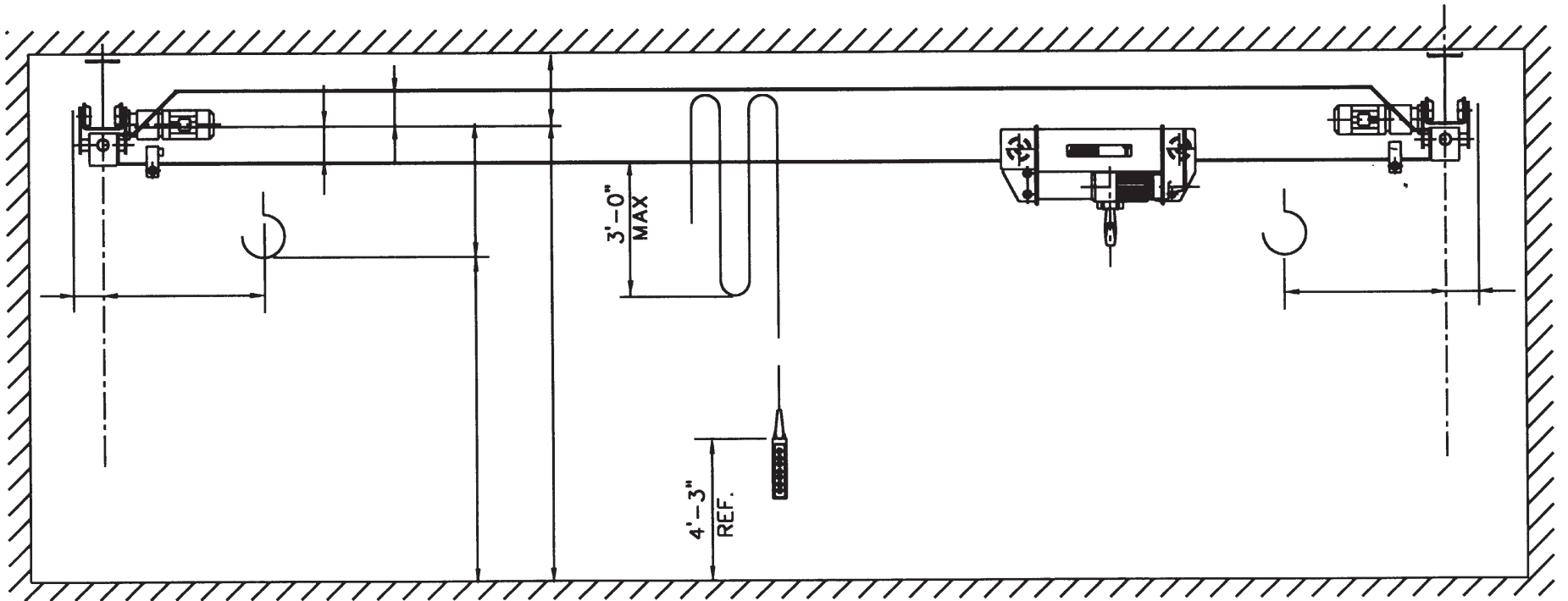
Note: See last page of DLVM section for drawing of low headroom EDL under running style.

## Single Girder Under Running Crane Type DLVM6

DL	E min	E1	LA	M6	M7	N	RF	T
6.25	3.25	1.125	22	10	9	10.25	10.72	1.125

Max. U1/U2 = 20"

Cap. Tons	Hoist			Trolley		Endtruck			Bridge							Corner Load F Lbs.	Shipping Weight Lbs.	
	Type Reeving Rope Dia.	Speed FPM HP	Lift Ft.	Type Weight	HP per Motor 65/16 FPM	Wheel		HP per Motor 120 VFPM	Span Ft.	U1/U2	L1 In.	L2 In.	A1 In.	C1 In.	K1 In.			
						Dia. In.	Base Ft.-In.											Length Ft.-In.
10	3100 4/1 0.5	16/2.6 16.0/2.5	20 33	EM3100L6 162.41.060 2150 Lbs.	.59/.14	6.25	5'-6"	6'-10"	2 x 1.0	24	20	23	10	28	51	12	24660	8940
										28				25000	9440			
										32				25400	10340			
										36				25980	10940			
										40				26300	11640			
										44				26980	12340			
	48	27340	13940															
	52	28120	15340															
	56	28940	16600															
	60	29980	19480															



## EDL Low Headroom Under Running Crane