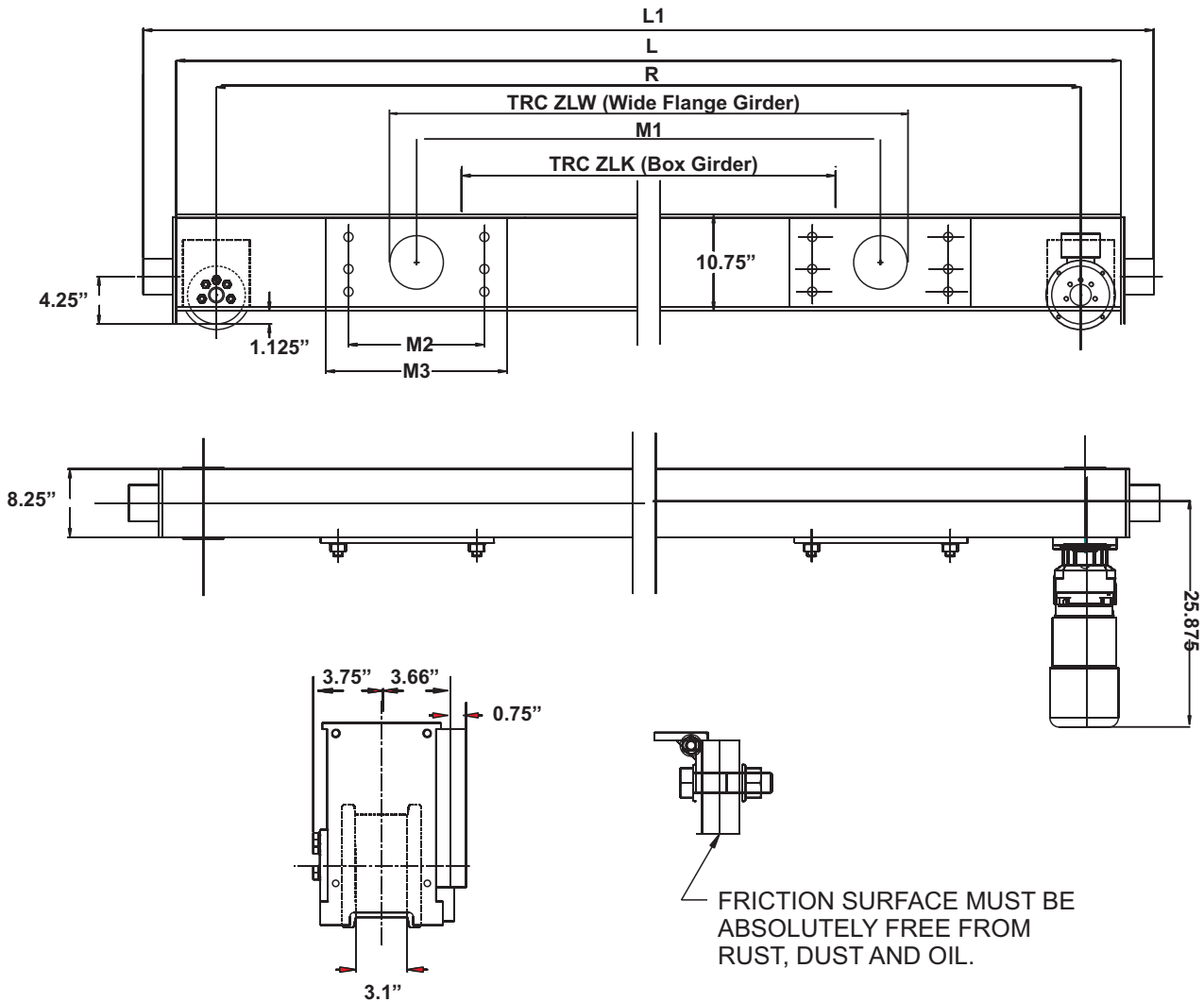


Specifications for EMH Style HSZ160 Top Running Double Girder Endtrucks 6.25 in. Diameter Wheels



Model No.	Wheel Load	Moving Mass Lbs.	120 fpm Motor HP	Wheel Base (R) Ft.-In.	L Ft.-In.	L1 Ft.-In.	M1 In.	M2 In.	M3 In.	TRC ZLK In.	TRC ZLW In.	Weight per Pair
HSZ-160.274.2700	16,410	35,200	2 x 1.0	8-10	9-7	10-1	71	12	16	63	N/A	1352
HSZ-160.274.2900	16,410	35,200	2 x 1.0	9-6	10-3	10-9	75	16	20	63	78.75	1452
HSZ-160.274.3200	16,410	35,200	2 x 1.0	10-6	11-3	11-9	75	16	20	63	78.75	1592
HSZ-160.274.3800	16,410	35,200	2 x 1.0	12-6	13-3	13-9	94.75	20	24	78.75	98.5	1972
HSZ-160.224.4600	15,140	35,200	2 x 1.0	15-0	15-9	16-3	114.5	20	24	98.5	N/A	2232