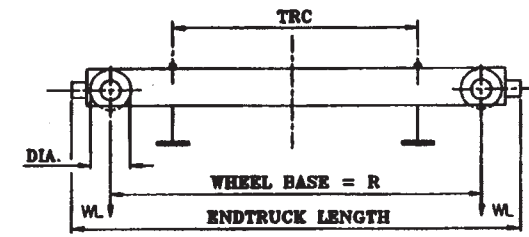


Double Girder Crane Type ZLK10



- Notes:
1. Runway electrification is standard on left side.
 2. Wheel loads do not include impact.
 3. Shipping weights include hoist and trolley.

WHEEL LOADS INDICATED WITHOUT IMPACT OR WALKWAY

Cap. Tons	Hoist			Trolley			Endtruck			Bridge							Wheel Load Lbs.	Shipping Weight Lbs.	
	Type Reeving Rope Dia.	Speed FPM HP	Lift Ft.	Type Weight	HP per Motor 80/20 PPM VFD	TRC In.*	Wheel			Span Ft.	L1 In.	L2 In.	C1 In.	A1 In.	K1 In.	Z In.			
							Dia. In.	Base Ft.-In.	Length Ft.-In.										HP per Motor 120 VFD
50	6500 8/2 0.75	14/2.3	20	EM6500L6 141.82.060 6800 lbs.	2x1.5	98.5	16	9'-6"	12'-0"	2x5.0	24	48	48	5	16	64	10	58058	25886
											28							55944	26021
											32							57204	27782
											36							58400	30102
											40							59320	31647
											44							60153	33292
		48	61155	35922															
		52	62440	39884															
		56	63167	41783															
		60	64436	45982															
		64	65138	48034															
		68	66345	52181															
	72	67036	54357																
	76	68142	58238																
	80	69036	61324																
	84	70127	64533																
	88	70855	67745																
	92	72300	71543																
	96	73295	76830																
	100	74582	81642																
	50*	2x24.9/3.9	50*	EM6500L6 141.82.150 8000 lbs.	2x1.5	98.5	20	12'-6"	15'-4"	2x7.5	-10	79	10	76	67036	54357			
														80	68142	58238			
														84	69036	61324			
									88					70127	64533				
92									70855					67745					
96									72300					71543					

* For 50 ft. lift, minimum TRC =98.50 in.