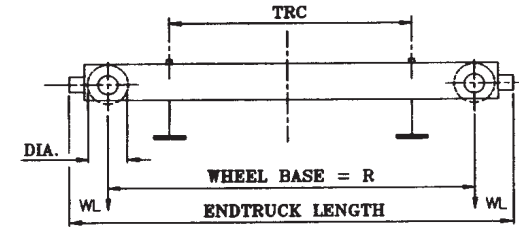
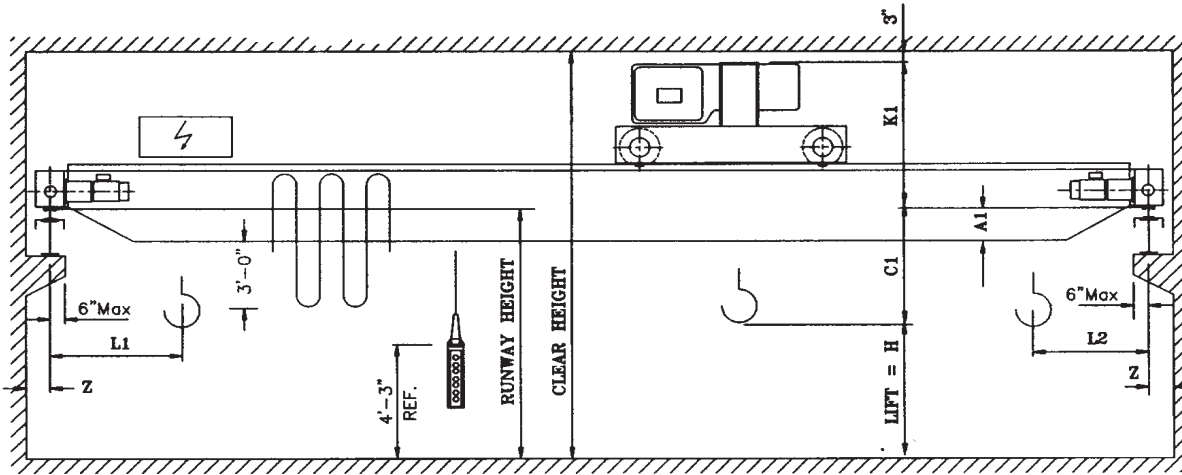


ZLW
Top Running
Double Structural Girder
Cranes



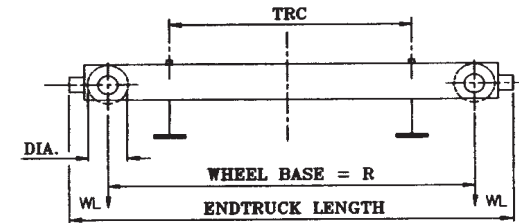
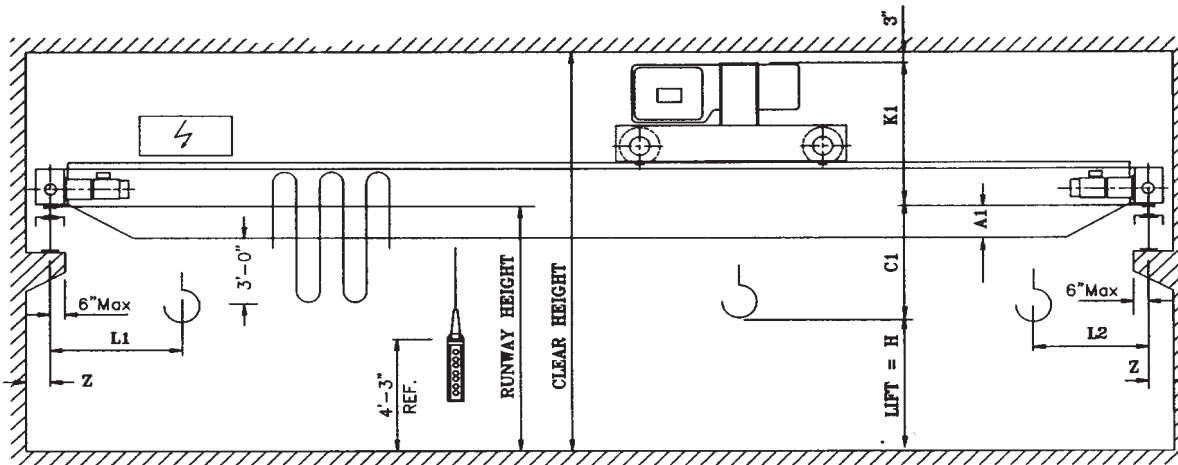
Notes:

1. Runway electrification is standard on left side.
2. Wheel loads do not include impact.
3. Shipping weights include hoist and trolley.

WHEEL LOADS INDICATED WITHOUT IMPACT OR WALKWAY

Double Girder Crane Type ZLW1

Cap. Tons	Hoist			Trolley			Endtruck				Bridge						Wheel Load Lbs.	Shipping Weight Lbs.				
	Type Reeving Rope Dia.	Speed FPM HP	Lift Ft.	Type Weight	HP per Motor 80 FPM VFD	TRC In.	Wheel		Length Ft.-In.	HP per Motor 120 FPM VFD	Span Ft.	L1 In.	L2 In.	C1 In.	A1 In.	K1 In.			Z In.			
							Dia. In.	Base Ft.-In.														
5	1050 4/1 0.375	16/2.6 6.4/0.8	20	EM1050L6	2 x 0.5	78.75	6.25	9'-6"	11'-0"	2x0.75	24	32	32	-3	4	31	6	7390	6123			
				161.41.060										-3	4	31	6	7603	6637			
				1000 lbs.										-3	4	31	6	7933	7705			
														-3	6	31	6	8257	8805			
														-5	8	33	7	8878	11130			
			33	EM1050L6	161.41.100	1100 lbs.	8	11'-2"	2X1.0	52	60	56	52	32	32	-5	8	33	7	9380	13008	
																	-5	8	33	7	9865	14842
																	-5	11	33	7	10276	16396
																	-5	11	33	7	10888	18756
																	-5	14	33	7	11484	21084

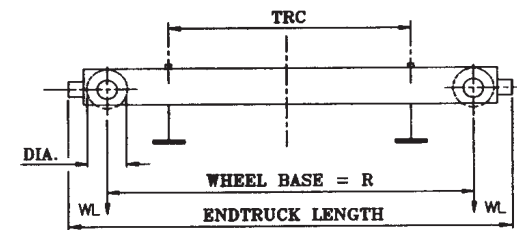
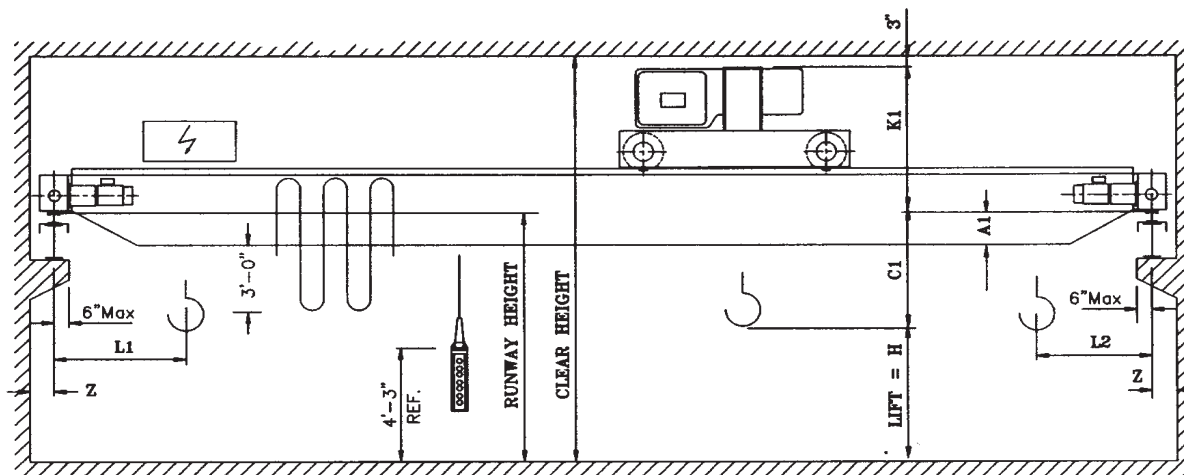


- Notes:
1. Runway electrification is standard on left side.
 2. Wheel loads do not include impact.
 3. Shipping weights include hoist and trolley.

WHEEL LOADS INDICATED WITHOUT IMPACT OR WALKWAY

Double Girder Crane Type ZLW2

Cap. Tons	Hoist			Trolley			Endtruck				Bridge							Wheel Load Lbs.	Shipping Weight Lbs.
	Type Reeving Rope Dia.	Speed FPM HP	Lift Ft.	Type Weight	HP per Motor 80 FPM VFD	TRC In.	Wheel		Length Ft.-In.	HP per Motor 120 FPM VFD	Span Ft.	L1 In.	L2 In.	C1 In.	A1 In.	K1 In.	Z In.		
							Dia. In.	Base Ft.-In.											
7.5	2063 4/1 0.4	17/2.8 8.8/1.3	20	EM2063L6 171.41.060 1400 lbs.	2 x 0.5	78.75	8	9'-6"	11'-2"	2x1.00	24	34	34	-4	4	33	7	10766	7139
											28	34	34	-4	6	33		11136	8124
											32	34	34	-4	8	33		11544	9395
											36	34	34	-4	8	33		11988	10921
											40	34	34	-4	8	33		12486	12701
											44	34	34	-4	11	33		12988	14941
	48	34	34	-4	11	33	13924	18075											
	52	35	35	-6	14	35	14266	19278											
	56	35	35	-6	14	35	14996	22347											
	60	35	35	-6	14	35	15422	23683											
				30	EM2063L6 171.41.100 1445 lbs.														

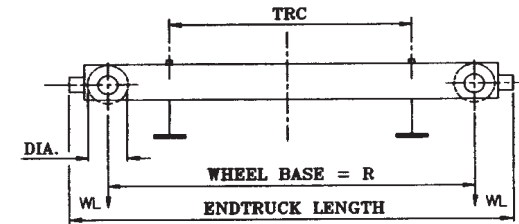
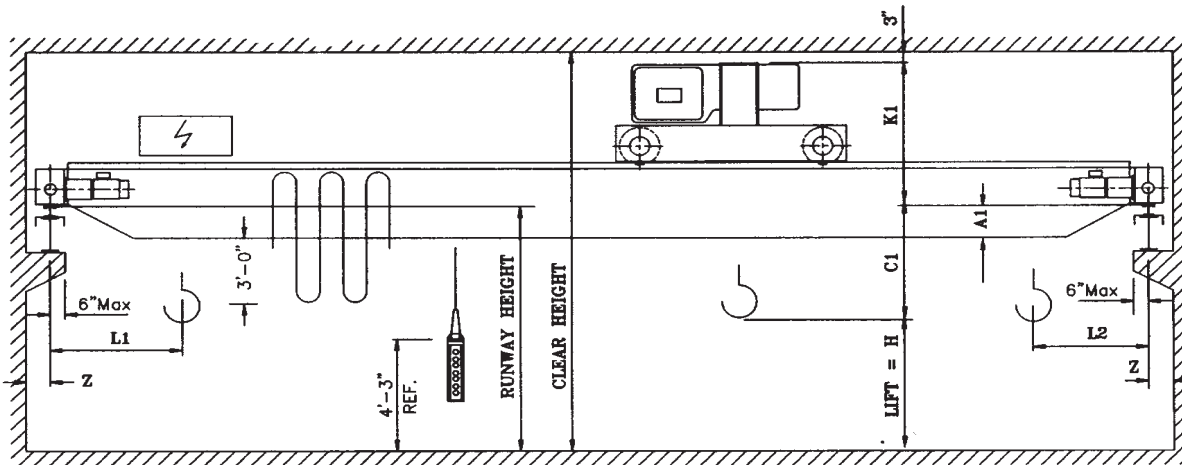


- Notes:
1. Runway electrification is standard on left side.
 2. Wheel loads do not include impact.
 3. Shipping weights include hoist and trolley.

WHEEL LOADS INDICATED WITHOUT IMPACT OR WALKWAY

Double Girder Crane Type ZLW3

Cap. Tons	Hoist			Trolley			Endtruck				Bridge							Wheel Load Lbs.	Shipping Weight Lbs.
	Type	Speed	Lift	Type	HP per Motor	TRC	Wheel		Length	HP per Motor	Span	L1	L2	C1	A1	K1	Z		
	Reeving Rope Dia.	FPM HP	Ft.	Weight	80 FPM VFD	In.	Dia. In.	Base Ft.-In.											
10	3100 4/1 0.500	16/2.6 16.0/2.5	20	EM3100L6 162.41.060 2150 lbs.	2 x 0.5	78.75	8	9'-6"	11'-2"	2x1.0	24	38	38	-2	6	36	7	10934	8703
											28			-2	8	36		11456	9895
											32			-2	8	36		11992	11332
											36			-2	8	36		12634	13320
											40			-4	8	38		13206	15133
	44	-4	8	38	13826	17208													
	48	-4	11	38	14600	19295													
	52	-6	11	38	15402	22231													
	56	-6	14	38	16260	25342													
	60	-6	14	38	17214	28926													
			33	EM3100L6 162.41.100 2200 lbs.						24	38	38	-2	6	36	7	10934	8703	
										28			-2	8	36		11456	9895	
										32			-2	8	36		11992	11332	
										36			-2	8	36		12634	13320	
										40			-4	8	38		13206	15133	



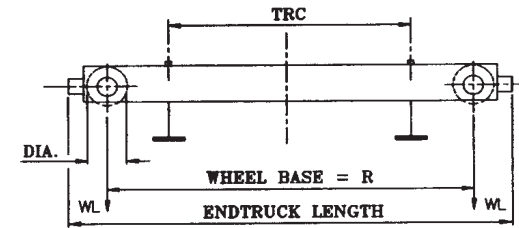
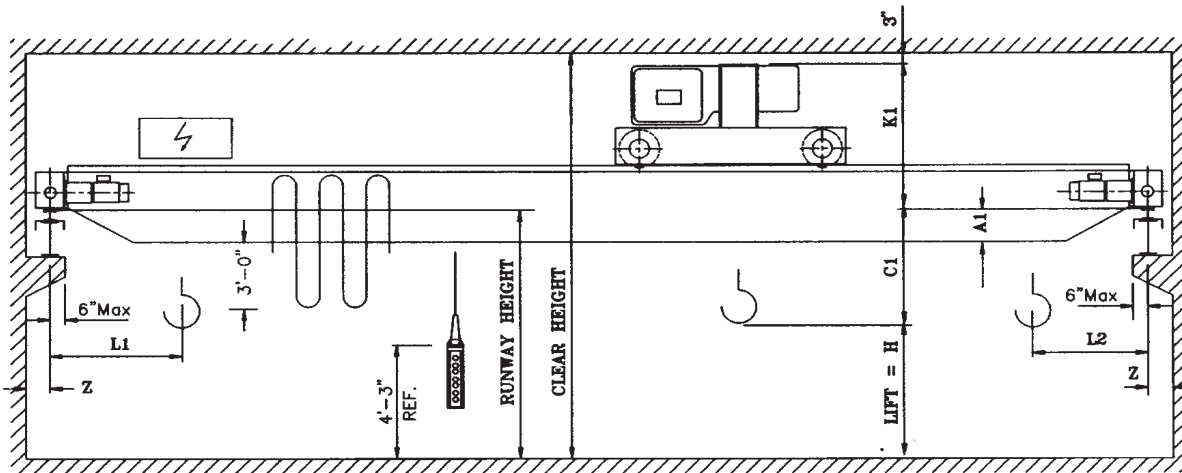
- Notes:
1. Runway electrification is standard on left side.
 2. Wheel loads do not include impact.
 3. Shipping weights include hoist and trolley.

WHEEL LOADS INDICATED WITHOUT IMPACT OR WALKWAY

Double Girder Crane Type ZLW4

Cap. Tons	Hoist			Trolley			Endtruck				Bridge							Wheel Load Lbs.	Shipping Weight Lbs.
	Type Reeving Rope Dia.	Speed FPM HP	Lift Ft.	Type Weight	HP per Motor 80 FPM VFD	TRC In.*	Wheel		Length Ft.-In.	HP per Motor 120 FPM VFD	Span Ft.	L1 In.	L2 In.	C1 In.	A1 In.	K1 In.	Z In.		
							Dia. In.	Base Ft.-In.											
15	3136 4/1 0.5	16.2/2.6 16.0/2.5	20	EM 3136L6 161.41.060 2150 lbs.	2 x 0.75	78.75*	10	9'-6"	11'-2"	2x1.0	24	38	38	1	6	43	7	15966	11416
			28	1							6			43	7	16824	13443		
			32	1							8			43	7	17668	15319		
			36	1							8			43	7	18244	15679		
			40	1							10			43	7	18912	17075		
			44	-2							10			46	8	19574	19169		
			48	-2							10			46	8	20548	21885		
			52	-2							10			46	8	21886	26305		
			56	-2							12			46	8	22916	29632		
			60	-2							15			46	8	23614	32959		

* For 50 ft. lift, minimum TRC =98.50 in.



Notes:

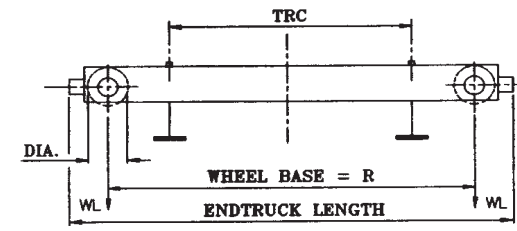
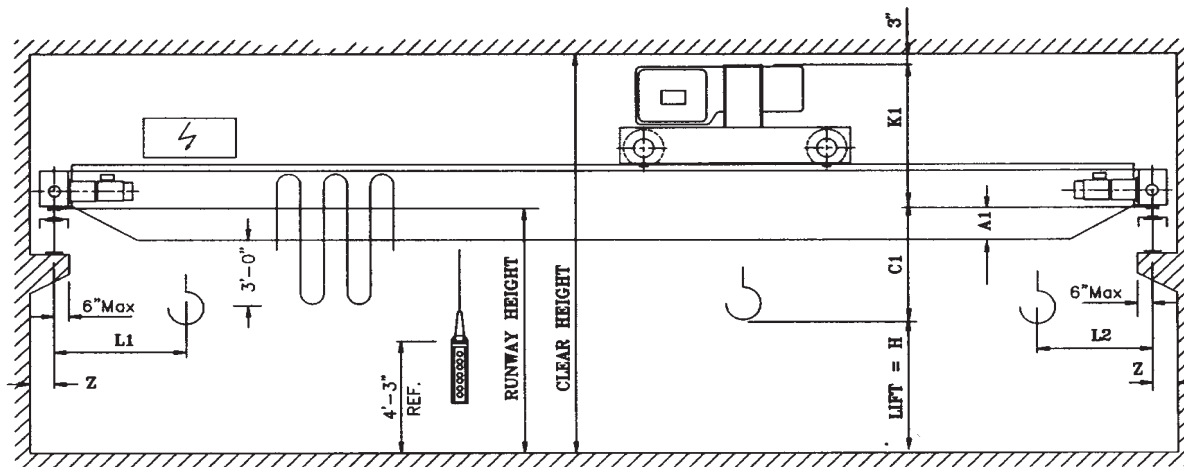
1. Runway electrification is standard on left side.
2. Wheel loads do not include impact.
3. Shipping weights include hoist and trolley.

WHEEL LOADS INDICATED WITHOUT IMPACT OR WALKWAY

Double Girder Crane Type ZLW5

Cap. Tons	Hoist			Trolley			Endtruck				Bridge						Wheel Load Lbs.	Shipping Weight Lbs.			
	Type Reeving Rope Dia.	Speed FPM HP	Lift Ft.	Type Weight	HP per Motor 80 FPM VFD	TRC In.*	Wheel		Length Ft.-In.	HP per Motor 120 FPM VFD	Span Ft.	L1 In.	L2 In.	C1 In.	A1 In.	K1 In.			Z In.		
							Dia. In.	Base Ft.-In.													
20	3188 6/1 0.5	10.5/1.6 25.2/3.9	13	EM 3188L6	2 x 0.5	78.75*	10	9'-6"	11'-2"	2x1.0	38	38	-3	47	8			4	21352	13304	
			22	101.61.040 2500 lbs.														6	22168	15070	
			33*	EM 3188L6														6	22964	16390	
				101.61.060 2728 lbs.														6	23176	18318	
				EM 3188L6														10	24568	20794	
				101.61.100 2992 lbs.														10	24988	23694	
																			12	25948	26707
																			12	26896	30243
																			14	27928	34841
																			16	29422	36807

* For 33 ft. lift, minimum TRC =98.50 in.



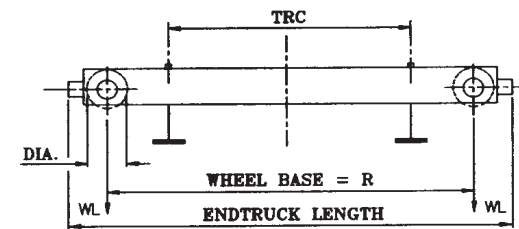
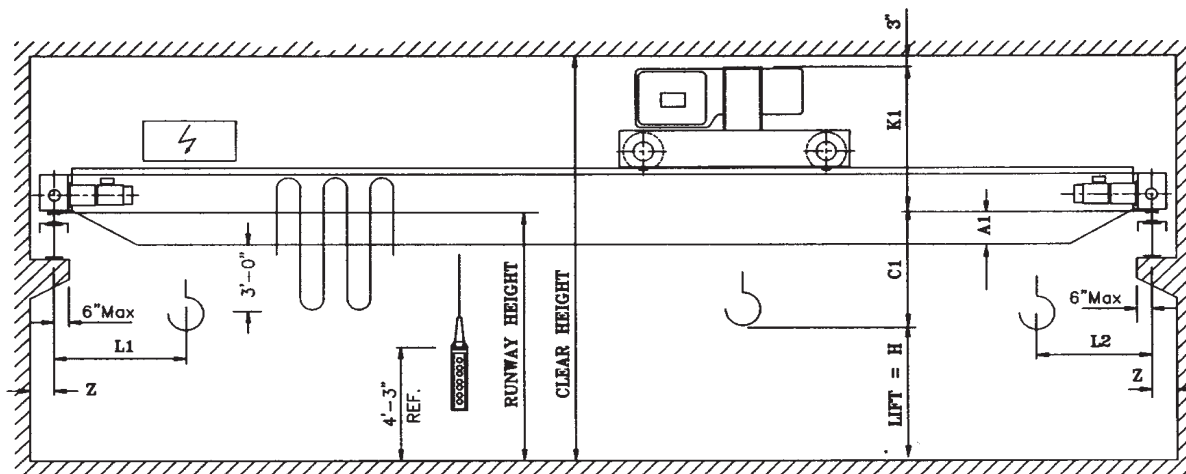
- Notes:
1. Runway electrification is standard on left side.
 2. Wheel loads do not include impact.
 3. Shipping weights include hoist and trolley.

WHEEL LOADS INDICATED WITHOUT IMPACT OR WALKWAY

Double Girder Crane Type ZLW6

Cap. Tons	Hoist			Trolley			Endtruck				Bridge							Wheel Load Lbs.	Shipping Weight Lbs.	
	Type Reeving Rope Dia.	Speed FPM HP	Lift Ft.	Type Weight	HP per Motor 80 FPM VFD	TRC In.*	Wheel		Length Ft.-In.	HP per Motor 120 FPM VFD	Span Ft.	L1 In.	L2 In.	C1 In.	A1 In.	K1 In.	Z In.			
							Dia. In.	Base Ft.-In.												
25	6250 4/1 0.625	14/2.3 24.2/3.9	22	EM 6250L6	2 x 0.75	78.75*	12	9'-6"	11'-10"	2x2.0	42	42	7	55	8			24	25687	16704
			33	141.41.060 2900 lbs.														28	26688	19136
			50*	EM 6250L6														32	27564	20976
			141.41.100 3300 lbs.	36														28514	23327	
			40	29462														26086		
	44	31136	30287																	
	48	32182	34143																	
	52	32816	36055																	
	56	34364	41654																	
	60	34998	43829																	

* For 50 ft. lift, minimum TRC =98.50 in.



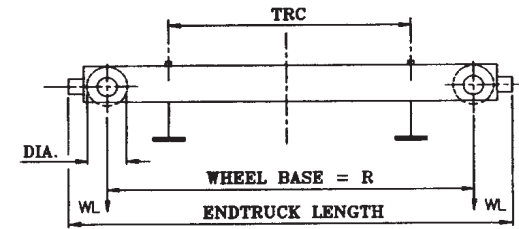
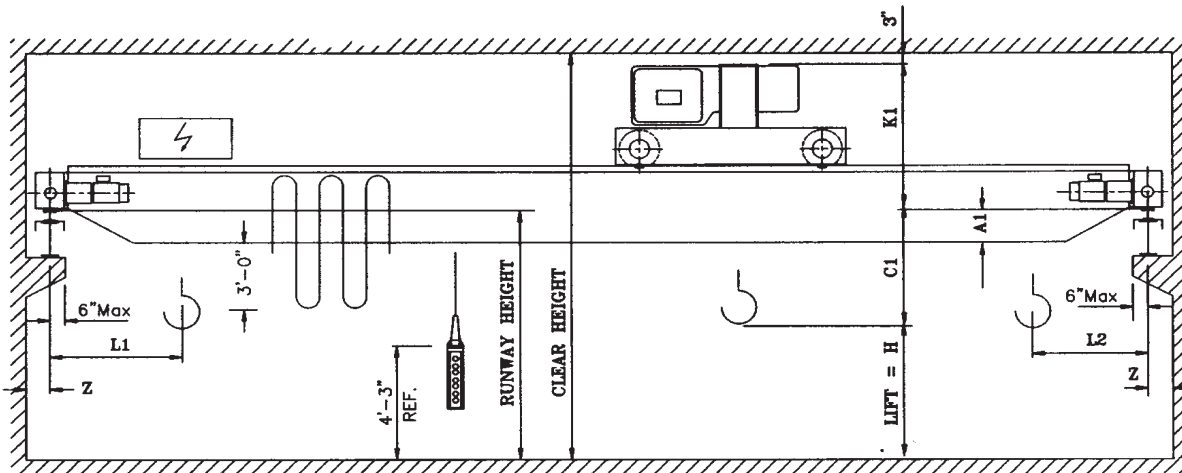
- Notes:
1. Runway electrification is standard on left side.
 2. Wheel loads do not include impact.
 3. Shipping weights include hoist and trolley.

WHEEL LOADS INDICATED WITHOUT IMPACT OR WALKWAY

Double Girder Crane Type ZLW7

Cap. Tons	Hoist			Trolley			Endtruck			Bridge								Wheel Load Lbs.	Shipping Weight Lbs.
	Type Reeving Rope Dia.	Speed FPM HP	Lift Ft.	Type Weight	HP per Motor 80 FPM VFD	TRC In.*	Wheel		HP per Motor 120 FPM VFD	Span Ft.	L1 In.	L2 In.	C1 In.	A1 In.	K1 In.	Z In.			
							Dia. In.	Base Ft.-In.									Length Ft.-In.		
30	5300 6/1 0.625	9.0/1.5 24.2/3.9	13	EM 5300L6	2 x 0.75	78.75*	16	9'-6"	12'-2"	2x3.0	46	46	8	6	4	56	30946	18118	
			22	091.61.040 4450 lbs.										28	6	4	56	32228	19894
			33*	EM 6320L6										32	6	4	56	33168	21141
			EM 6320L6	36										6	8	56	34564	24786	
			EM 6320L6	40										6	14	56	35948	28765	
			EM 6320L6	44										6	14	56	36728	30524	
			EM 6320L6	48										6	14	56	37968	34405	
			EM 6320L6	52										3	16	59	39528	39764	
			EM 6320L6	56										3	19	59	40918	44159	
			EM 6320L6	60										3	19	59	42256	49187	

* For 33 ft. lift, minimum TRC =98.50 in.



Notes:

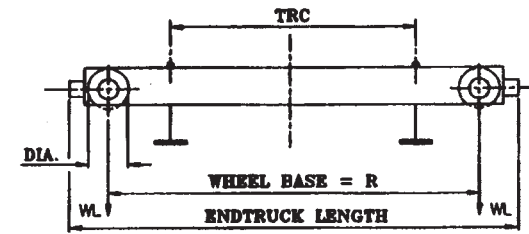
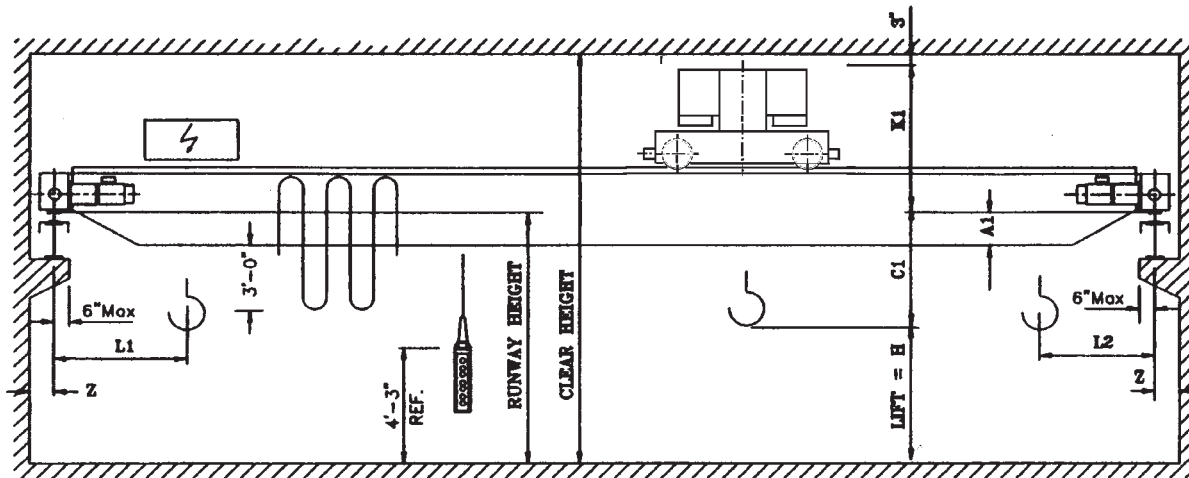
1. Runway electrification is standard on left side.
2. Wheel loads do not include impact.
3. Shipping weights include hoist and trolley.

WHEEL LOADS INDICATED WITHOUT IMPACT OR WALKWAY

Double Girder Crane Type ZLW8

Cap. Tons	Hoist			Trolley			Endtruck				Bridge						Wheel Load Lbs.	Shipping Weight Lbs.													
	Type Reeving Rope Dia.	Speed FPM HP	Lift Ft.	Type Weight	HP per Motor 80 FPM VFD	TRC In.*	Wheel		Length Ft.-In.	HP per Motor 120 FPM VFD	Span Ft.	L1 In.	L2 In.	C1 In.	A1 In.	K1 In.			Z In.												
							Dia. In.	Base Ft.-In.																							
35	6360 6/1 0.75	9.0/1.5 24.2/3.9	13	EM 6360L6	2 x 0.75	78.75*	16	10'-6"	13'-2"	2x3.0	24	46	46	3	63	8	4	34968	18118												
				091.61.040													4	36466	19894												
				4750 lbs.													8	37996	23273												
			22	EM 6360L6													2 x 0.75	78.75*	16	10'-6"	13'-2"	2x3.0	24	46	46	3	63	8	8	38974	24786
				091.61.060																									40	40228	27850
				5168 lbs.																									44	41734	32469
	33*	6360 6/1 0.75	24.2/3.9	33*	EM 6320L6	2 x 0.75	78.75*	20	10'-6"	13'-6"	2x5.0	48	46	46	3	63	8	13	43292	37565											
					091.61.100													52	44486	41803											
					7612 lbs.													56	46740	45210											
																		60	49360	48840											

* For 33 ft. lift, minimum TRC =98.50 in.



- Notes:
1. Runway electrification is standard on left side.
 2. Wheel loads do not include impact.
 3. Shipping weights include hoist and trolley.

WHEEL LOADS INDICATED WITHOUT IMPACT OR WALKWAY

Double Girder Crane Type ZLW9

Cap. Tons	Hoist			Trolley			Endtruck				Bridge							Wheel Load Lbs.	Shipping Weight Lbs.													
	Type Reeving Rope Dia.	Speed FPM HP	Lift Ft.	Type Weight	HP per Motor 80 FPM VFD	TRC In.*	Wheel		HP per Motor 120 FPM VFD	Span Ft.	L1 In.	L2 In.	C1 In.	A1 In.	K1 In.	Z In.																
							Dia. In.	Base Ft.-In.									Length Ft.-In.															
40	6360 6/1 0.75	9.0/1.5 30.3/4.2	13	EM 6360L6 161.61.040 4750 lbs.	2 x 0.75	78.75*	20	10'-6"	13'-6"	2x1.8/.40	48	48	4	8	65	8	24	38946	21037													
			22	EM 6400L6 161.82.100 5168 lbs.													28	40498	22841													
			33*	EM 6400L6 161.82.150 7612 lbs.													32	42216	26247													
				36													43640	28932														
				40													44798	31795														
				44													45964	36462														
																														48	47260	38966