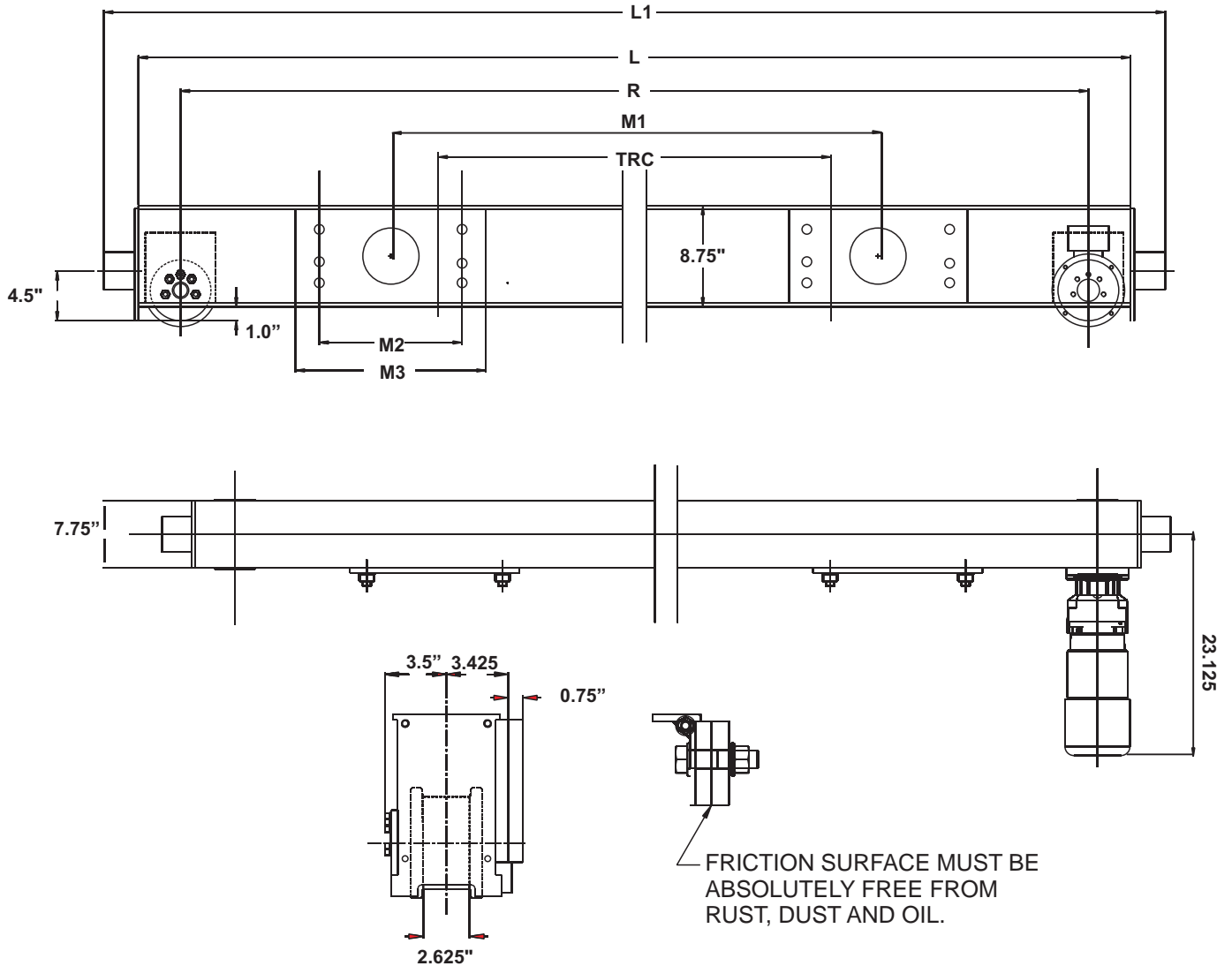
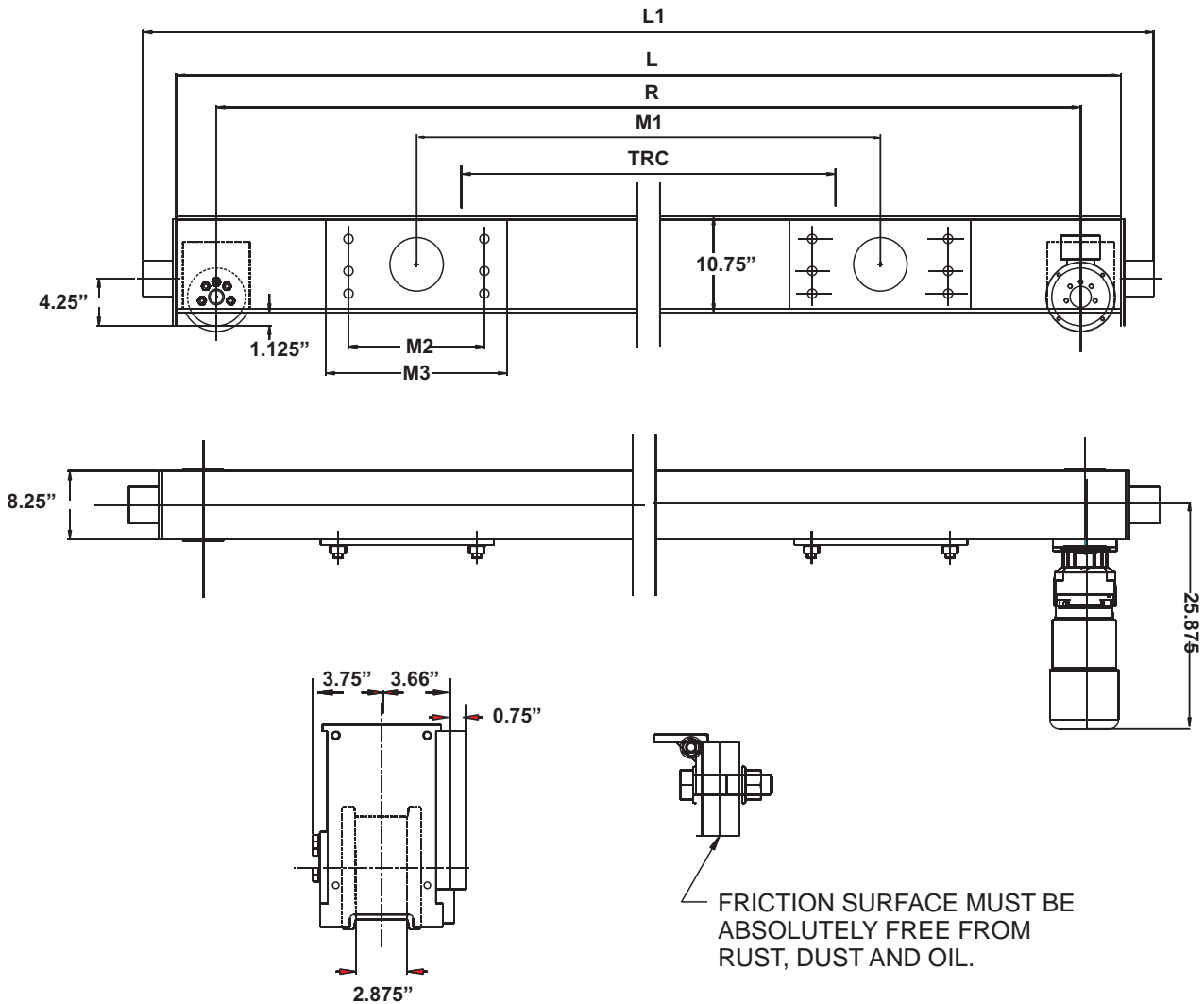


Specifications for EMH Style HSZ130 Top Running Double Girder Endtrucks 5 in. Diameter Wheels



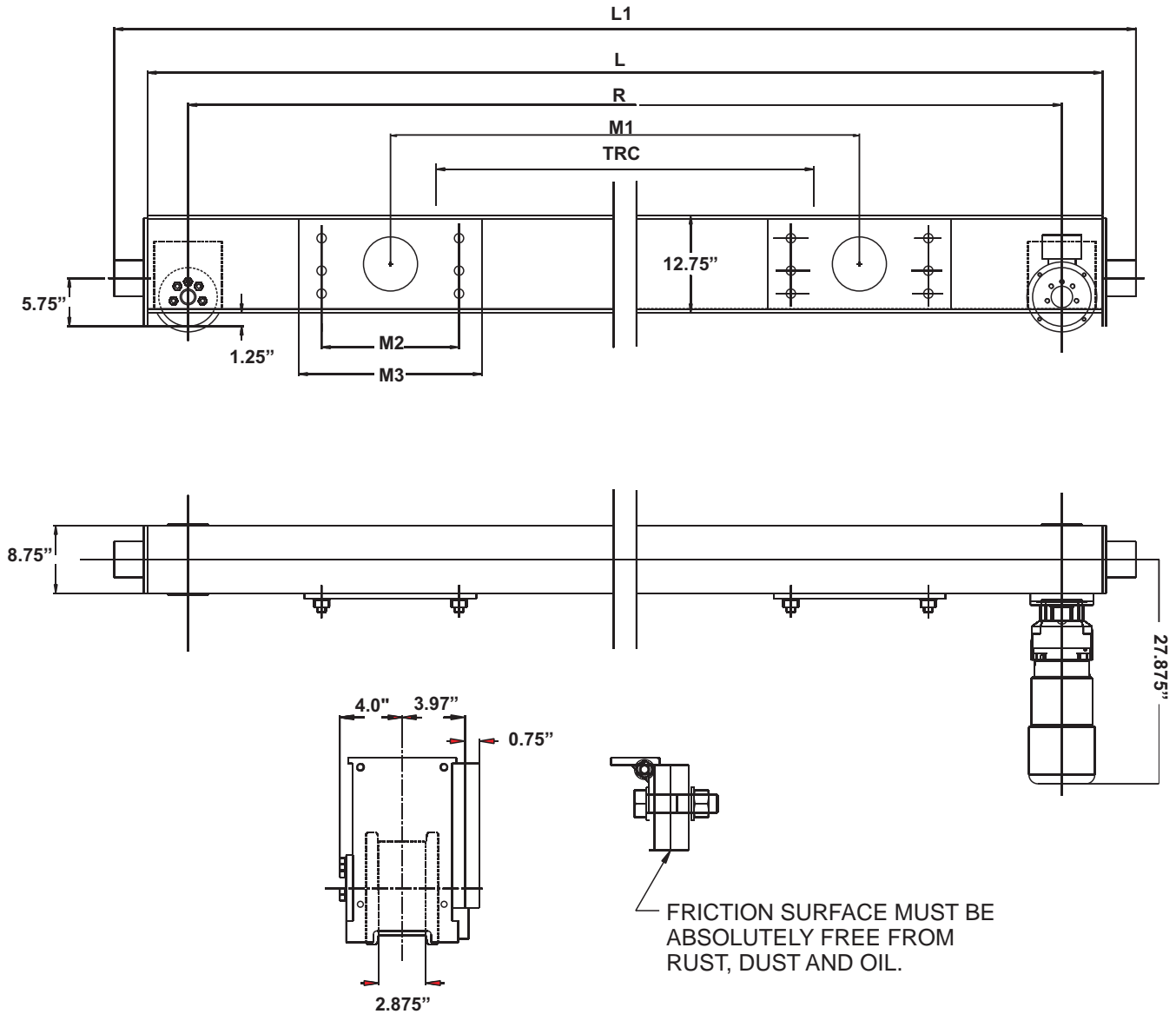
Model No.	Wheel Load	Moving Mass Lbs.	120 fpm Motor HP	Wheel Base (R) Ft.-In	L Ft.-In.	L1 Ft.-In.	M1 In.	M2 In.	M3 In.	TRC In.	Weight per Pair
HSZ-130.224.2700	11,240	24,000	2 x 0.75	8-10	9-6	10-0	71	12	16	63	900
HSZ-130.224.2900	11,240	24,000	2 x 0.75	9-6	10-2	10-8	75	16	20	63	1080
HSZ-130.224.3200	11,240	24,000	2 x 0.75	10-6	11-2	11-8	75	16	20	63	1140
HSZ-130.224.3800	11,240	24,000	2 x 0.75	12-6	13-2	13-8	94.75	20	24	78.75	1610
HSZ-130.224.4600	9,100	24,000	2 x 0.75	15-0	15-8	16-2	114.5	20	24	98.5	1830

Specifications for EMH Style HSZ160 Top Running Double Girder Endtrucks 6.25 in. Diameter Wheels



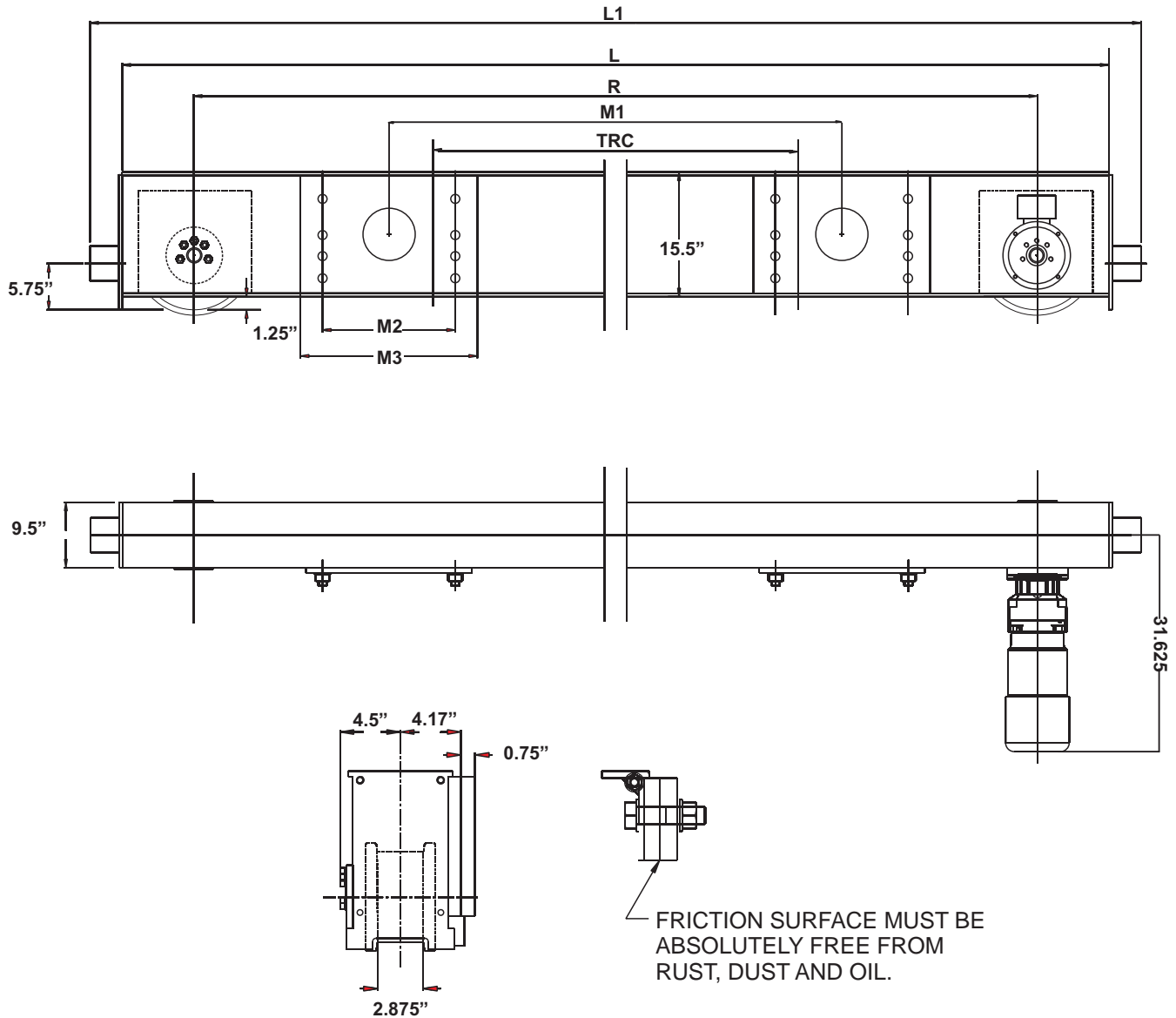
Model No.	Wheel Load	Moving Mass Lbs.	120 fpm Motor HP	Wheel Base (R) Ft.-In.	L Ft.-In.	L1 Ft.-In.	M1 In.	M2 In.	M3 In.	TRC In.	Weight per Pair
HSZ-160.274.2700	16,410	35,200	2 x 1.0	8-10	9-7	10-1	71	12	16	63	1352
HSZ-160.274.2900	16,410	35,200	2 x 1.0	9-6	10-3	10-9	75	16	20	63	1452
HSZ-160.274.3200	16,410	35,200	2 x 1.0	10-6	11-3	11-9	75	16	20	63	1592
HSZ-160.274.3800	16,410	35,200	2 x 1.0	12-6	13-3	13-9	94.75	20	24	78.75	1972
HSZ-160.224.4600	15,140	35,200	2 x 1.0	15-0	15-9	16-3	114.5	20	24	98.5	2232

Specifications for EMH Style HSZ200 Top Running Double Girder Endtrucks 8 in. Diameter Wheels



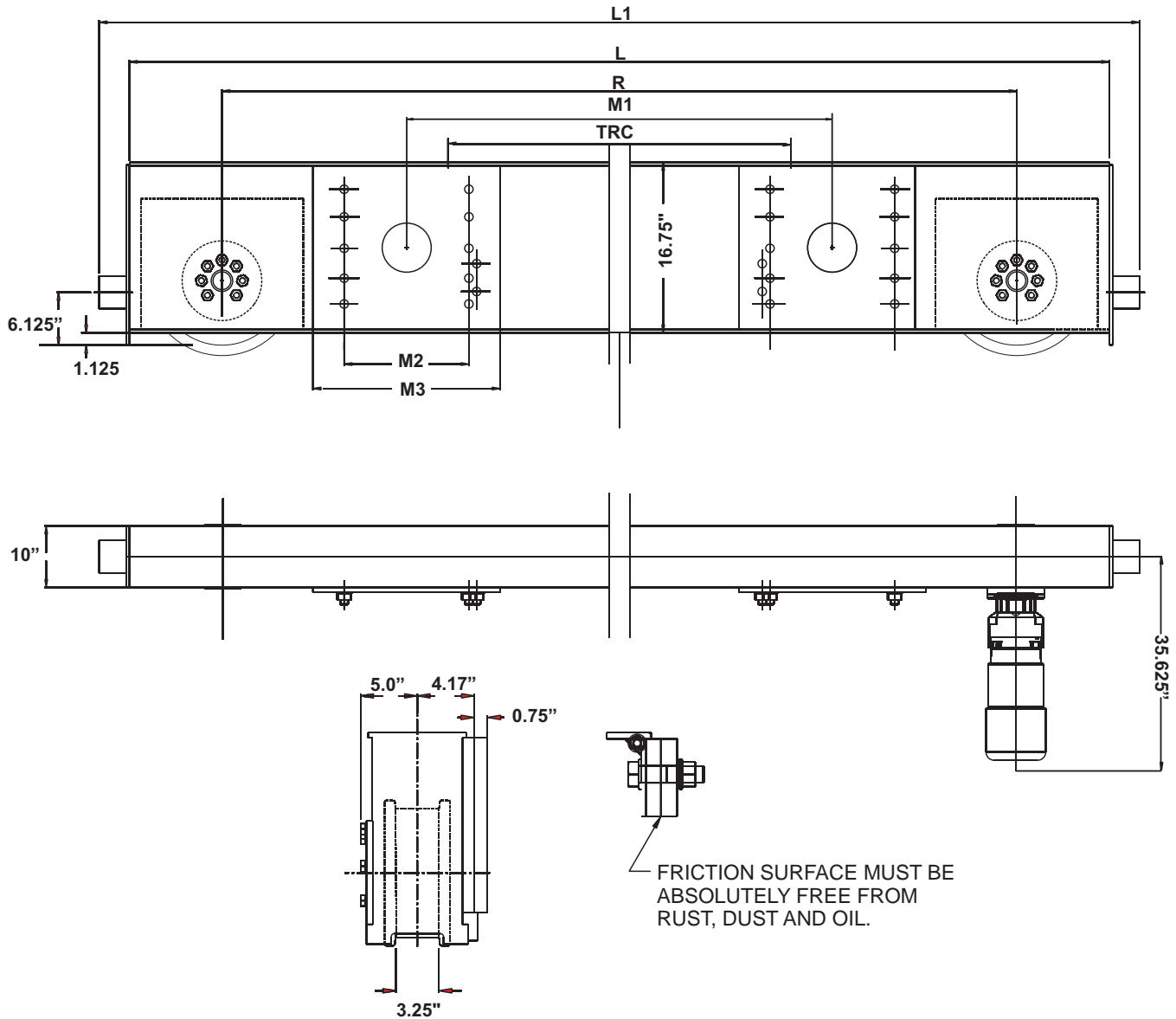
Model No.	Wheel Load	Moving Mass Lbs.	120 fpm Motor HP	Wheel Base (R) Ft.-In.	L Ft.-In.	L1 Ft.-In.	M1 In.	M2 In.	M3 In.	TRC In.	Weight per Pair
HSZ-200.324.2700	25,170	63,000	2 x 1.5	8-10	9-9	10-5	71	12	16	63	1,600
HSZ-200.324.2900	25,170	63,000	2 x 1.5	9-6	10-5	10-11	75	16	20	63	1,790
HSZ-200.324.3200	25,170	63,000	2 x 1.5	10-6	11-5	11-11	75	16	20	63	1,800
HSZ-200.324.3800	25,170	63,000	2 x 1.5	12-6	12-5	13-11	94.75	20	24	78.75	2,200
HSZ-200.324.4600	19,760	63,000	2 x 1.5	15-0	15-11	16-5	114.5	20	24	98.5	2,470

Specifications for EMH Style HSZ250 Top Running Double Girder Endtrucks 10 in. Diameter Wheels



Model No.	Wheel Load	Moving Mass Lbs.	120 fpm Motor HP	Wheel Base (R) Ft.-In.	L Ft.-In.	L1 Ft.-In.	M1 In.	M2 In.	M3 In.	TRC In.	Weight per Pair
HSZ-250.395.2700	38,210	93,500	2 x 2.0	8-10	9-10	10-6	71	12	16	63	2,140
HSZ-250.395.2900	38,210	93,500	2 x 2.0	9-6	10-6	11-2	75	16	20	63	2,260
HSZ-250.395.3200	38,210	93,500	2 x 2.0	10-6	11-6	12-2	79	20	24	63	2,520
HSZ-250.395.3800	38,210	93,500	2 x 2.0	12-6	13-6	14-2	94.75	20	24	78.75	2,990
HSZ-250.395.4600	33,560	93,500	2 x 2.0	15-0	16-0	16-8	114.5	24	29	98.5	3,320

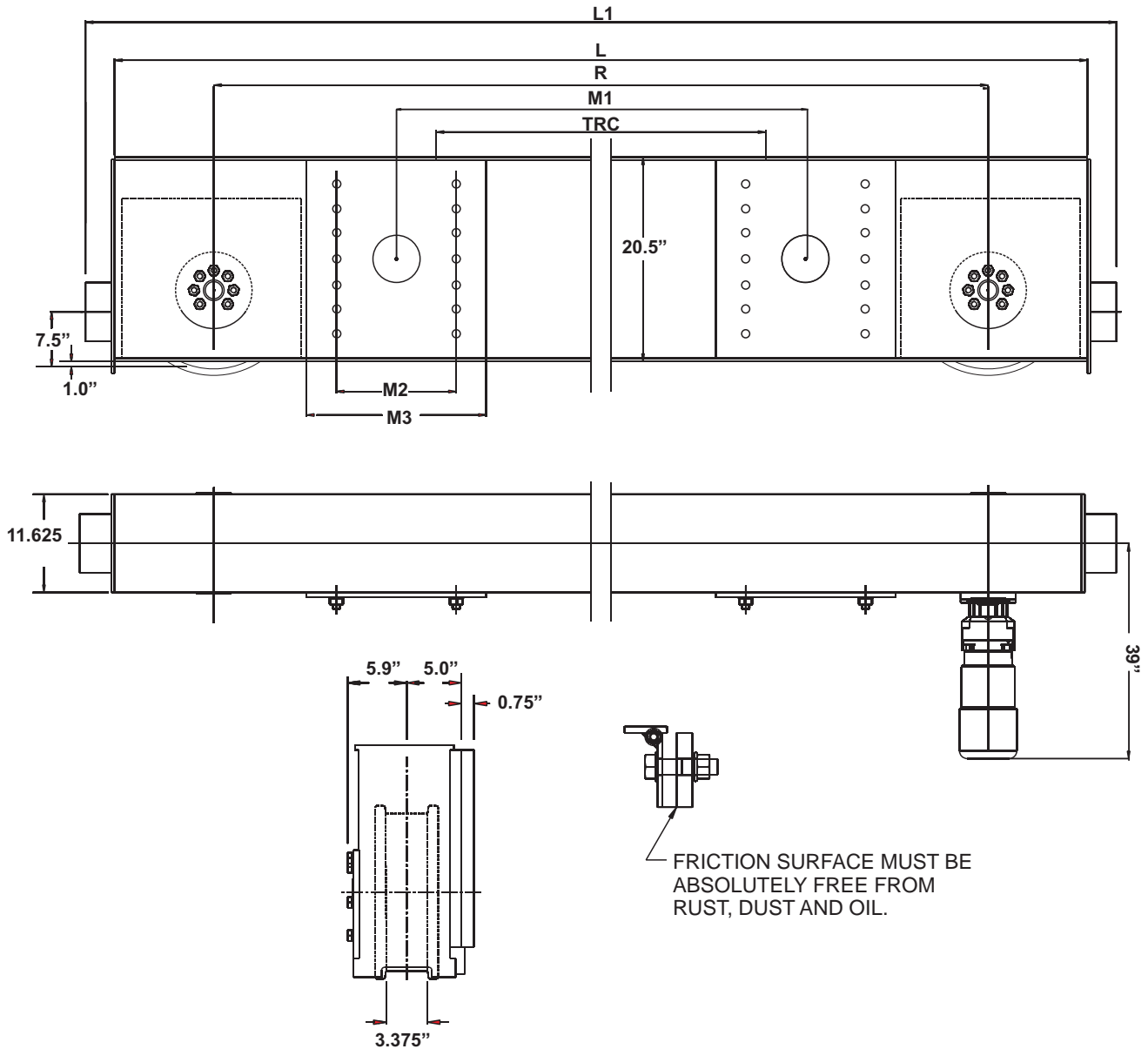
Specifications for EMH Style HSZ315 Top Running Double Girder Endtrucks 12 in. Diameter Wheels



FRICITION SURFACE MUST BE ABSOLUTELY FREE FROM RUST, DUST AND OIL.

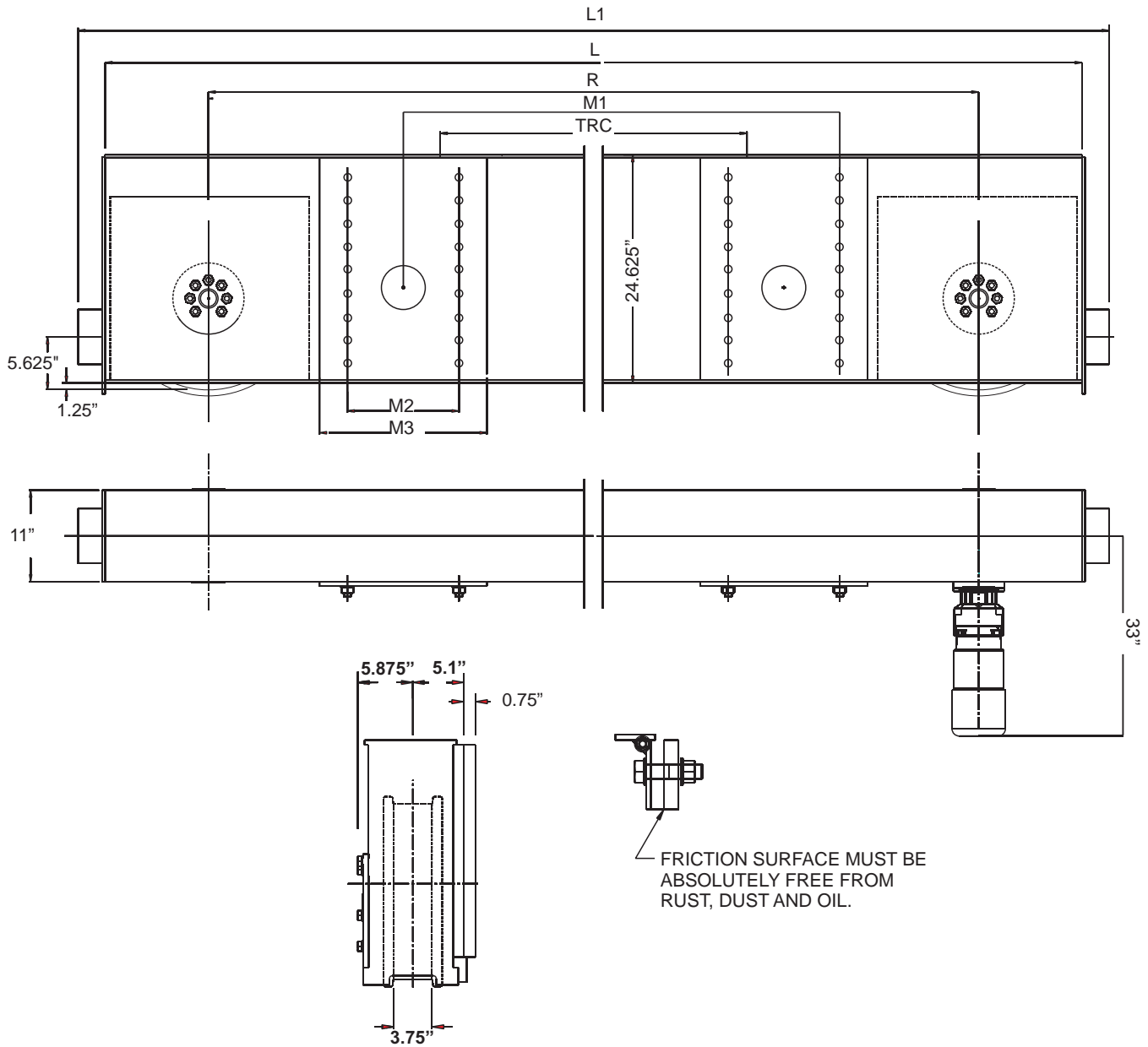
Model No.	Wheel Load	Moving Mass Lbs.	120 fpm Motor HP	Wheel Base (R) Ft.-In.	L Ft.-In.	L1 Ft.-In.	M1 In.	M2 In.	M3 In.	TRC In.	Weight per Pair
HSZ-315.425.2700	48,550	140,000	2 x 3.0	8-10	10-2	10-11	71	12	17.5	63	2,720
HSZ-315.425.2900	48,550	140,000	2 x 3.0	9-6	10-10	11-7	75	16	21.25	63	3,020
HSZ-315.425.3200	48,550	140,000	2 x 3.0	10-6	11-10	12-7	79	20	25.25	63	3,380
HSZ-315.425.3800	48,550	140,000	2 x 3.0	12-6	13-10	14-7	94.75	20	25.25	78.75	3,660
HSZ-315.425.4100	48,550	140,000	2 x 3.0	13-6	14-10	15-7	114.25	20	25.25	98.5	3,800
HSZ-315.425.4600	48,840	140,000	2 x 3.0	15-0	16-4	17-1	118.5	24	29.25	98.5	4,040

Specifications for EMH Style HSZ400 Top Running Double Girder Endtrucks 16 in. Diameter Wheels



Model No.	Wheel Load	Moving Mass Lbs.	120 fpm Motor HP	Wheel Base (R) Ft.-In.	L Ft.-In.	L1 Ft.-In.	M1 In.	M2 In.	M3 In.	TRC In.	Weight per Pair
HSZ-400.524.2900	58,450	200,000	2 x 5.0	9-6	11-2	12-0	75	16	21.25	63	4,645
HSZ-400.524.3200	58,450	200,000	2 x 5.0	10-6	12-2	13-0	79	20	25.25	63	4,850
HSZ-400.524.3800	58,450	200,000	2 x 5.0	12-6	14-2	15-0	94.75	20	25.25	78.75	5,180
HSZ-400.524.4100	58,450	200,000	2 x 5.0	13-6	15-2	16-0	114.25	20	25.25	98.5	5,340
HSZ-400.524.4600	58,450	200,000	2 x 5.0	15-0	16-8	17-6	118.25	24	29.25	98.5	5,840

Specifications for EMH Style HSZ500 Top Running Double Girder Endtrucks 20 in. Diameter Wheels



Model No.	Wheel Load	Moving Mass Lbs.	120 fpm Motor HP	Wheel Base (R) Ft.-In.	L Ft.-In.	L1 Ft.-In.	M1 In.	M2 In.	M3 In.	TRC In.	Weight per Pair
HSZ-500.625.3200	76,430	290,000	2 x 7.5	10-6	12-7	13-4	79	20	25.25	63	7,000
HSZ-500.625.3800	76,430	290,000	2 x 7.5	12-6	14-7	15-4	94.75	20	25.25	78.75	7,420
HSZ-500.625.4100	76,430	290,000	2 x 7.5	13-6	15-7	16-4	114.5	20	25.25	98.5	7,780
HSZ-500.625.4600	76,430	290,000	2 x 7.5	15-0	17-1	17-10	118.5	24	25.25	98.5	8,200