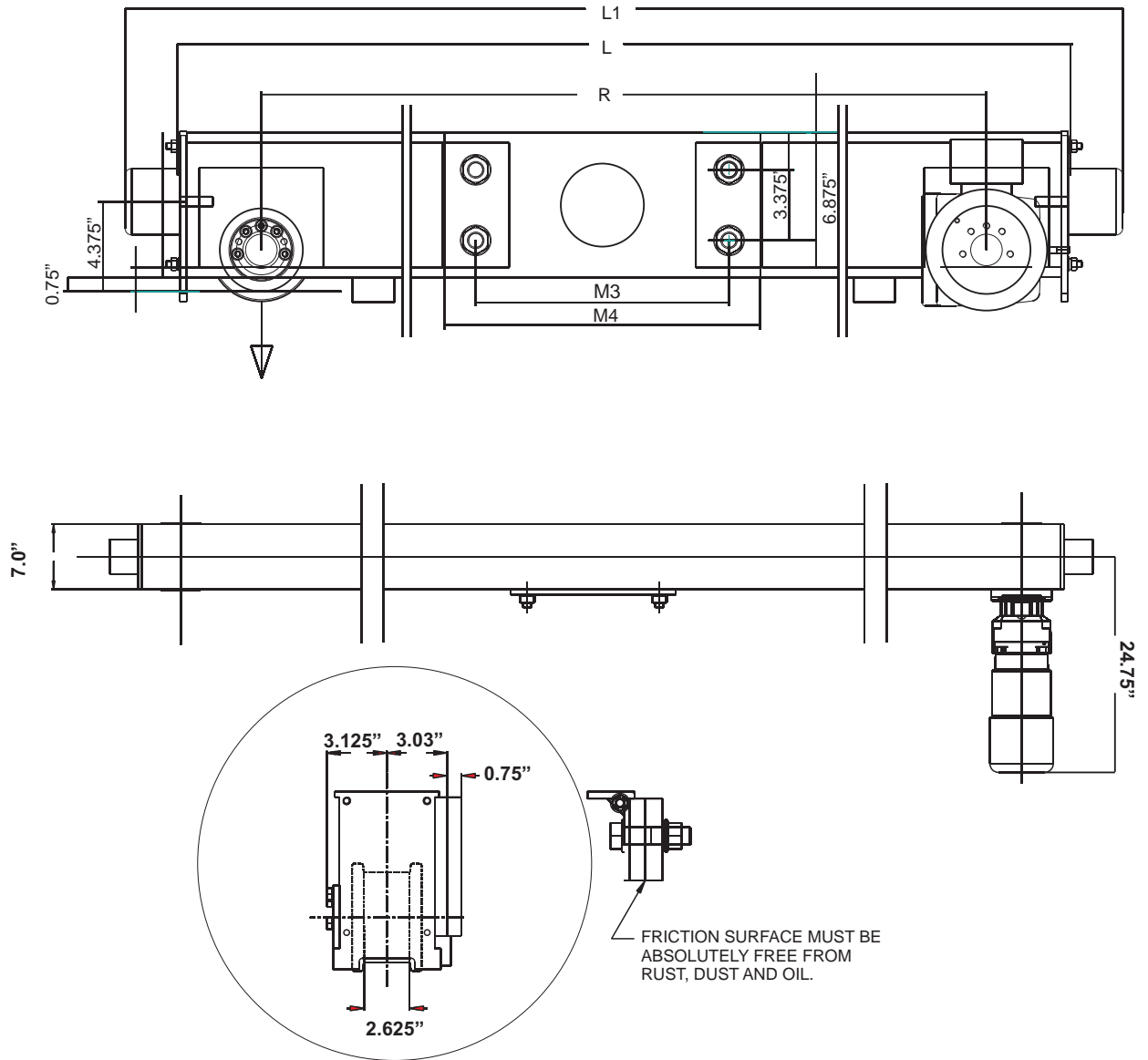
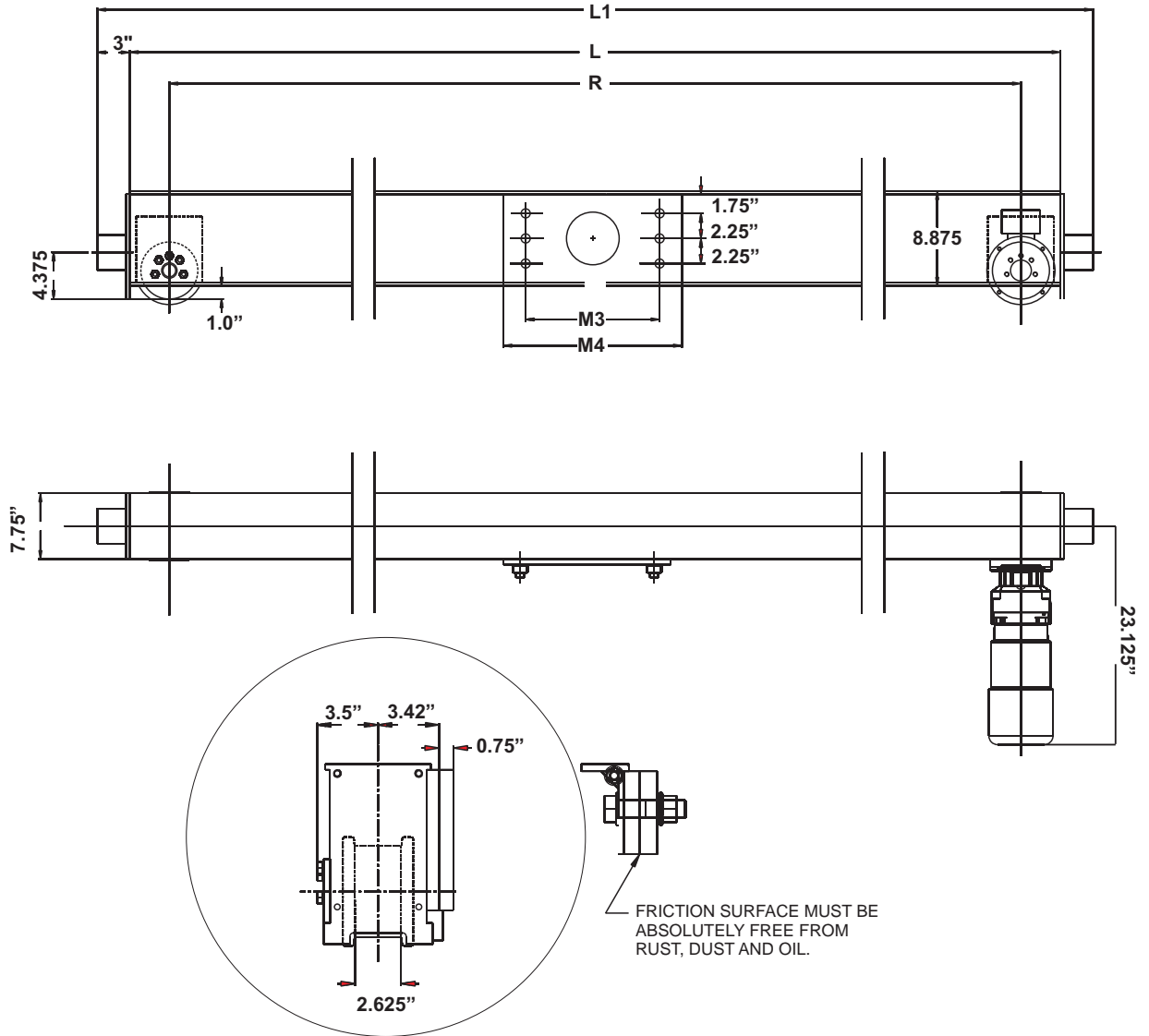


# Specifications for EMH Style HSE100 Top Running Single Girder Endtrucks 4in. Diameter Wheels



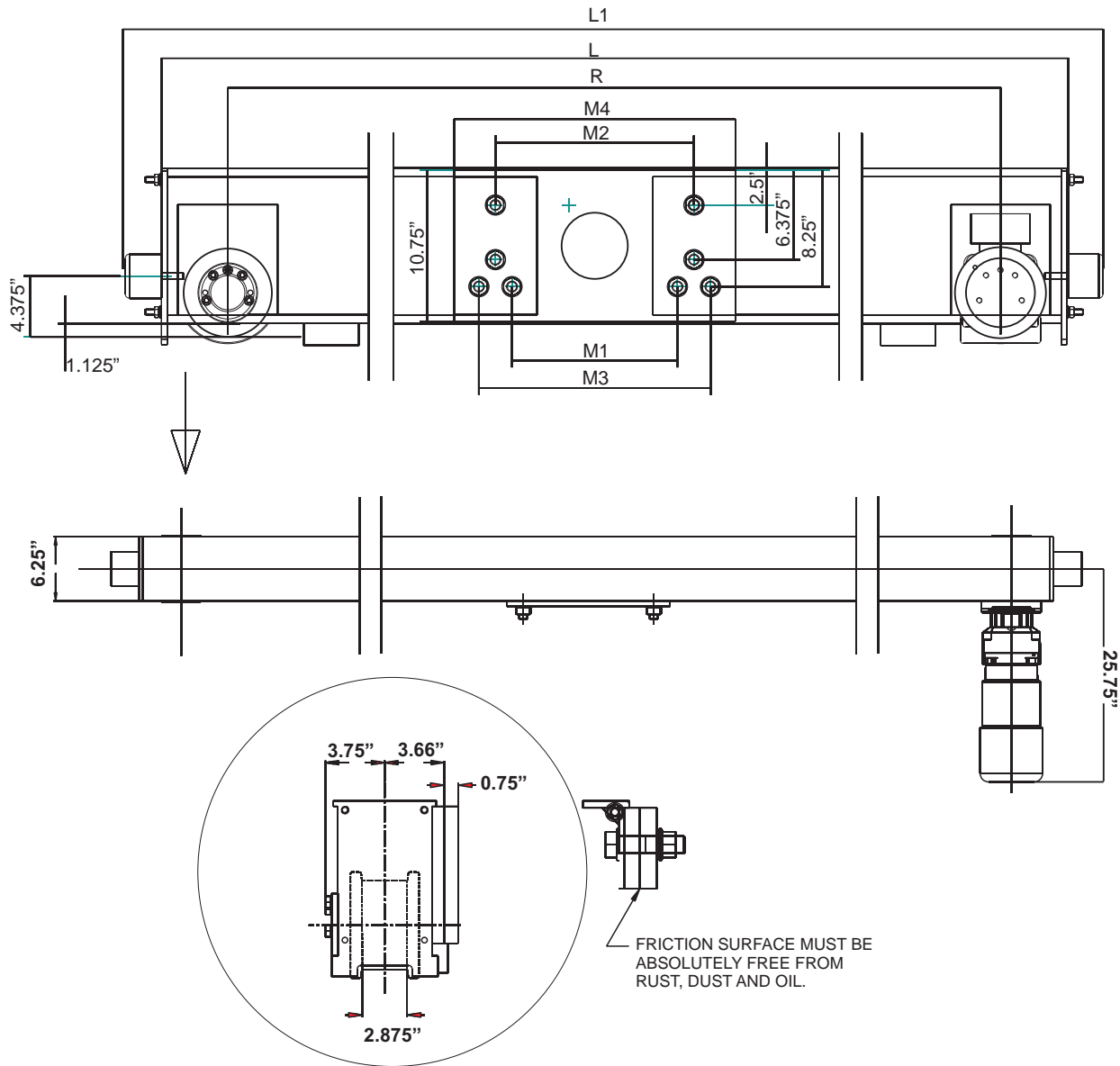
Model No.	Wheel Load	Moving Mass Lbs.	120 fpm Motor HP	Wheel Base (R) Ft.-In.	L Ft.-In.	L1 Ft.-In.	M3 In.	M4 In.	Weight per Pair
HSE-100.174.900	7,190	24,000	2 x 0.75	3-0	3-7	4-1	12	15	492
HSE-100.174.1500	7,190	24,000	2 x 0.75	5-0	5-7	6-1	12	15	472
HSE-100.174.1900	7,190	24,000	2 x 0.75	6-3	6-10	7-4	12	15	572
HSE-100.174.2200	7,190	24,000	2 x 0.75	7-3	7-10	8-4	12	15	662
HSE-100.174.2700	6,700	24,000	2 x 0.75	8-10	9-5	9-11	12	15	812
HSE-100.174.3200	4,790	24,000	2 x 0.75	10-6	11-1	11-7	12	15	922

# Specifications for EMH Style HSE130 Top Running Single Girder Endtrucks 5 in. Diameter Wheels



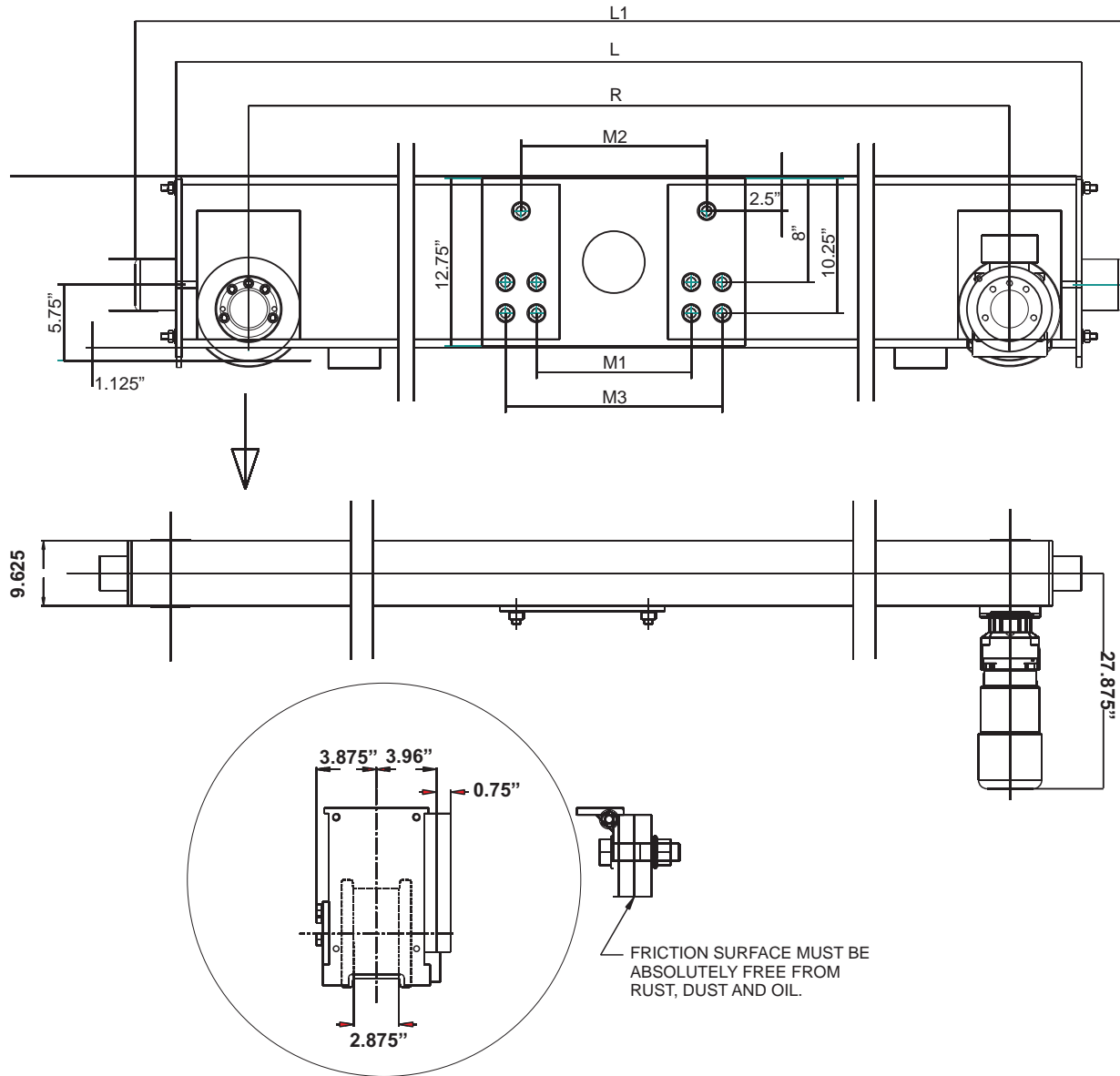
Model No.	Wheel Load	Moving Mass Lbs.	120 fpm Motor HP	Wheel Base (R) Ft.-In.	L Ft.-In.	L1 Ft.-In.	M3 In.	M4 In.	Weight per Pair
HSE-130.224.1500	11,240	24,000	2 x 0.75	5-0	5-7	6-1	12	15	592
HSE-130.224.1900	11,240	24,000	2 x 0.75	6-3	6-10	7-4	12	15	752
HSE-130.224.2200	10,610	24,000	2 x 0.75	7-3	7-10	8-4	12	15	812
HSE-130.224.2700	11,240	24,000	2 x 0.75	8-10	9-5	9-11	12	15	1122
HSE-130.224.3200	10,240	24,000	2 x 0.75	10-6	11-1	11-7	12	15	1282

# Specifications for EMH Style HSE160 Top Running Single Girder Endtrucks 6.5 in. Diameter Wheels



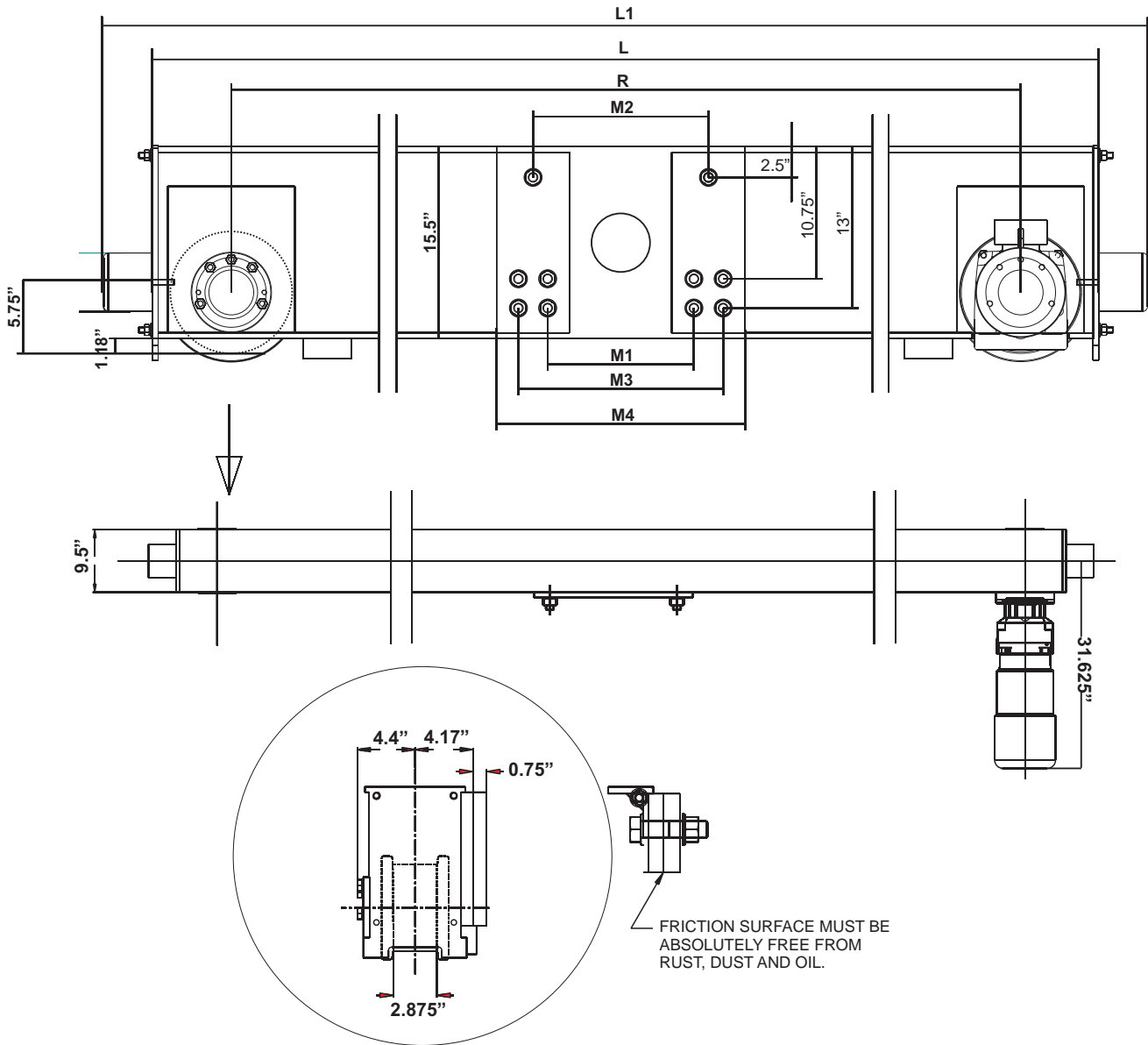
Model No.	Wheel Load	Moving Mass Lbs.	120 fpm Motor HP	Wheel Base (R) Ft.-In.	L Ft.-In.	L1 Ft.-In.	M1 In.	M2 In.	M3 In.	M4 In.	Weight per Pair
HSE-160.274.1900	16,400	35,200	2 x 1.0	6-3	7-1	7-7	12	14.25	16.5	20	822
HSE-160.274.2200	16,400	35,200	2 x 1.0	7-3	8-4	8-10	12	14.25	16.5	20	1022
HSE-160.274.2700	16,400	35,200	2 x 1.0	8-10	9-4	10-6	12	14.25	16.5	20	1282
HSE-160.274.3200	14,550	35,200	2 x 1.0	10-6	11-4	11-10	12	14.25	16.5	20	1442
HSE-160.274.3800	12,250	35,200	2 x 1.0	12-6	13-4	13-10	12	14.25	16.5	20	1632

# Specifications for EMH Style HSE200 Top Running Single Girder Endtrucks 8 in. Diameter Wheels



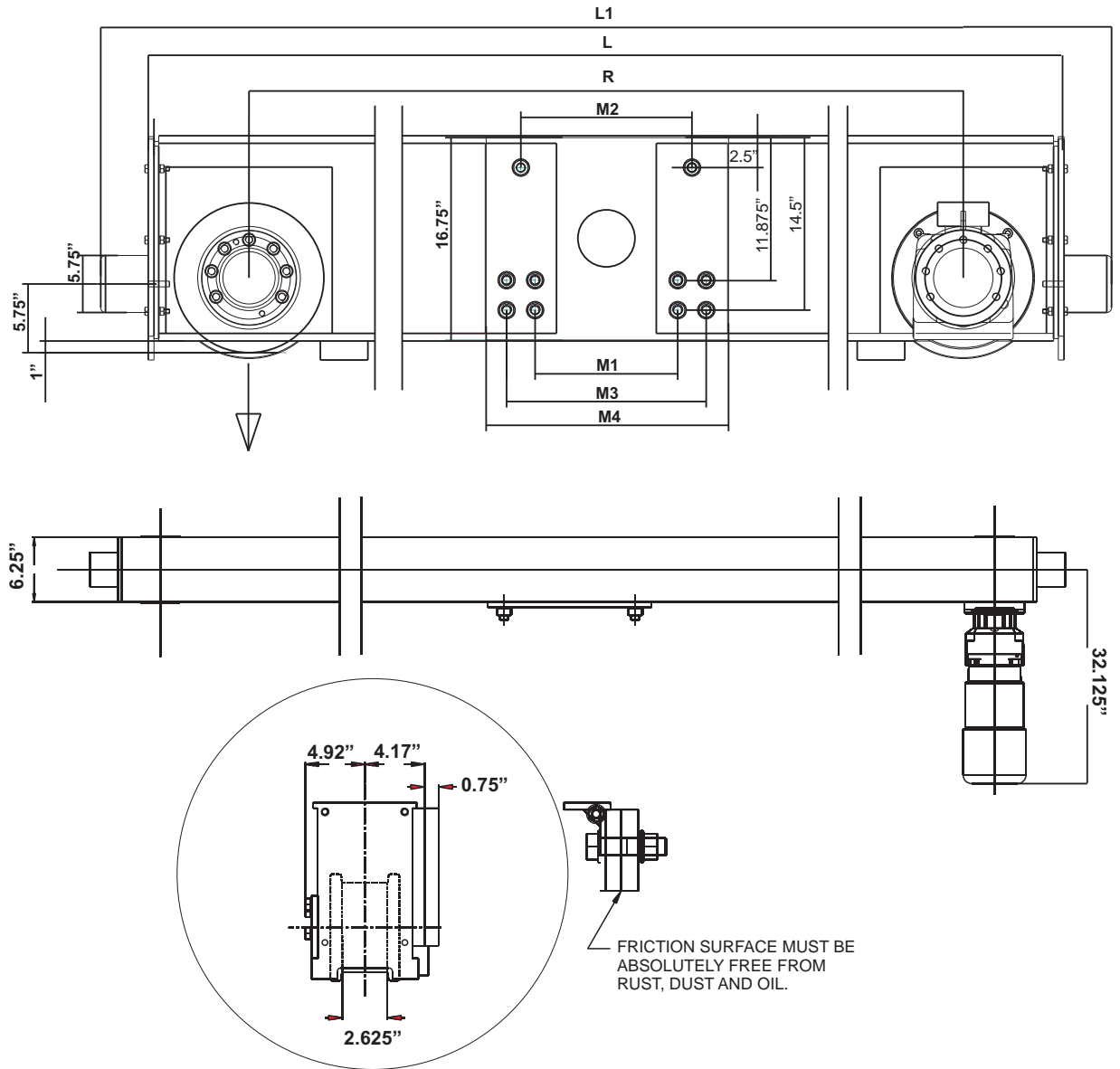
Model No.	Wheel Load	Moving Mass Lbs.	120 fpm Motor HP	Wheel Base (R) Ft.-in.	L Ft.-in.	L1 Ft.-in.	M1 In.	M2 In.	M3 In.	M4 In.	Wt. per Pair
HSE-200.324.1900	23,450	63,000	2 x 1.5	6-3	7-2	7-9	12	14.25	16.5	20	1106
HSE-200.324.2200	23,450	63,000	2 x 1.5	7-3	8-2	8-9	12	14.25	16.5	20	1186
HSE-200.324.2700	18,850	63,000	2 x 1.5	8-10	9-9	10-4	12	14.25	16.5	20	1426
HSE-200.324.3200	19,900	63,000	2 x 1.5	10-6	11-5	12-0	12	14.25	16.5	20	1786
HSE-200.324.3800	16,750	63,000	2 x 1.5	12-6	13-5	14-0	12	14.25	16.5	20	2026

# Specifications for EMH Style HSE250 Top Running Single Girder Endtrucks 10 in. Diameter Wheels



Model No.	Wheel Load	Moving Mass Lbs.	120 fpm Motor HP	Wheel Base (R) Ft.-In.	L Ft.-In.	L1 Ft.-In.	M1 In.	M2 In.	M3 In.	M4 In.	Weight per Pair
HE-250.394.1900	34,950	93,500	2 x 2.0	6-3	7-3	7-11	11.75	14.25	16.5	20	1882
HE-250.394.2200	30,200	93,500	2 x 2.0	7-3	8-3	9-0	11.75	14.25	16.5	20	1992
HE-250.394.2700	24,600	93,500	2 x 2.0	8-10	9-10	10-7	11.75	14.25	16.5	20	2172
HE-250.394.3200	20,750	93,500	2 x 2.0	10-6	11-6	12-2	11.75	14.25	16.5	20	2382
HE-250.394.3800	18,700	93,500	2 x 2.0	12-6	13-6	14-2	11.75	14.25	16.5	20	2792

# Specifications for EMH Style HSE315 Top Running Single Girder Endtrucks 12 in. Diameter Wheels



Model No.	Wheel Load	Moving Mass Lbs.	120 fpm Motor HP	Wheel Base (R) Ft.-In.	L Ft.-In.	L1 Ft.-In.	M1 In.	M2 In.	M3 In.	M4 In.	Weight per Pair
HSE-315.400.1900	38,700	140,000	2 x 3.0	6-3	7-7	8-4	12	14.25	16.5	20	2,136
HSE-315.400.2200	33,400	140,000	2 x 3.0	7-3	8-7	9-4	12	14.25	16.5	20	2,246
HSE-315.400.2700	27,250	140,000	2 x 3.0	8-10	10-2	10-11	12	14.25	16.5	20	2,446
HSE-315.400.3200	28,250	140,000	2 x 3.0	10-6	11-10	12-7	12	14.25	16.5	20	2,816
HSE-315.400.3800	23,800	140,000	2 x 3.0	12-6	13-10	14-7	12	14.25	16.5	20	3,086