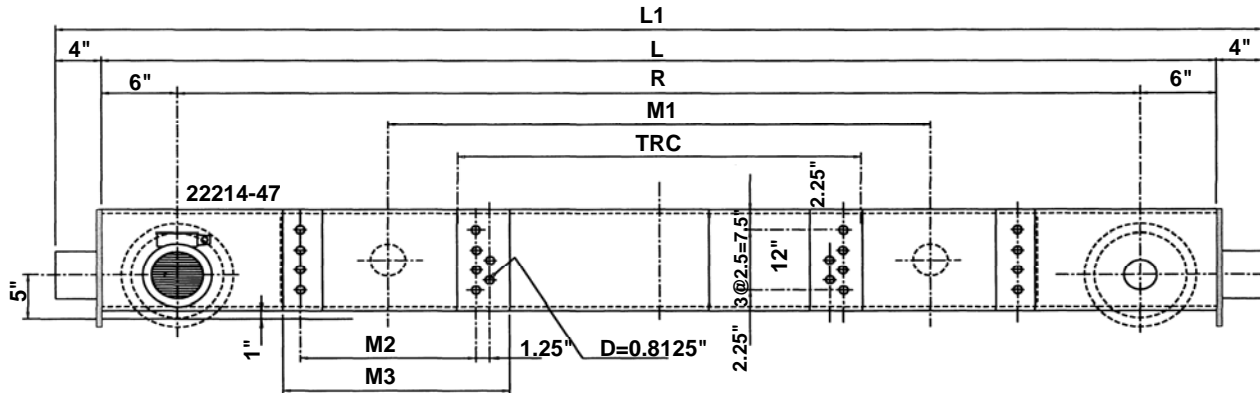
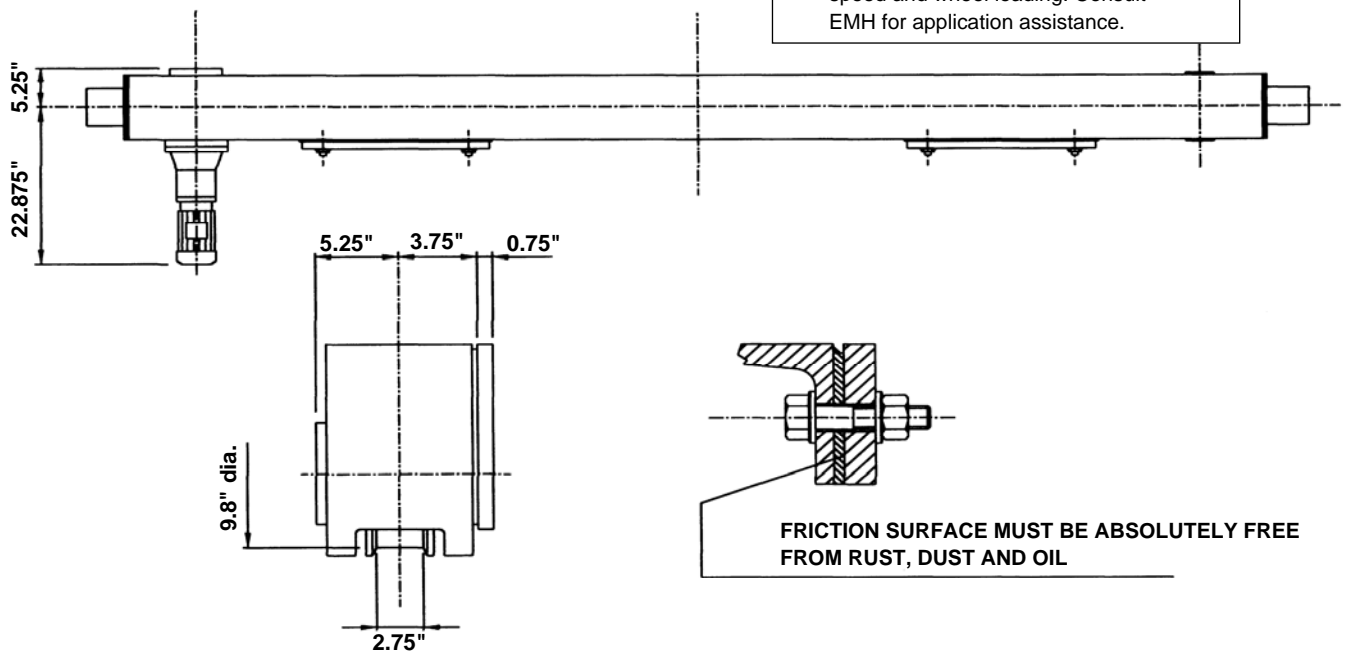


## Specifications for EMH Style HS-250 Top Running Double Girder End Trucks 10 In. Diameter Wheels

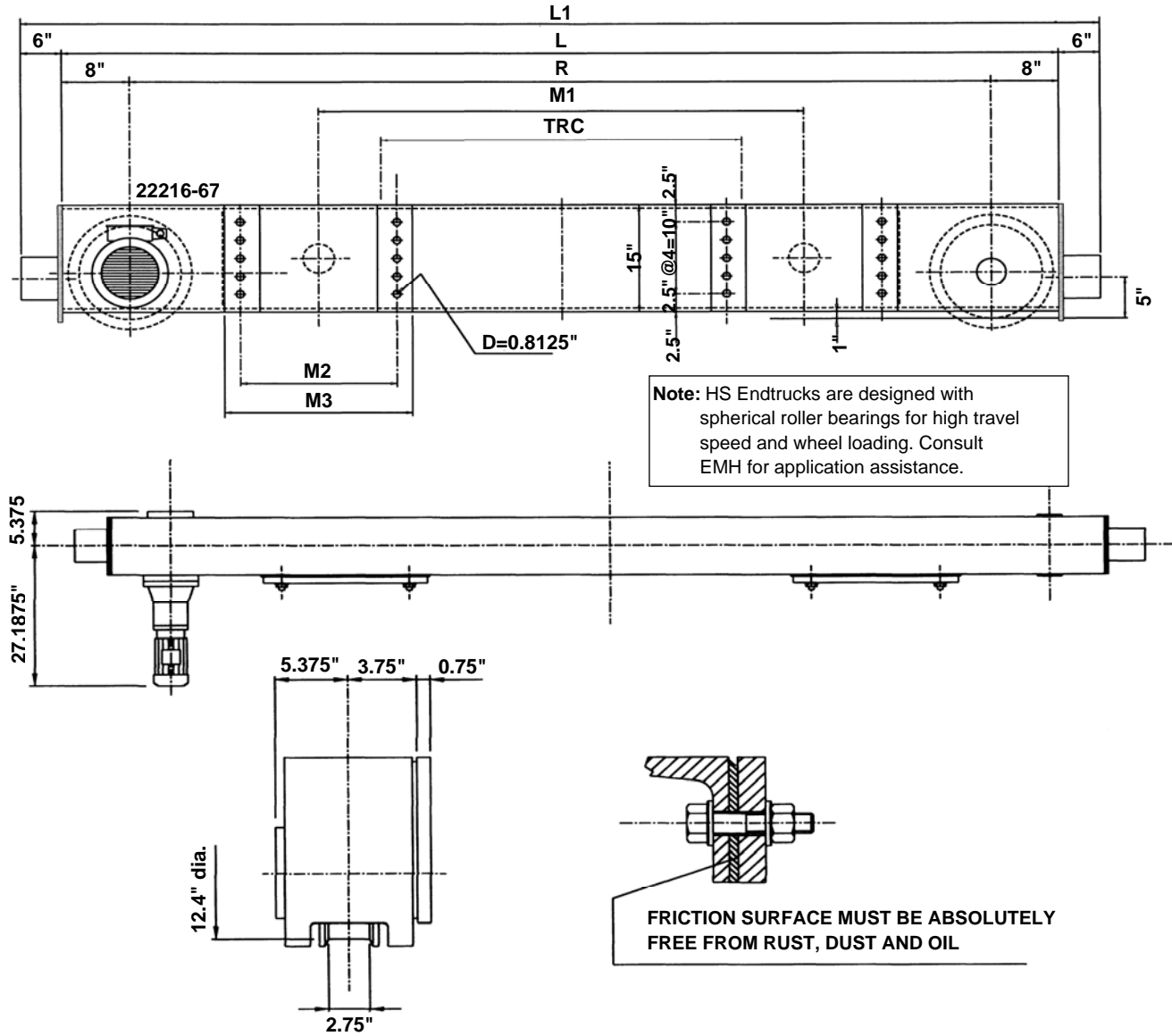


**Note:** HS Endtrucks are designed with spherical roller bearings for high travel speed and wheel loading. Consult EMH for application assistance.



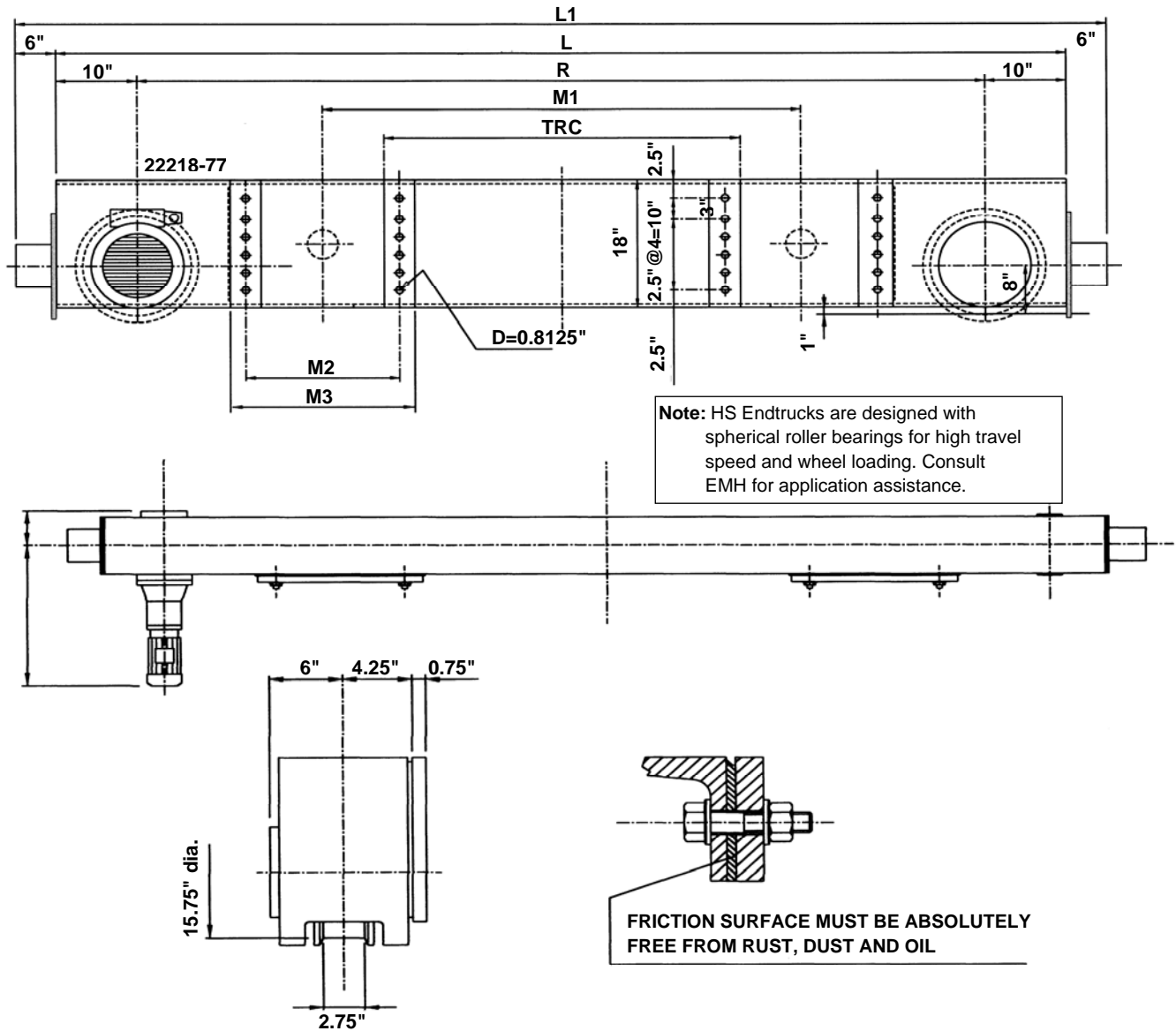
Model No.	Wheel Load	Moving Mass Lbs. 200 fpm VFD	Wheel Base (R) Ft.-In.	200 fpm Motor HP	L Ft.-In.	L1 Ft.-In.	M1 In.	M2 In.	M3 In.	TRC In.	Weight per Pair
HS-250.330.2700.3.16	29,250	64,000	8-10	2 x 3.0	9-10	10-6	71	12	17.25	63	2,160
HS-250.330.2900.4.16	29,250	64,000	9-6	2 x 3.0	10-6	11-2	75	16	21.25	63	2,240
HS-250.330.3200.4.16	29,250	64,000	10-6	2 x 3.0	11-6	12-2	75	16	21.25	63	2,290
HS-250.330.3800.5.20	29,250	64,000	12-6	2 x 3.0	13-6	14-2	94.75	20	25.25	78.75	2,710
HS-250.330.4600.5.25	29,250	64,000	15-0	2 x 3.0	16-0	16-8	114.5	20	25.25	98.5	3,120

## Specifications for EMH Style HS-315 Top Running Double Girder End Trucks 12 In. Diameter Wheels



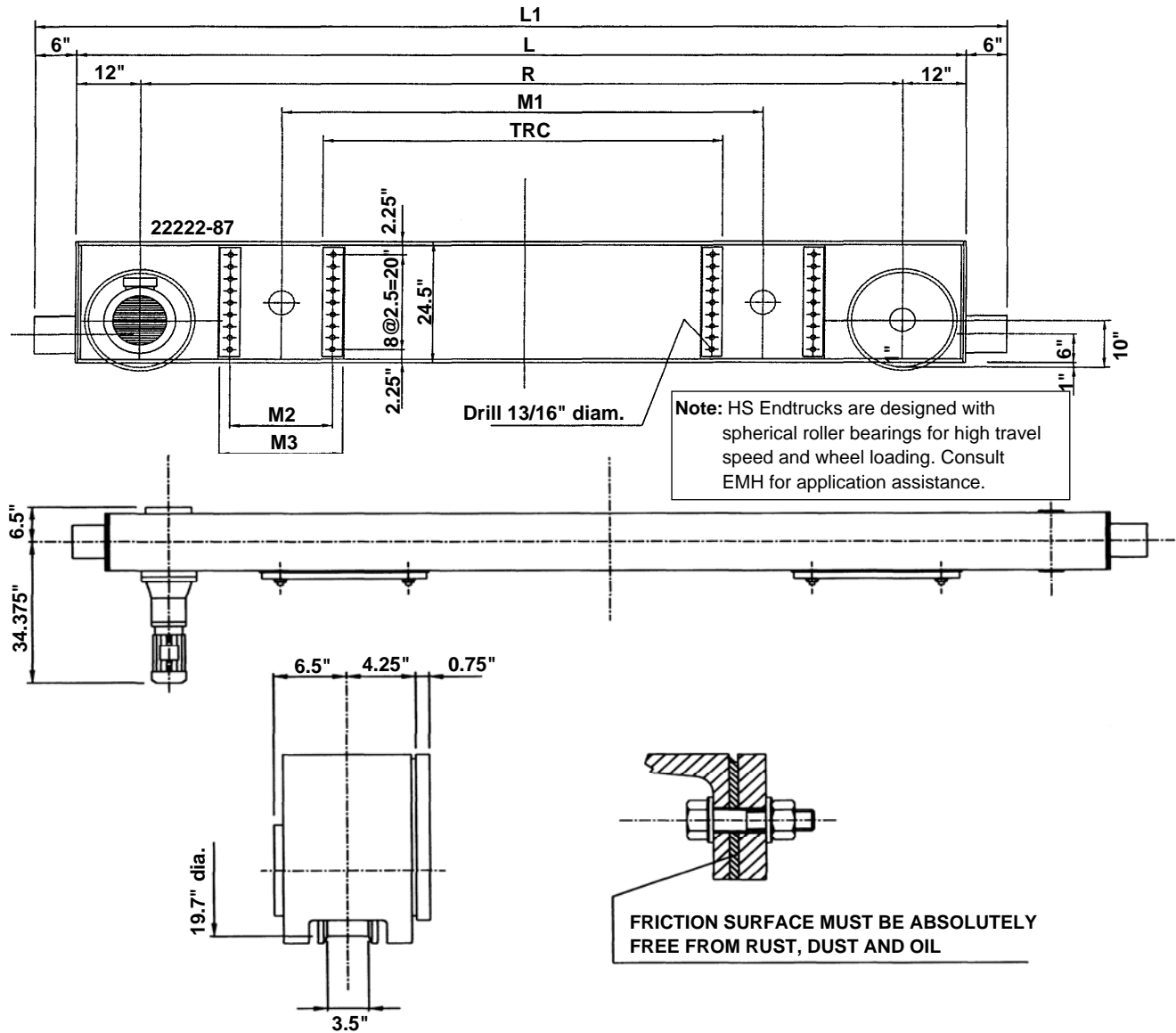
Model No.	Wheel Load	Moving Mass Lbs. 200 fpm VFD	Wheel Base (R) Ft.-In.	200 fpm Motor HP	L Ft.-In.	L1 Ft.-In.	M1 In.	M2 In.	M3 In.	TRC In.	Weight per Pair
HS-315.405.2700.3.16	38,850	91,520	8-10	2 x 4.0	10-2	11-2	71	12	16	63	3,200
HS-315.405.2900.4.16	38,850	91,520	9-6	2 x 4.0	10-10	11-10	75	16	20	63	3,340
HS-315.405.3200.5.16	38,850	91,520	10-6	2 x 4.0	11-10	12-10	79	20	24	63	3,540
HS-315.405.3800.5.20	38,850	91,520	12-6	2 x 4.0	13-10	14-10	94.75	20	24	78.75	3,950
HS-315.405.4600.6.25	38,850	91,520	15-0	2 x 4.0	16-4	17-4	118.5	24	28	98.5	4,460

## Specifications for EMH Style HS-400 Top Running Double Girder End Trucks 16 In. Diameter Wheels



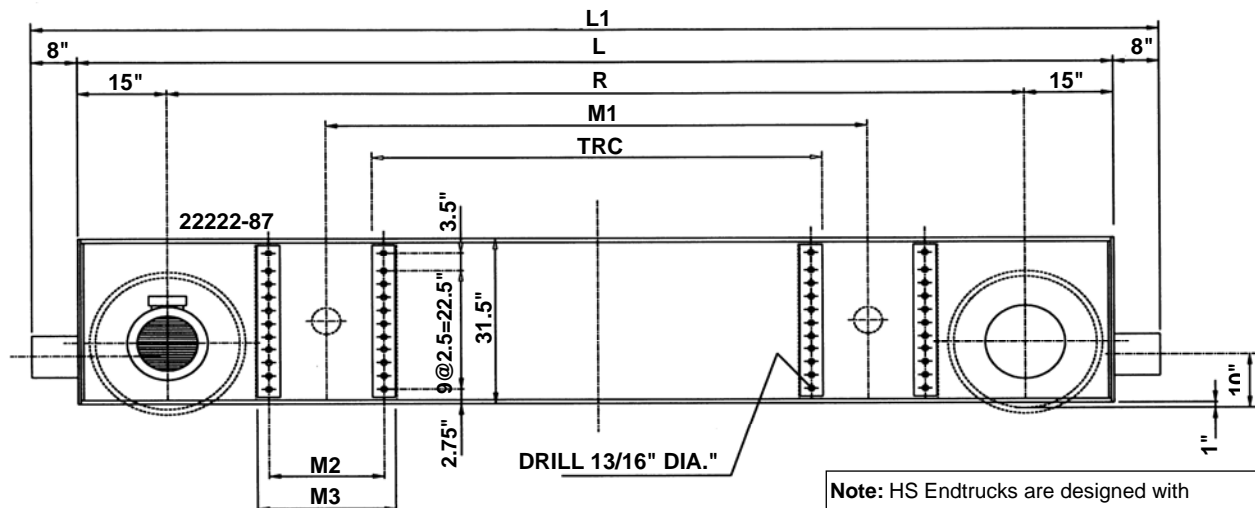
Model No.	Wheel Load	Moving Mass Lbs. 200 fpm VFD	Wheel Base (R) Ft.-In.	200 fpm Motor HP	L Ft.-In.	L1 Ft.-In.	M1 In.	M2 In.	M3 In.	TRC In.	Weight per Pair
HS-400.480.3200.5.16	52,000	169,500	10-6	2 x 7.5	12-2	13-2	79	20	24	63	4,250
HS-400.480.3800.5.20	52,000	169,500	12-6	2 x 7.5	14-2	15-2	94.75	20	24	78.75	4,630
HS-400.480.4100.5.25	52,000	169,500	13-6	2 x 7.5	15-2	16-2	114.5	20	24	98.5	5,260
HS-400.480.4600.6.25	52,000	169,500	15-0	2 x 7.5	16-8	17-8	118.5	24	28	98.5	5,690

## Specifications for EMH Style HS-500 Top Running Double Girder End Trucks 20 In. Diameter Wheels

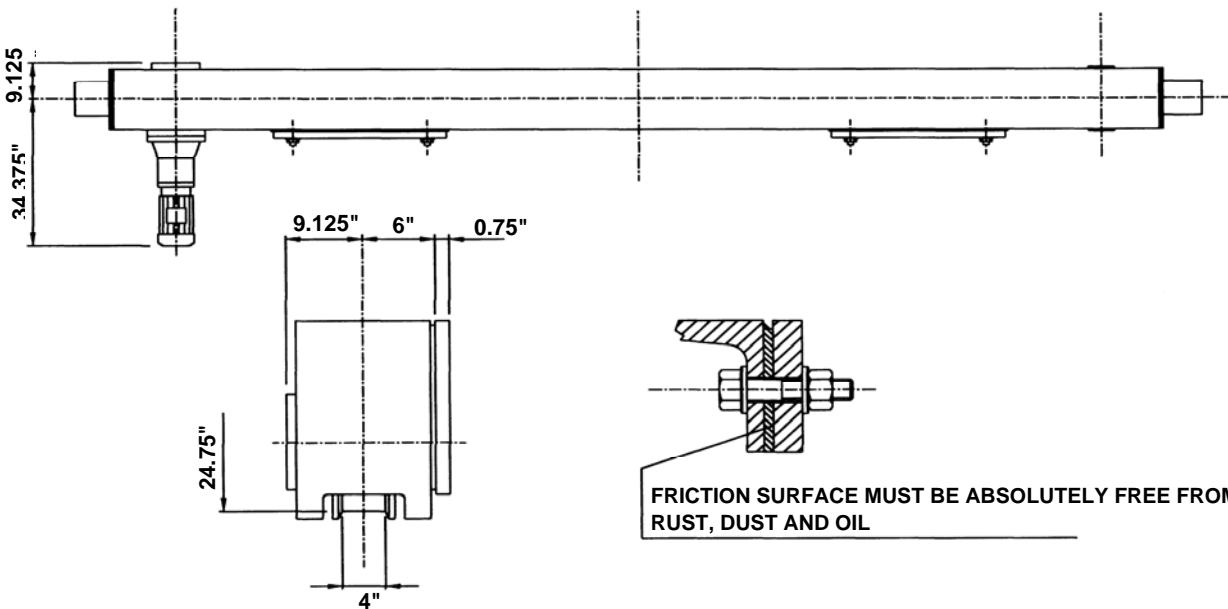


Model No.	Wheel Load	Moving Mass Lbs. 200 fpm VFD	Wheel Base (R) Ft.-In.	200 fpm Motor HP	L Ft.-In.	L1 Ft.-In.	M1 In.	M2 In.	M3 In.	TRC In.	Weight per Pair
HS-500.650.3200.5.20	60,000	180,000	12-6	2 x 7.5	14-6	15-6	94.75	20	24	78.75	3,500
HS-500.650.4100.5.20	60,000	180,000	13-6	2 x 7.5	15-6	16-6	114.5	20	24	98.5	3,650
HS-500.650.4600.6.25	60,000	180,000	15-0	2 x 7.5	17-0	18-0	118.5	24	28	98.5	4,200

## Specifications for EMH Style HS-630 Top Running Double Girder End Trucks 24.75 In. Diameter Wheels



**Note:** HS Endtrucks are designed with spherical roller bearings for high travel speed and wheel loading. Consult EMH for application assistance.



Model No.	Wheel Load	Moving Mass Lbs. 200 fpm VFD	Wheel Base (R) Ft.-In.	200 fpm Motor HP	L Ft.-In.	L1 Ft.-In.	M1 In.	M2 In.	M3 In.	TRC In.	Weight per Pair
HS-630.825.3900.5.20	76,000	180,000	12-10	2 x 7.5	15-4	16-8	94.75	20	24	78.75	5,500
HS-630.825.4400.5.25	76,000	180,000	14-5	2 x 7.5	16-11	18-7	114.5	20	24	98.5	5,650
HS-630.825.4600.6.25	76,000	180,000	15-0	2 x 7.5	17-6	18-10	118.5	24	28	98.5	6,200