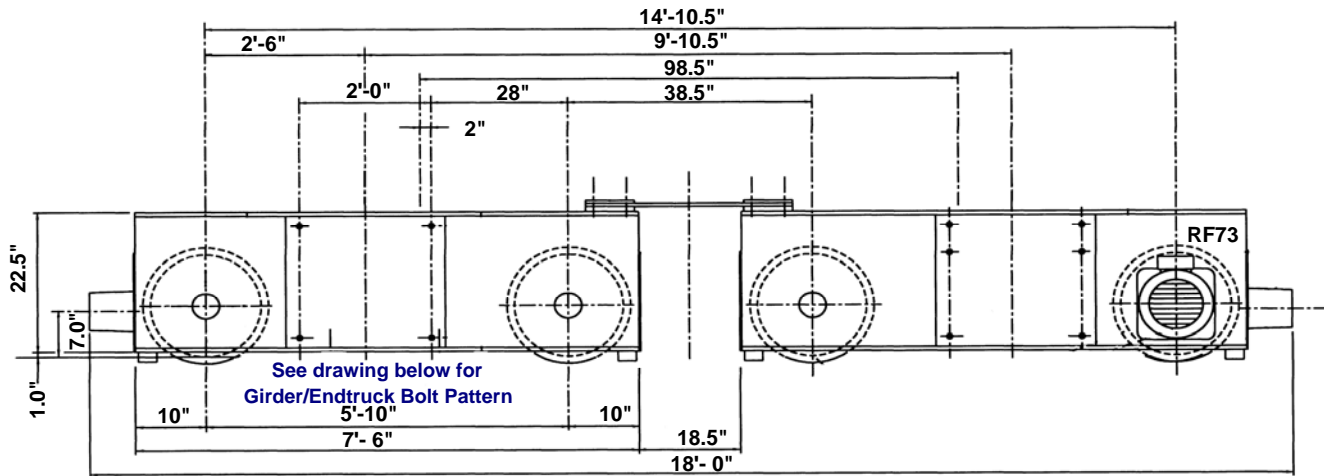
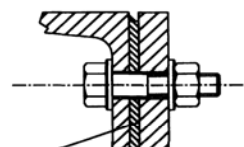
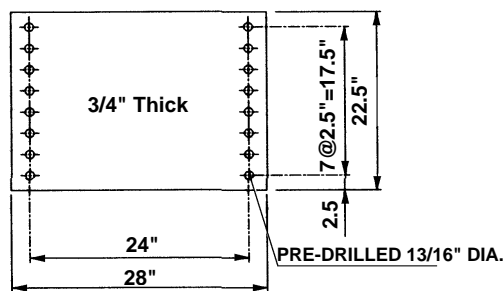


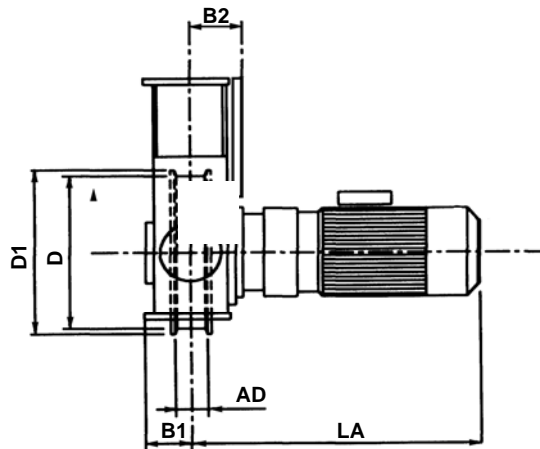
# Specifications for EMH Style HB-315 Top Running Bogie End Trucks 12 In. Diameter Wheels



## Girder/Endtruck Bolt Pattern

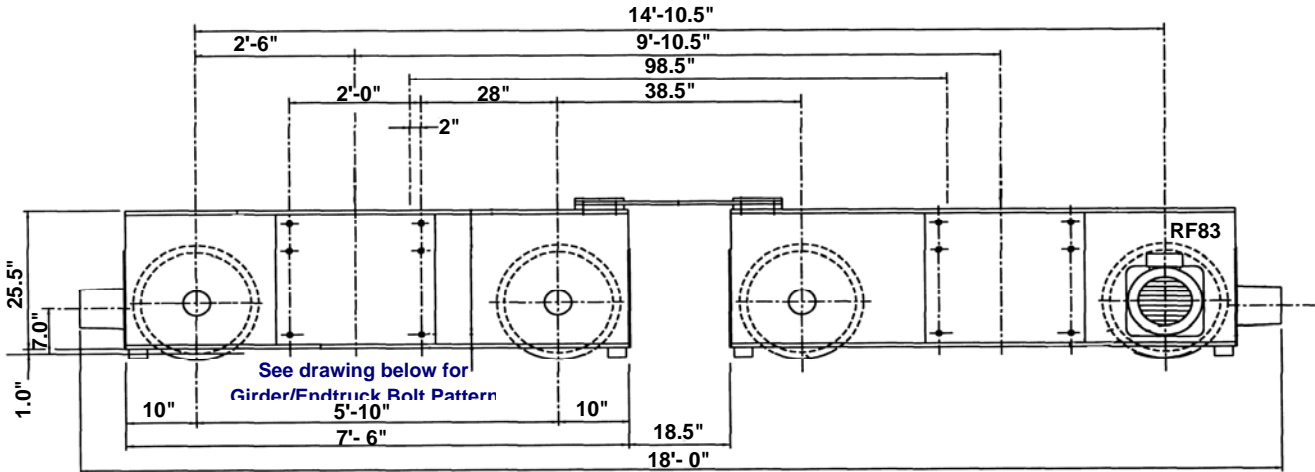


FRICION SURFACE MUST BE ABSOLUTELY FREE FROM RUST, DUST AND OIL

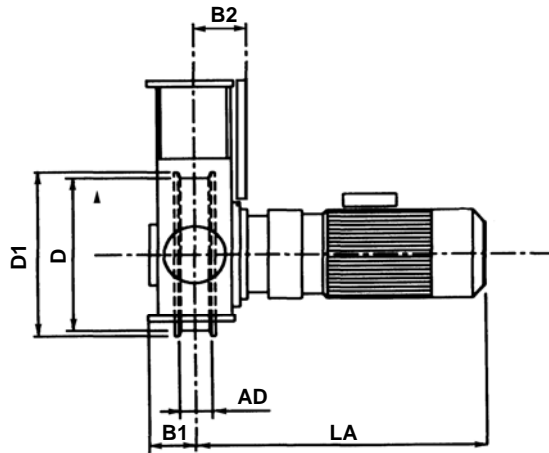
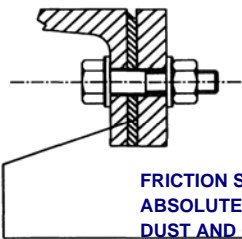
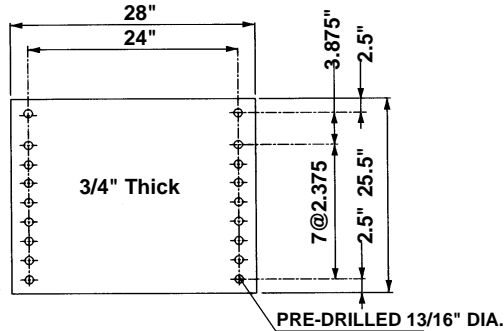


Model No.	No. of Drives	Wheel Load Lbs.	Moving Mass Lbs.	120 fpm Motor HP	LA In.	B1 In.	B2 In.	AD In.	D In.	D1 In.	Wt. per Pr. Lbs.
HB-315.575.4500.6.25.73.2	2	31,000	93,500	4 x 1.5	35.25	5.0	4.75	3.0	12.25	13.75	8,000

# Specifications for EMH Style HB-400 Top Running Bogie End Trucks 16 In. Diameter Wheels

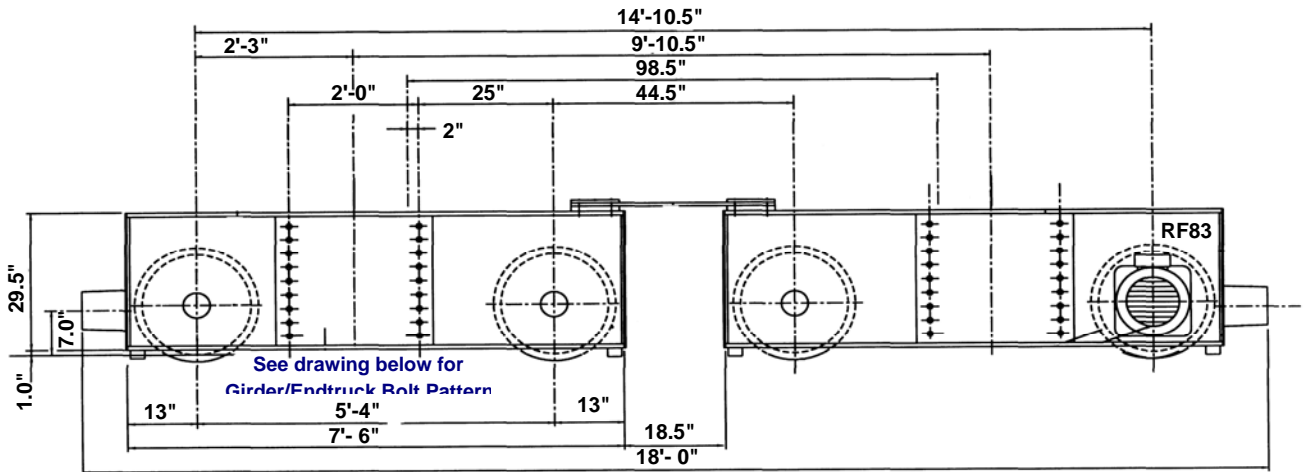


## Girder/Endtruck Bolt Pattern

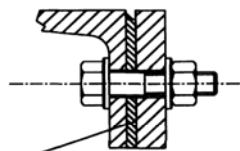
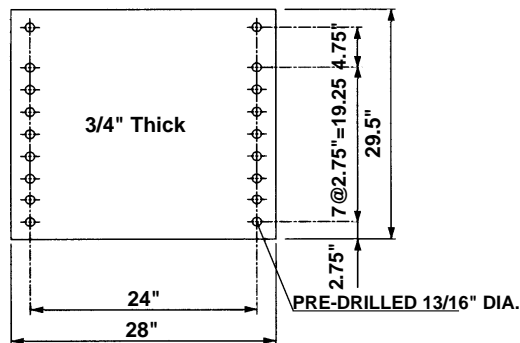


Model No.	No. of Drives	Wheel Load Lbs.	Moving Mass Lbs.	120 fpm Motor HP	LA In.	B1 In.	B2 In.	AD In.	D In.	D1 In.	Wt. per Pr. Lbs.
HB-400.650.4500.6.25.83.2	2	40,280	140,000	4 x 2.0	35.25	6.0	4.75	3.0	15.75	16.875	9,000

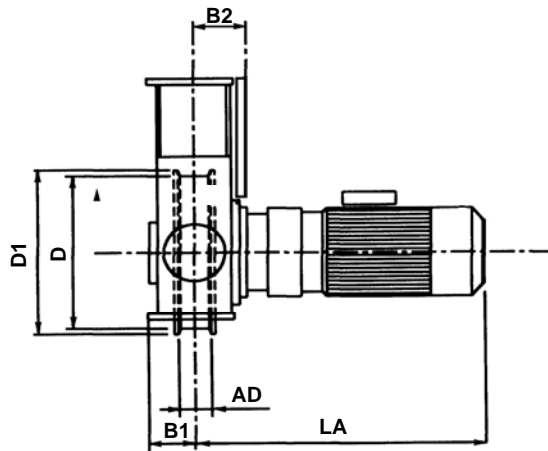
## Specifications for EMH Style HB-500 Top Running Bogie End Trucks 20 In. Diameter Wheels



### Girder/Endtruck Bolt Pattern

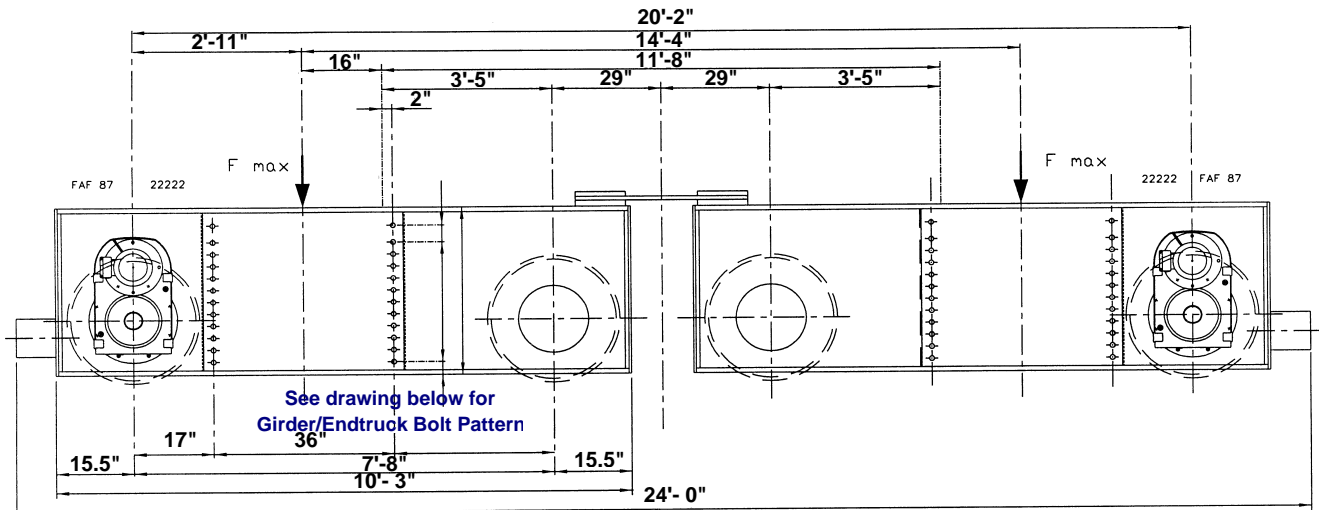


FRICION SURFACE MUST BE  
ABSOLUTELY FREE FROM RUST,  
DUST AND OIL

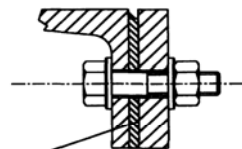
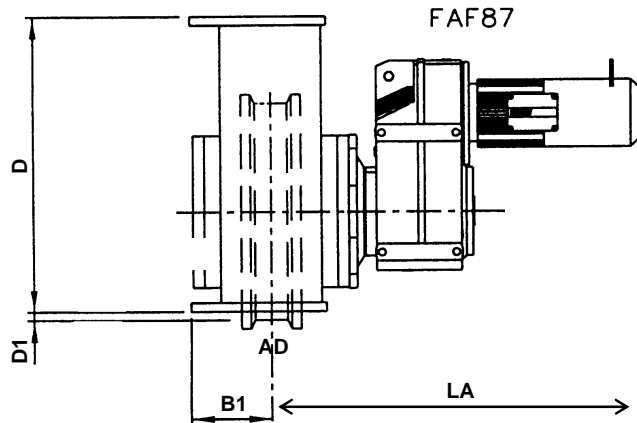
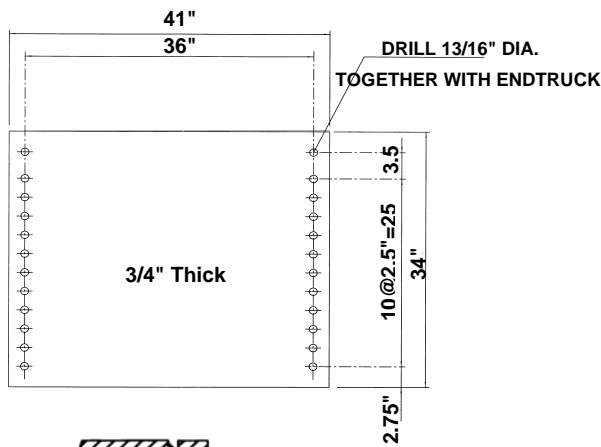


Model No.	No. of Drives	Wheel Load Lbs.	Moving Mass Lbs.	120 fpm Motor HP	LA In.	B1 In.	B2 In.	AD In.	D In.	D1 In.	Wt. per Pr. Lbs.
B-500.750.4500.6.25.93.2	2	44,500	200,000	4 x 3.0	39.5	5.5	5.375	3.0	19.625	21.25	9,800

# Specifications for EMH Style HB-630 Top Running Bogie End Trucks 24.75 In. Diameter Wheels



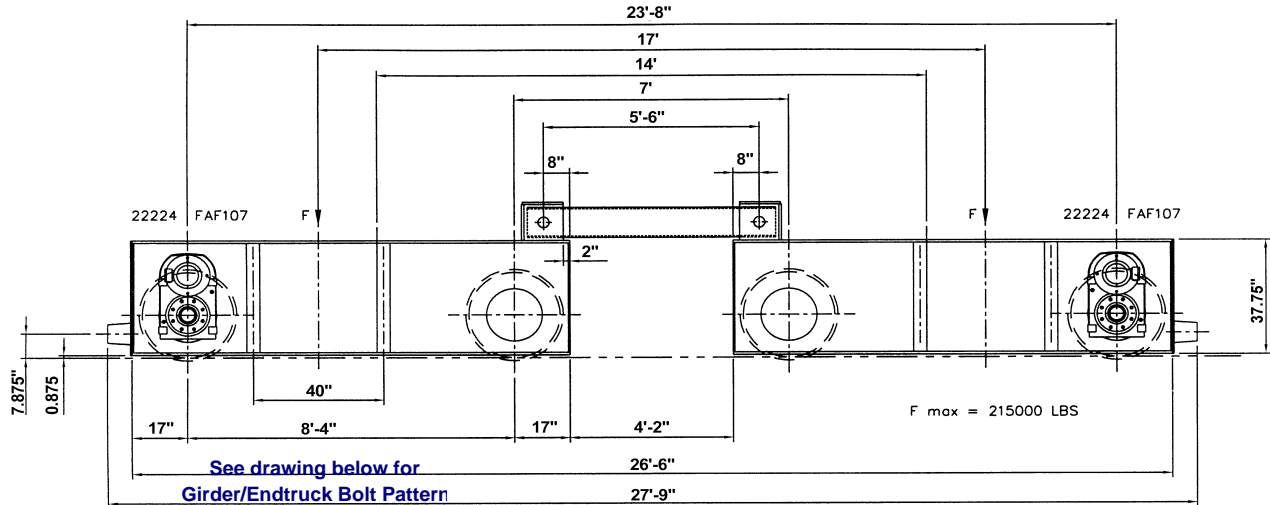
### Girder/Endtruck Bolt Pattern



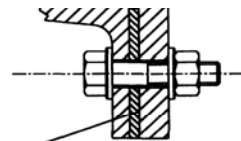
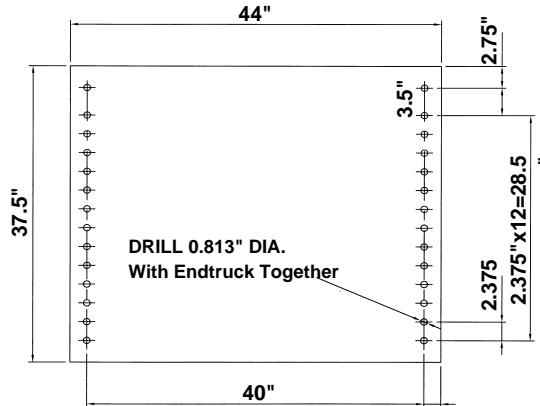
**FRICION SURFACE MUST BE ABSOLUTELY FREE FROM RUST, DUST AND OIL**

Model No.	No. of Drives	F Load Lbs.	Moving Mass Lbs.	120 fpm Motor HP	LA In.	B1 In.	B2 In.	AD In.	D In.	D1 In.	Wt. per Pr. Lbs.
HB-630.900.6150.9.35.83.4	4	140,000	400,000	4 x 7.5	38	9	6.75	4.75	34.000	1.00	11,000

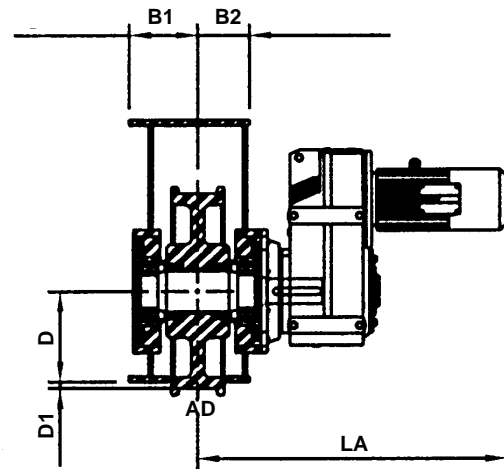
# Specifications for EMH Style HB-710 Top Running Bogie End Trucks 28 In. Diameter Wheels



**Girder/Endtruck Bolt Pattern**



**FRICION SURFACE MUST BE ABSOLUTELY FREE FROM RUST, DUST AND OIL**



Model No.	No. of Drives	F Load Lbs.	Moving Mass Lbs.	120 fpm Motor HP	LA In.	B1 In.	B2 In.	AD In.	D In.	D1 In.	Wt. per Pr. Lbs.
HB-710.980.7200.10.43.107.4	4	215,000	600,000	4 x 12.5	41	9.125	6.875	4.75	13	1.00	24,000