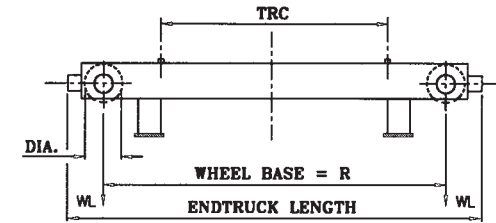
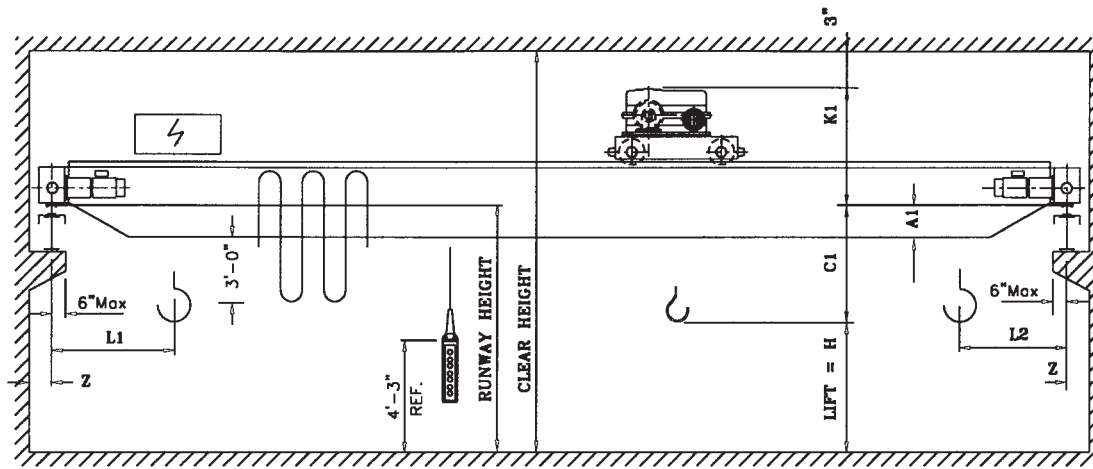


ZSK Engineered Cranes

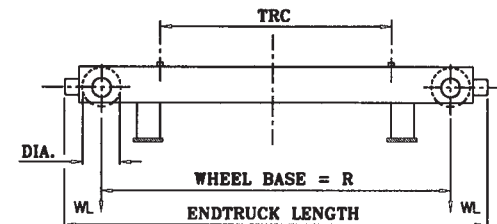
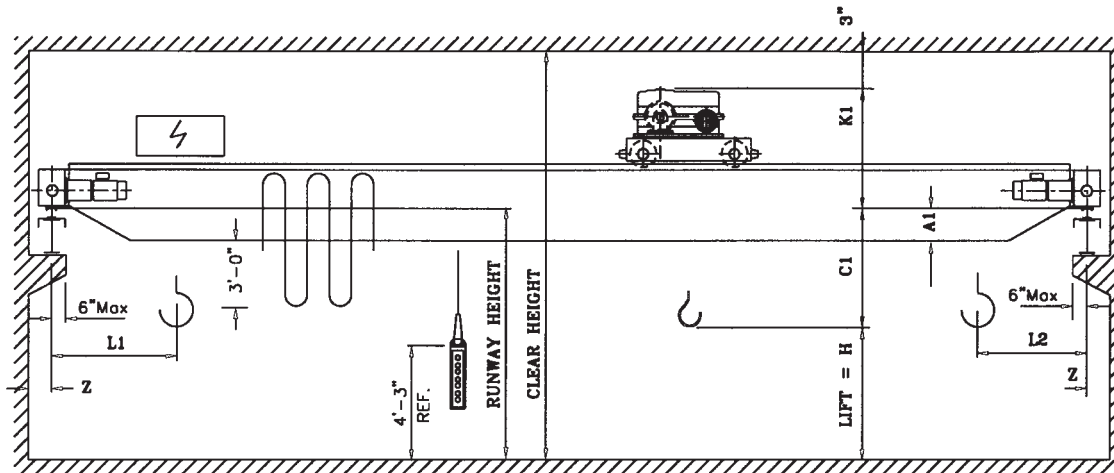


Notes:

1. Runway electrification is standard on left side.
2. Wheel loads do not include impact.
3. The hook approach may be affected by the location of the runway electrification system.

Engineered Crane Type ZSK1

Cap. Tons	Hoist			Trolley			Endtruck				Bridge						Rmax	Shipping Weight Lbs.	
	Type Reeving Rope Dia.	Speed FPM HP	Lift Ft.	Type Weight	Trolley HP	TRC	Wheel		Bridge Speed HP	Span Ft.	L1 In.	L2 In.	C1 In.	A1 In.	K1 In.	Z In.			
							Dia. In.	Base Ft.-In.											Length Ft.-In.
10	EH-8100 8PD 13/8" DIA.	20	30	EH-8100V.202.82.100.H	2x1.0	98.5	10HS	12'-6"	14'-2"	120 2X1.5	40	40	28	4'-0"	8	8	28	12045	7616
		15															32	12382	8384
		25															36	12772	9495
		20															40	13014	10104
		25															44	13436	11496
		20															48	13986	13450
		30															52	14224	14195
		25															56	14682	15842
		30					60	14922	16652										
		25					64	15416	18492										
		35					68	15664	19366										
		25					72	16200	21400										
		45					76	16826	23760										
		30					80	17088	24776										
		30					84	17556	26574										
							88	19596	34854										
	92	20344	37780																
	96	21178	41056																
	100	21990	44254																

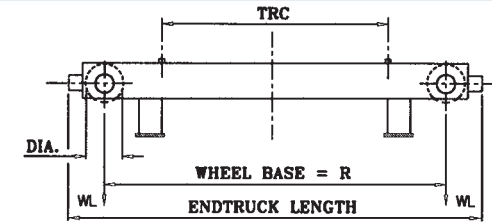
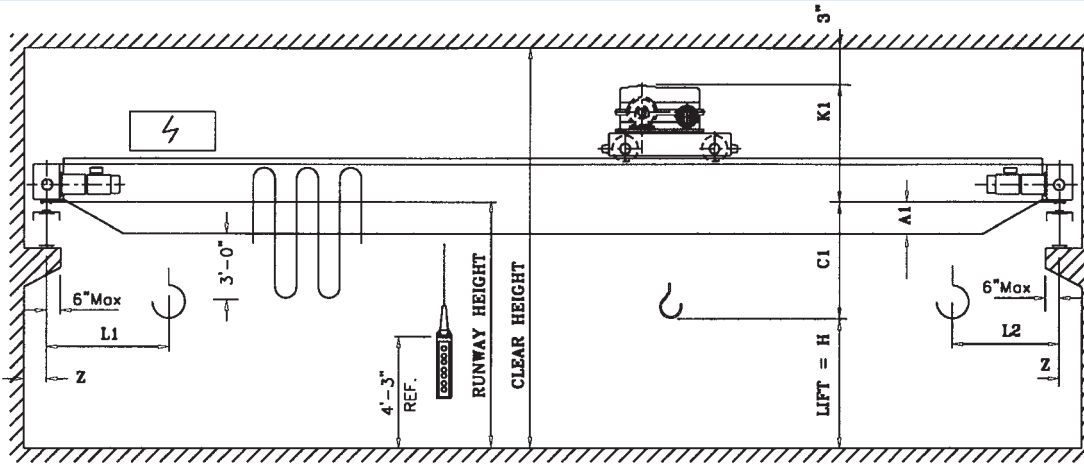


Engineered Crane Type ZSK2

Notes:

1. Runway electrification is standard on left side.
2. Wheel loads do not include impact.
3. The hook approach may be affected by the location of the runway electrification system.

Cap. Tons	Hoist			Trolley			Endtruck				Bridge						Rmax	Shipping Weight Lbs.				
	Type Reeving Rope Dia.	Speed FPM HP	Lift Ft.	Type Weight	Trolley HP	TRC	Wheel		Bridge Speed HP	Span Ft.	L1 In.	L2 In.	C1 In.	A1 In.	K1 In.	Z In.						
							Dia. In.	Base Ft.-In.											Length Ft.-In.			
20	EH-8200 8PD 1/2" DIA.	20	30	EH-8200V.202.82.100.H	2x1.0	98.5	12HS	13'-6"	15'-10"	120 2x2.0	44	44	28	8	4'-0"	8	23802	13210				
																	30	24432	14482			
		25															24962	15628				
																	35	25440	16760			
		EH-8200V.252.82.100.H															25	35	26000	18360		
																					26368	19302
																					26928	21100
																					27408	22632
																					28096	25054
																					28868	27842
				29232	29046																	
				29926	31595																	
				30220	32564																	
				30955	35322																	
		EH-8200V.302.82.100.H		30	40	28096	25054															
								28868	27842													
								29232	29046													
								29926	31595													
								30220	32564													
								30955	35322													
31724	38228																					
32676	41888																					
33082	43370																					
35160	51766																					
EH-8200V.352.82.100.H	35	50	33082	43370																		
					35160	51766																
					35724	51698																
					EH-8200V.452.82.100.H	45	60	35160	51766													
										35724	51698											
										35724	51698											
										35724	51698											
										35724	51698											
										35724	51698											
										35724	51698											
35724	51698																					
35724	51698																					
35724	51698																					

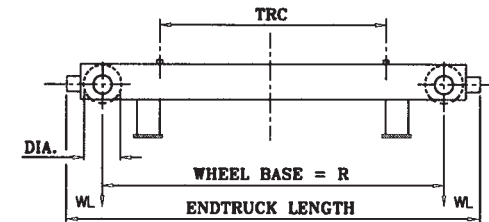
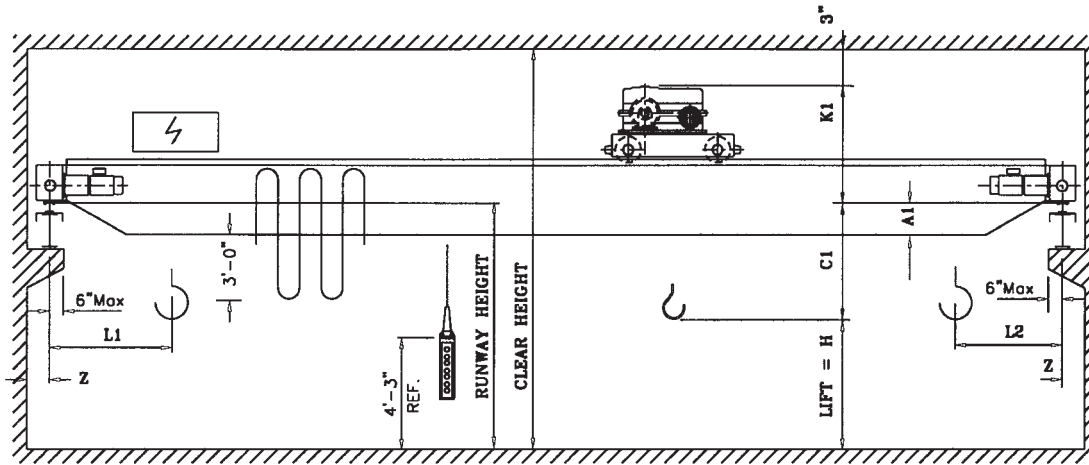


Notes:

1. Runway electrification is standard on left side.
2. Wheel loads do not include impact.
3. The hook approach may be affected by the location of the runway electrification system.

Engineered Crane Type ZSK3

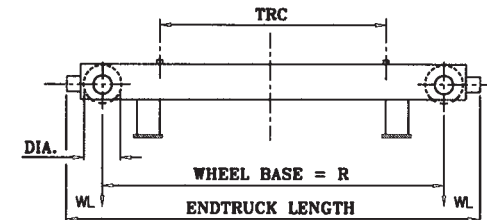
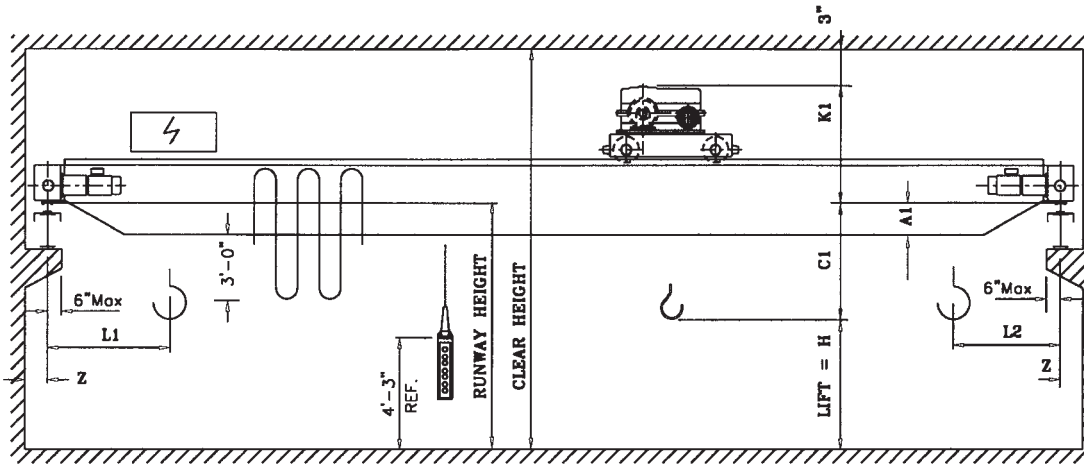
Cap. Tons	Hoist			Trolley			Endtruck				Bridge						Rmax	Shipping Weight Lbs.	
	Type Reeving Rope Dia.	Speed FPM HP	Lift Ft.	Type Weight	Trolley HP	TRC	Wheel		Length Ft.-in.	Bridge Speed HP	Span Ft.	L1 In.	L2 In.	C1 In.	A1 In.	K1 In.			Z In.
							Dia. In.	Base Ft.-in.											
25	EH-8250 8PD 9/16" DIA.	20	35	EH-8250V.202.82.100.H	2x1.5	98.5	12HS	13'-6"	15'-10"	120 2X3.0	28	46	46	26	8	4'-9"	8	29195	18374
																		32	29996
		36	30534	20938															
		40	31175	22524															
		44	31624	23515															
		48	32350	25748															
		52	32765	26842															
		56	33612	29746															
		60	34164	31532															
		64	34834	33848															
		68	35248	35176															
		72	36560	37768															
		76	37040	39422															
		80	38264	44070															
		84	39375	48190															
		88	38980	48932															
		92	39954	52648															
		96	40966	56542															
		100	42022	60618															
		45	75	EH-8250V.452.82.100.H			16HS	15'-0"	17'-10"	120 2X3.0	84	22	38	5'-0"	8	39954	52648		
40	40966				56542														



- Notes:
1. Runway electrification is standard on left side.
 2. Wheel loads do not include impact.
 3. The hook approach may be affected by the location of the runway electrification system.

Engineered Crane Type ZSK4

Cap. Tons	Hoist			Trolley			Endtruck				Bridge						Shipping										
	Type Reeving	Speed FPM	Lift Ft.	Type Weight	Trolley HP	TRC	Wheel		Bridge Speed HP	Span Ft.	L1 In.	L2 In.	C1 In.	A1 In.	K1 In.	Z In.	Rmax	Weight Lbs.									
	Rope Dia.	HP			HP		Dia. In.	Base Ft.-In.	Length Ft.-In.																		
30	EH-8300 8PD 5/8" DIA.	20	30	EH-8300V.202.82.100.H	2x2.0	98.5	12HS	13'-6"	15'-10"	120 2X3.0	28	46	46	26	4'-9"	8	34615	18624									
		32									35435						20015										
		36									36118						21275										
		40									36820						22900										
		44									37528						24770										
		48					38020	25876																			
		25					30	EH-8300V.252.82.100.H	2x2.0	98.5	12HS						13'-6"	15'-10"	120 2X3.0	52	46	46	22	5'-0"	8	38840	28522
		56																		39424						30270	
		60																		39970						31960	
		64																		40488						33588	
	68	41232	36172																								
	72	41155	35910																								
	35	30	EH-8300V.302.82.100.H	2x2.0	98.5	16HS					13'-6"	16'-2"	120 2X3.0	76	46	46	22	5'-0"	8	41594						37300	
	80													42354						42314							
	84													43186						43046							
	88													45670						52514							
	92						46024	53716																			
	96					47035	57566																				
	45					30	EH-8300V.352.82.100.H	2x2.0	98.5	16HS	15'-0"	17'-10"	120 2X3.0	100						46	46	22	5'-0"	8	48090	61596	
	100																										

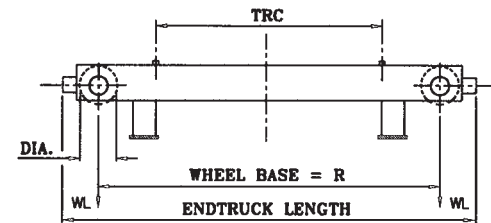
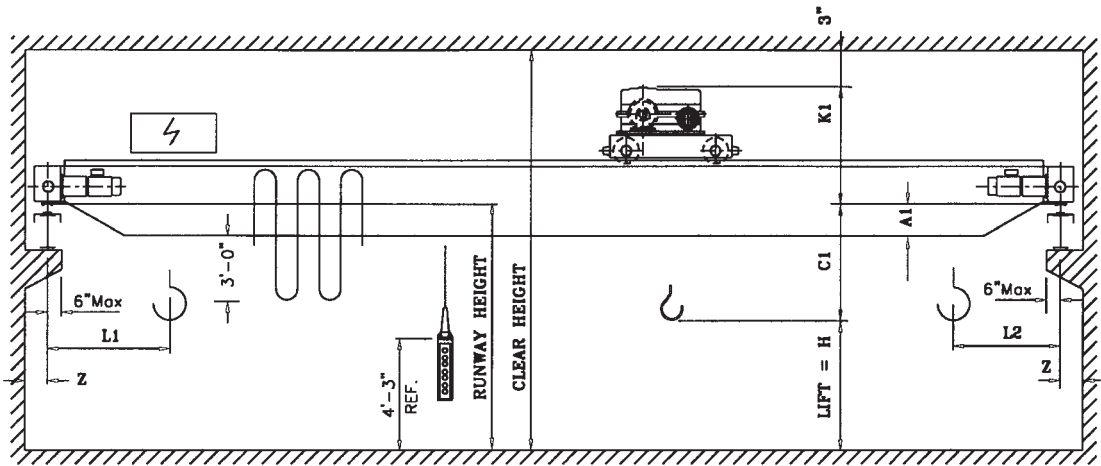


Notes:

1. Runway electrification is standard on left side.
2. Wheel loads do not include impact.
3. The hook approach may be affected by the location of the runway electrification system.

Engineered Crane Type ZSK5

Cap. Tons	Hoist			Trolley			Endtruck				Bridge						Shipping Weight Lbs.			
	Type Reeving Rope Dia.	Speed FPM HP	Lift Ft.	Type Weight	Trolley HP	TRC	Wheel		Bridge Speed HP	Span Ft.	L1 In.	L2 In.	C1 In.	A1 In.	K1 In.	Z In.			Rmax	Weight Lbs.
							Dia. In.	Base Ft.-In.	Length Ft.-In.											
40	EH-8400 8PD 5/8" DIA.	20 50	30	EH-8500V.202.82.100.H	2X2.5	98.5	16HS	13'-6"	16'-2"	120 2x4.0	28	46	46	28	14	5'-3"	8	43035	19842	
											32							45120	25155	
											36							45998	26666	
											40							46978	28312	
											44							47930	30658	
		48									48855							33138		
		52									50036							36832		
		56									50715							38660		
		60									51364							40488		
		64									51682							41662		
	25 60 30 75 35 100	EH-8400V.252.82.100.H	30	EH-8400V.302.82.100.H	2X2.5	98.5	20HS	15'-0"	18'-0"	120 2x4.0	68	46	46	24	30	5'-9"	8	52600	44745	
											72							53172	46514	
											76							54582	51692	
											80							55492	54912	
											84							56560	58810	
											88							57328	61525	
											92							58205	64730	
											96							59360	69058	
											100							60552	73568	

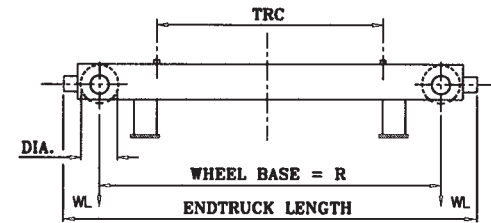
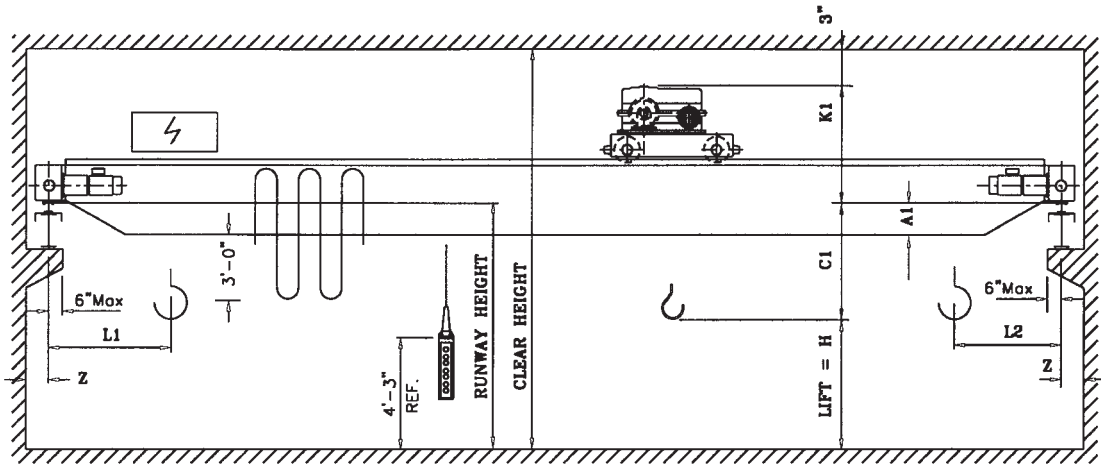


Notes:

1. Runway electrification is standard on left side.
2. Wheel loads do not include impact.
3. The hook approach may be affected by the location of the runway electrification system.

Engineered Crane Type ZSK6

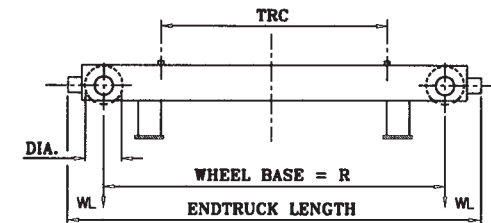
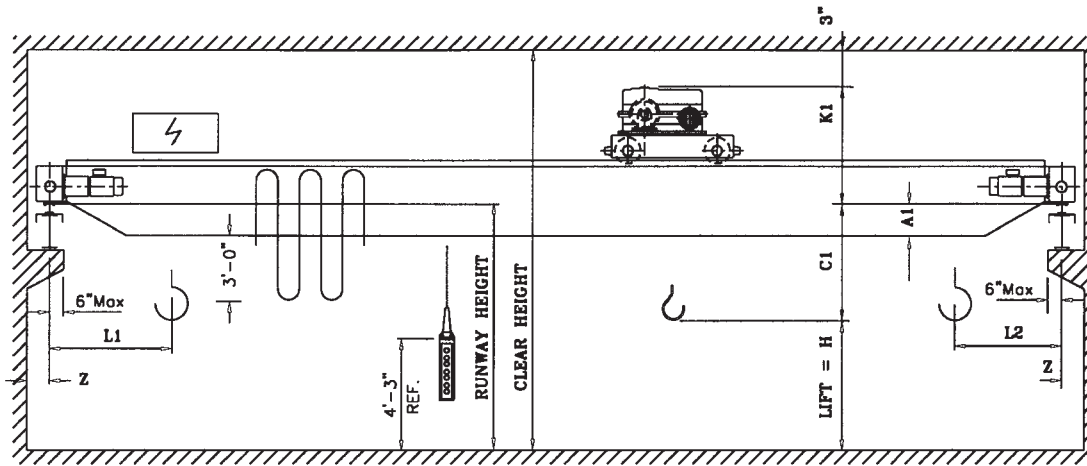
Cap. Tons	Hoist			Trolley			Endtruck			Bridge							Rmax	Shipping Weight Lbs.											
	Type Reeving	Speed FPM	Lift Ft.	Type Weight	Trolley HP	TRC	Wheel		Bridge Speed HP	Span Ft.	L1 In.	L2 In.	C1 In.	A1 In.	K1 In.	Z In.													
	Rope Dia.						Dia. In.	Base Ft.-In.	Length Ft.-In.																				
50	EH-8500 12PD 5/8" DIA.	14 50	30	EH-8500V.142.82.100.H	2x2.5	98.5	20HS	15'-0"	18'-0"	120 2x5.0	28	46	46	30	16	5'-6"	8	55945	26025										
											32							57205	27782										
											36							58398	30020										
		16 60									EH-8500V.162.82.100.H	20 75	EH-8500V.202.82.100.H	24HS	15'-0"	19'-2"	120 2x5.0	48	48	22	48	48	22	18	6'-8"	9	59320	31648	
																											44	60148	33292
																											48	61154	35922
																											52	62440	39884
																											56	63166	41784
																											60	64434	45892
																											64	65138	48034
	68		66344	52182																									
	72		67038	54358																									
	76		68142	58238																									
	28 100	EH-8500V.282.82.100.H	28 100	EH-8500V.282.82.100.H	24HS	15'-0"	19'-2"	120 2x5.0	48	48	22	48	48	22	18	6'-8"	9	69035	61324										
																		80	70850	67745									
																		84	71435	71980									
																		88	72015	73450									
																		92	73295	76830									
																		96	74574	81642									
	100																												



- Notes:
1. Runway electrification is standard on left side.
 2. Wheel loads do not include impact.
 3. The hook approach may be affected by the location of the runway electrification system.

Engineered Crane Type ZSK7

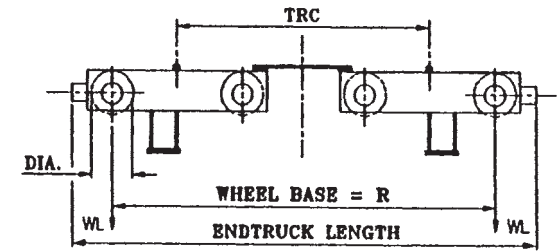
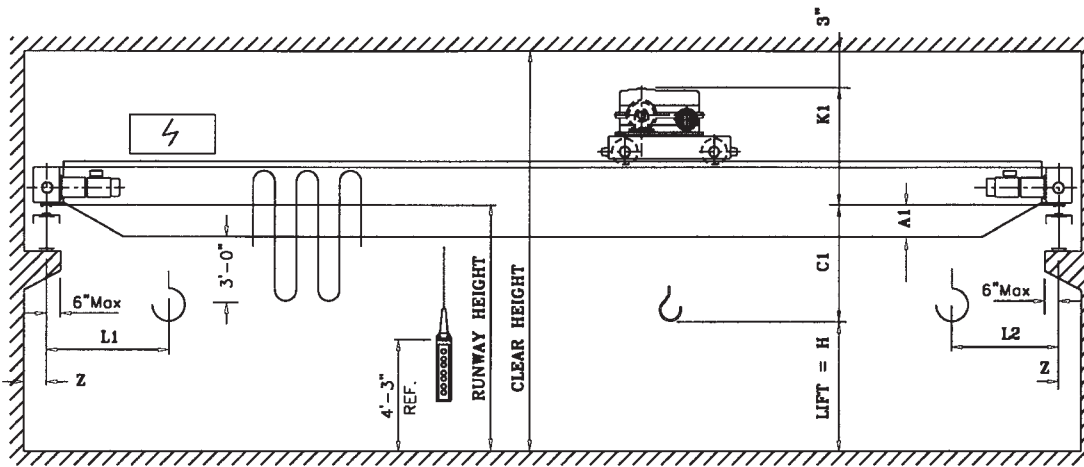
Cap. Tons	Hoist			Trolley			Endtruck			Bridge							Rmax	Shipping Weight Lbs.	
	Type Reeving	Speed FPM	Lift Ft.	Type Weight	Trolley HP	TRC	Wheel		Length Ft.-In.	Bridge Speed HP	Span Ft.	L1 In.	L2 In.	C1 In.	A1 In.	K1 In.			Z In.
	Rope Dia.	HP	Ft.	Weight	HP	TRC	Dia. In.	Base Ft.-In.											
60	EH-8600 12PD 3/4" DIA.	12 50	30	EH-8600V.122.122.100.H	2x2.5	118	24HS	16'-9"	20'-0"	120 2x5.0	48	48	2	6'-9"	9	28	64944	42350	
																32	66466	44150	
																36	67898	46500	
																40	69195	48985	
																44	70220	50880	
																48	70446	51785	
		14 60	EH-8600V.142.122.100.H	2x2.5	118	24HS	16'-9"	20'-0"	120 2x5.0	48	48	2	6'-9"	9	52	71400	53765		
															56	72816	57880		
															60	73685	60025		
															64	74816	60400		
															68	75984	67062		
															72	77134	70770		
		16 75	EH-8600V.162.122.100.H	2x2.5	118	24HS	16'-9"	20'-0"	120 2x5.0	48	48	2	6'-9"	9	76	78300	74650		
															80	79100	77124		
															84	80285	81245		
															88	81540	85690		
24 100	EH-8600V.242.122.100.H	2x2.5	118	24HS	16'-9"	20'-0"	120 2x5.0	48	48	2	6'-9"	9	92	82335	88342				
													96	83590	92878				
													96	83590	92878				
													100	84875	97580				



- Notes:
1. Runway electrification is standard on left side.
 2. Wheel loads do not include impact.
 3. The hook approach may be affected by the location of the runway electrification system.

Engineered Crane Type ZSK8

Cap. Tons	Hoist			Trolley			Endtruck				Bridge						Shipping Weight		
	Type Reeving	Speed FPM	Lift Ft.	Type	Trolley HP	TRC	Wheel		Bridge Length	Bridge Speed	Span	L1	L2	C1	A1	K1	Z	Rmax	Weight
	Rope Dia.	HP		Weight	HP		Dia. In.	Base Ft.-In.	Ft.-In.	HP	Ft.	In.	In.	In.	In.	In.	In.	Lbs.	
70	EH-8700 12PD 3/4" DIA.	12 60	30	EH-8700V.121.122.100.H	2x3.0	118	24HS	16'-9"	20'-0"	120 2x5.0	52	52	6	7'-4"	9			28	47865
																		32	49846
																		36	51828
																		40	54628
																		44	56690
		48																59736	
		52																62946	
		56																66430	
		60																70092	
		64																73810	
	68	76230																	
	72	80260																	
	76	84386																	
	80	88834																	
	EH-8700V.201.122.100.H	20 100			EH-8700V.201.122.100.H			28HS	16'-9"	20'-10"	120 2X7.5	54	54	2	10			84	93460
																		88	96120
																		92	101000
																		96	105886
																		100	108882

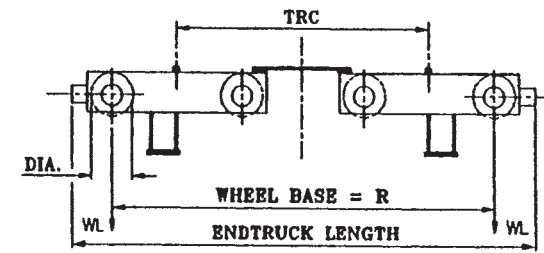
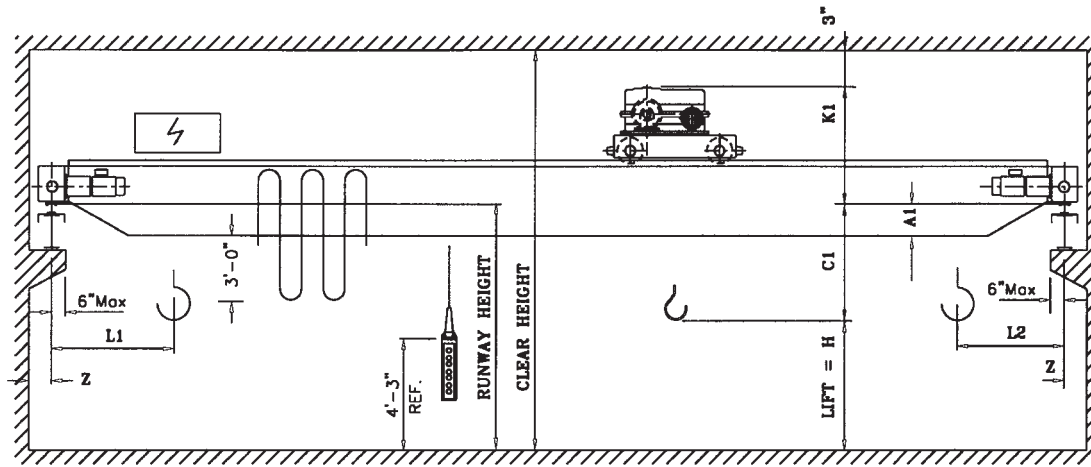


Notes:

1. Runway electrification is standard on left side.
2. Wheel loads do not include impact.
3. The hook approach may be affected by the location of the runway electrification system.

Engineered Crane Type ZSK9

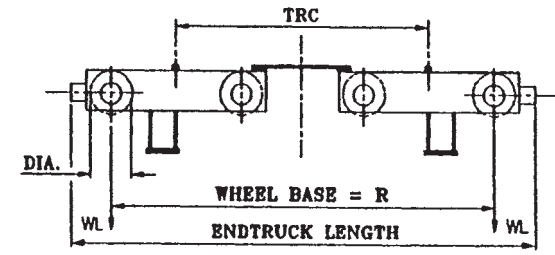
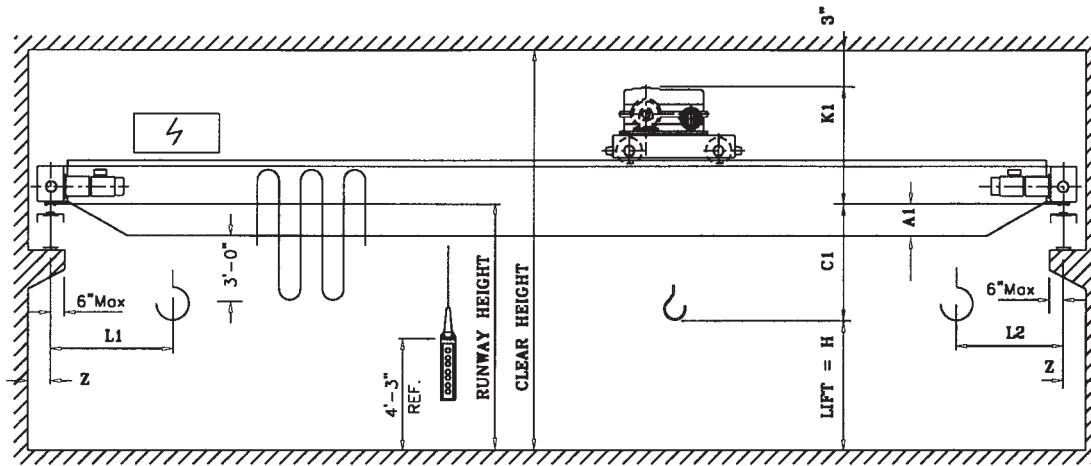
Cap. Tons	Hoist			Trolley			Endtruck				Bridge						Rmax	Shipping Weight Lbs.	
	Type Reeving Rope Dia.	Speed FPM HP	Lift Ft.	Type Weight	Trolley HP	TRC	Wheel		Length Ft.-in.	Bridge Speed HP	Span Ft.	L1 In.	L2 In.	C1 In.	A1 In.	K1 In.			Z In.
							Dia. In.	Base Ft.-in.											
80	EH-8800 12PD 3/4" DIA.	10 60	30	EH-8800V.101.122.100.H	2X3.0	118	28HS	16'-9"	20'-10"	120 2x7.5	54	54	26	7'-4"	8	18	82620	52350	
																18	85100	54650	
																18	87000	57000	
																18	89400	61650	
																18	91120	65200	
																22	92800	68850	
		22		94200	71600														
		26		95700	75550														
		26		97700	81750														
		22		49700	86940														
		26		50500	91600														
		26		51050	94850														
	30	51820	99760																
	30	52700	105800																
	30	53250	109300																
	34	54050	109800																
	38	54850	120250																
	38	55400	124000																
	42	56200	130000																
			15 100		EH-8800V.121.122.100.H			20HBS	16'-9"	20'-0"	120 2x7.5			21	7'-9"	10			



- Notes:
1. Runway electrification is standard on left side.
 2. Wheel loads do not include impact.
 3. The hook approach may be affected by the location of the runway electrification system.

Engineered Crane Type ZSK10

Cap. Tons	Hoist			Trolley			Endtruck			Bridge							Rmax	Shipping Weight Lbs.						
	Type Reeving	Speed FPM	Lift Ft.	Type Weight	Trolley HP	TRC	Wheel		Bridge Speed HP	Span Ft.	L1 In.	L2 In.	C1 In.	A1 In.	K1 In.	Z In.								
	Rope Dia.	HP			HP		Dia. In.	Base Ft.-In.	Length Ft.-In.	HP														
100	EH-81000 12PD 7/8" DIA.	8 60	30	EH-81000V.081.122.100.H	2x3.0	118	20HBS	16'-9"	20'-0"	120 2x7.5	28	60	60	32	12	8'-0"	10	50500	55200					
											32							51850	59000					
											36							53200	62600					
											40							54300	65700					
											44							55400	70100					
		48					56450	74300																
		52					57500	79300																
		56					58400	83900																
		60					60150	95200																
		64					61100	100100																
	68	61700	103650																					
	72	62650	109600																					
	76	63500	115000																					
	80	64450	121450																					
	84	65350	127300																					
	88	66000	131250																					
	92	66890	137400																					
	96	67500	141600																					
	100	68450	147850																					
			14		EH-81000V.101.122.100.H			24HBS	16'-9"	21'-10"	120 2x7.5			28	8'-4"	10								
		100																						

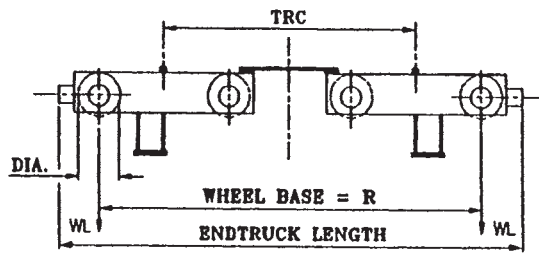
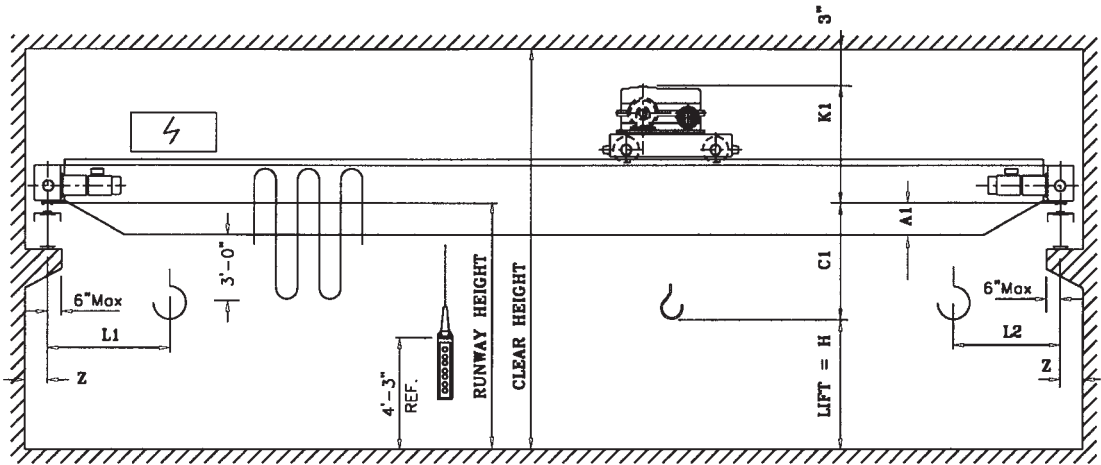


Notes:

1. Runway electrification is standard on left side.
2. Wheel loads do not include impact.
3. The hook approach may be affected by the location of the runway electrification system.

Engineered Crane Type ZSK11

Cap. Tons	Hoist			Trolley			Endtruck				Bridge						Shipping Weight Lbs.			
	Type Reeving Rope Dia.	Speed FPM HP	Lift Ft.	Type Weight	Trolley HP	TRC	Wheel		Length Ft.-In.	Bridge Speed HP	Span Ft.	L1 In.	L2 In.	C1 In.	A1 In.	K1 In.		Z In.	Rmax	
							Dia. In.	Base Ft.-In.												
125	EH-8125 12PD 1" DIA.	7 60	30	EH-81250V.071.122.100.H	2X4.0	118	24HBS	16'-9"	21'-10"	120 2x10	60	60	44	9'-0"	10			28	62950	70330
																		32	65050	74130
																		36	66550	77270
																		40	67916	81350
																		44	69410	87548
																		48	70442	91052
																		52	71550	95778
																		56	71660	101260
																		60	73675	106402
		64		74750														112384		
		68		75735														117942		
		72		76500														121996		
		76		77460														127836		
		80		78522														134678		
		84		79244														138962		
		88		80210														145312		
		92		81182														151850		
		96		82288														159552		
100	83415	167524																		
		12 100		EH-81250V.101.122.100.H																
				EH-81250V.121.122.100.H																



- Notes:
1. Runway electrification is standard on left side.
 2. Wheel loads do not include impact.
 3. The hook approach may be affected by the location of the runway electrification system.

Engineered Crane Type ZSK12

Cap. Tons	Hoist			Trolley			Endtruck				Bridge						Shipping Weight Lbs.			
	Type Reeving	Speed FPM	Lift Ft.	Type Weight	Trolley HP	TRC	Wheel		Length Ft.-In.	Bridge Speed HP	Span Ft.	L1 In.	L2 In.	C1 In.	A1 In.	K1 In.		Z In.	Rmax	
	Rope Dia.	HP				Dia. In.	Base Ft.-In.													
150	EH-81500 12PD 1" DIA.	7	30	EH-81500V.071.122.100.H	2X5.0	118	24HBS	16'-9"	20'-0"	120 2x10	28	60	60	44	14	9'-0"	10	75000	78600	
											32	60	60	44	18	9'-0"	10	77000	82500	
											36	60	60	44	18	9'-0"	10	79500	87200	
											40	60	60	44	22	9'-0"	10	81000	92000	
											44	60	60	44	22	9'-0"	10	82500	97000	
		48	60								60	44	22	9'-0"	10	83750	102600			
		52	60								60	44	22	9'-0"	10	85000	108400			
		56	60								60	44	26	9'-0"	10	86200	114000			
		60	60								60	44	30	9'-0"	10	87400	120000			
		64	60								60	44	30	9'-0"	10	88600	126000			
	EH-81500V.101.122.100.H	10	100	30	EH-81500V.101.122.100.H	2X5.0	118	28HBS	17'-6"	21'-3"	120 2x7.5	64	64	64	38	32	9'-4"	12	89500	130000
												72	64	64	38	32	9'-4"	12	99000	155200
												76	64	64	38	32	9'-4"	12	94000	160000
												80	64	64	38	36	9'-4"	12	95000	166500
												84	64	64	38	36	9'-4"	12	96000	174200
												88	64	64	38	40	9'-4"	12	97000	181000
												92	64	64	38	40	9'-4"	12	98300	189000
												96	64	64	38	44	9'-4"	12	99400	196800
												100	64	64	38	44	9'-4"	12	100250	202000