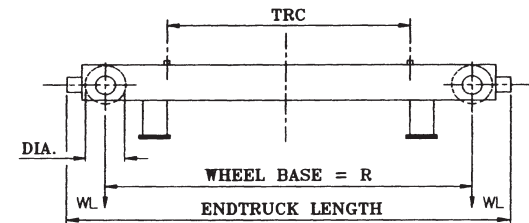
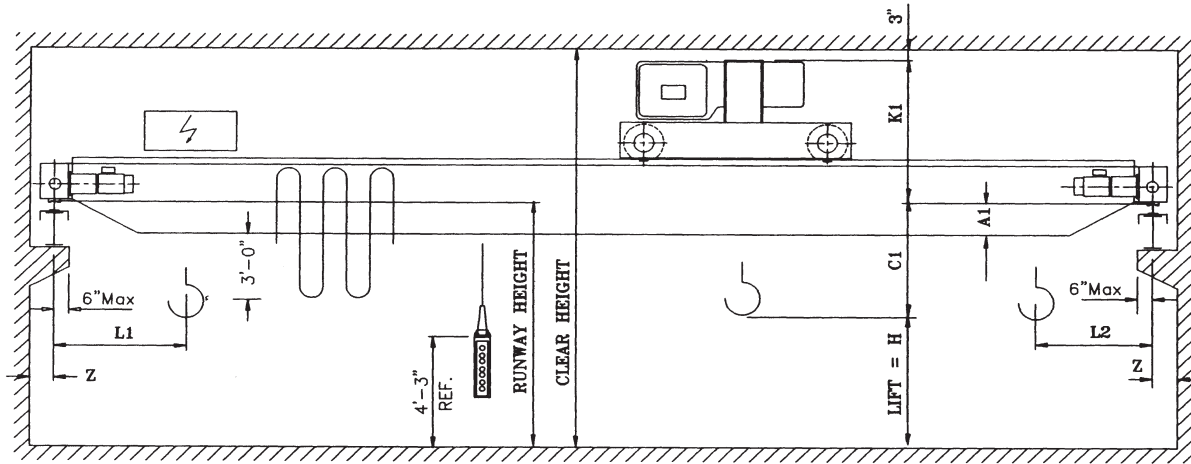


ZLK Top Running Double Box Girder Cranes



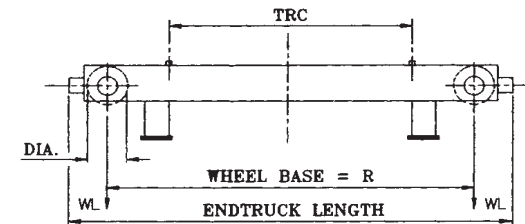
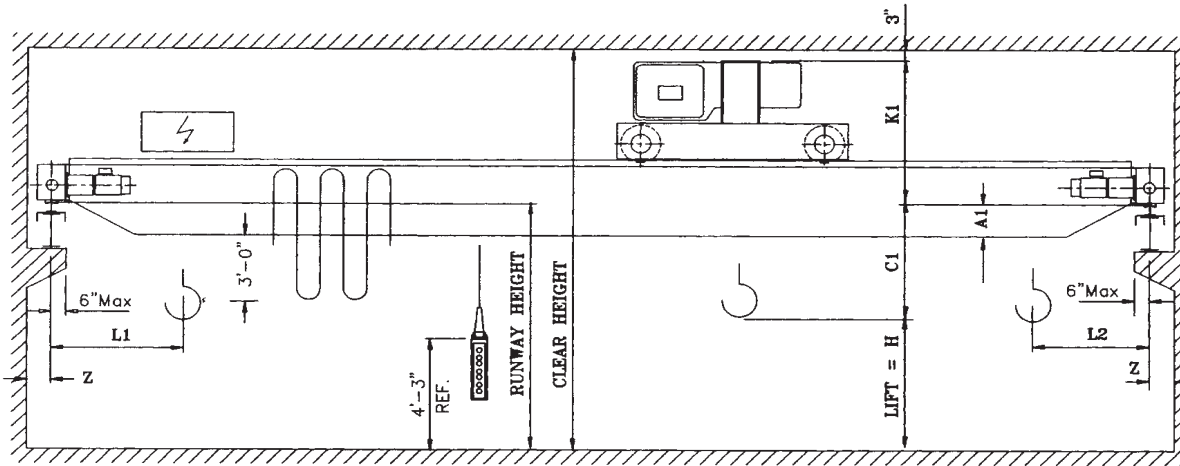
Notes:

1. Runway electrification is standard on left side.
2. Wheel loads do not include impact.
3. Shipping weights include hoist and trolley.

Double Girder Crane Type ZLK1

WHEEL LOADS INDICATED WITHOUT IMPACT OR WALKWAY

Cap. Tons	Hoist			Trolley			Endtruck				Bridge							Wheel Load Lbs.	Shipping Weight Lbs.		
	Type Reeving Rope Dia.	Speed FPM HP	Lift Ft.	Type Weight	HP per Motor 80 FPM VFD	TRC In.	Wheel			HP per Motor 120 VFD	Span Ft.	L1 In.	L2 In.	C1 In.	A1 In.	K1 In.	Z In.				
							Dia. In.	Base Ft.-In.	Length Ft.-In.												
5	1050 4/1 0.315	16/2.6 6.4/0.8	20	EM1050H6 161.41.060 1000 lbs.	2 x 0.5	63	5	8'-10"	10'-0"	2x0.75	24	32	32	-3	4	31	7	6290	5857		
																		63	28	6515	6425
																		63	32	6835	7440
																		63	36	7040	8085
																		63	40	7355	9169
																		63	44	7578	9925
																		63	48	7915	11200
																		63	52	8170	12110
																		63	56	8450	13180
																		63	60	9030	15410
	EM1050H6 161.41.100 1100 lbs.	2 x 0.5	33	EM1050H6 161.41.100 1100 lbs.	2 x 0.5	63	6.25	10'-6"	12'-0"	2x1.0	64	32	32	-3	18	31	7	9310	16465		
																		63	68	9730	18095
																		78.75	72	10150	19575
																		78.75	76	10455	20760
																		78.75	80	10930	22620
								98.5	84	11340	24235										
								98.5	88	12195	27620										
								98.5	92	12725	29710										
								98.5	96	13445	32520										
								98.5	100	13825	34020										

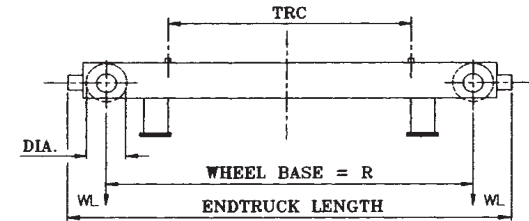
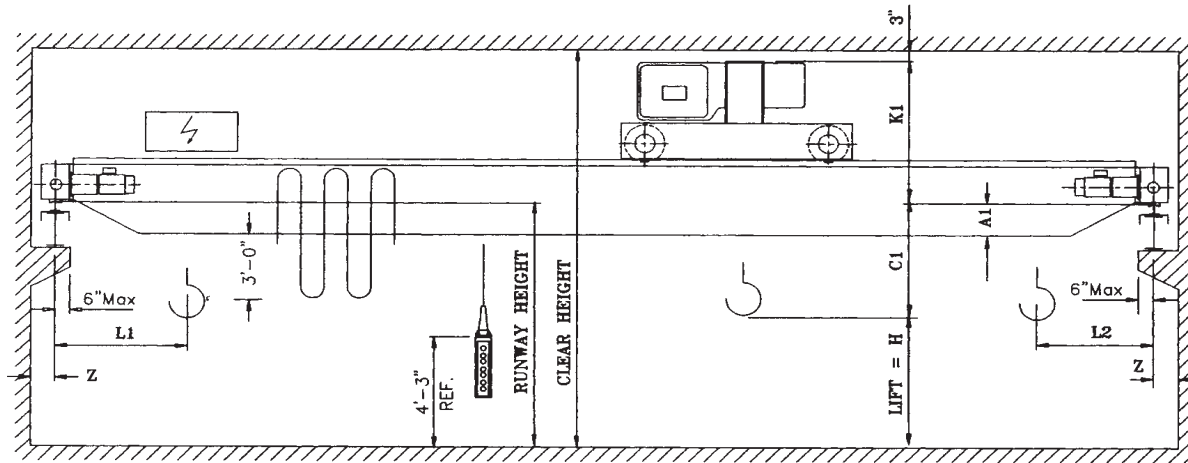


- Notes:
1. Runway electrification is standard on left side.
 2. Wheel loads do not include impact.
 3. Shipping weights include hoist and trolley.

Double Girder Crane Type ZLK2

WHEEL LOADS INDICATED WITHOUT IMPACT OR WALKWAY

Cap. Tons	Hoist			Trolley			Endtruck				Bridge							Wheel Load Lbs.	Shipping Weight Lbs.	
	Type Reeving Rope Dia.	Speed FPM HP	Lift Ft.	Type Weight	HP per Motor 80 FPM VFD	TRC In.	Wheel		HP per Motor 120 VFD	Span Ft.	L1 In.	L2 In.	C1 In.	A1 In.	K1 In.	Z In.				
							Dia. In.	Base Ft.-In.									Length Ft.-In.			Dia. In.
7.5	2063 4/1 0.4	17/2.8	20	EM2063L6 171.41.060 1400 lbs.	2 x 0.5	63	6.25	8'-10"	10'-4"	2x0.75	24	34	34	-2	6	31	7	9060	7297	
																		63	9425	8257
																		63	9675	8880
																		63	10030	10010
																		63	10260	10685
																		63	10630	11985
																		63	10875	12875
																		63	11320	14440
																		63	11550	15245
																		63	12025	17040
	2063L6 171.41.100 1445 lbs.	8.8/1.3	30	EM2063L6 171.41.100 1445 lbs.	2 x 0.5	63	8	8'-10"	10'-6"	2x1.0	52	34	34	-4	18	34	7	11320	14440	
																		63	11550	15245
																		63	12025	17040
																		63	12250	17900
																		63	12850	20080
								78.75	13215	21475										
								78.75	13615	23025										
								78.75	14035	24640										
								98.5	14340	25820										
								98.5	15420	30125										
98.5	16120	32820																		
98.5	16340	33645																		
98.5	16780	35365																		

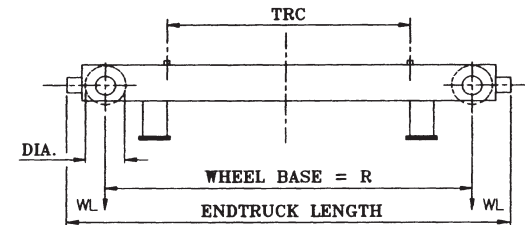
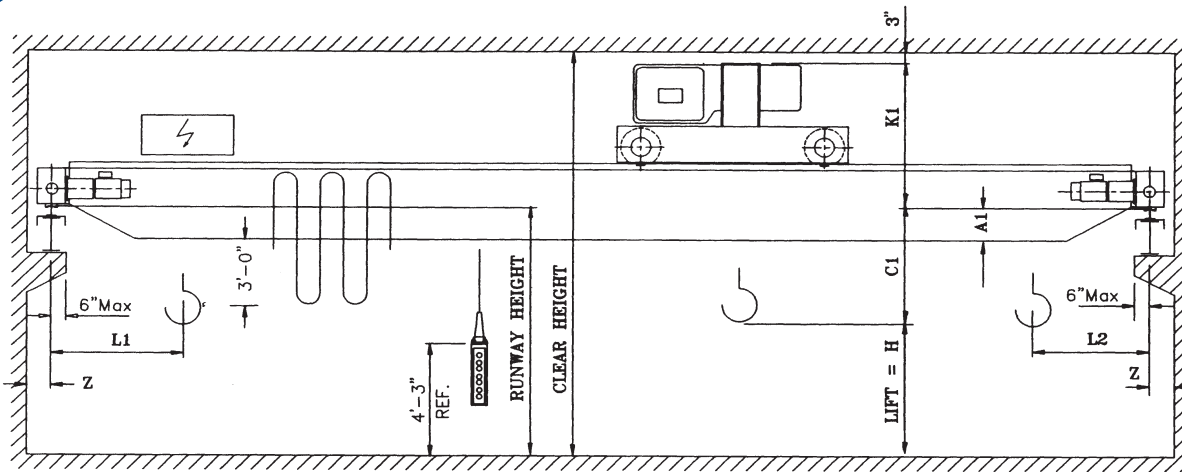


- Notes:
1. Runway electrification is standard on left side.
 2. Wheel loads do not include impact.
 3. Shipping weights include hoist and trolley.

Double Girder Crane Type ZLK3

WHEEL LOADS INDICATED WITHOUT IMPACT OR WALKWAY

Cap. Tons	Hoist		Trolley		Endtruck			Bridge							Wheel Load Lbs.	Shipping Weight Lbs.																			
	Type Reeving Rope Dia.	Speed FPM HP	Lift Ft.	Type Weight	HP per Motor 80 FPM VFD	TRC In.	Wheel		HP per Motor 120 VFD	Span Ft.	L1 In.	L2 In.	C1 In.	A1 In.			K1 In.	Z In.																	
							Dia. In.	Base Ft.-In.											Length Ft.-In.																
10	3100 4/1 .500	16/2.6 16.0/2.5	20	EM3100L6 162.41.060 2100 lbs.	2 x 0.5	63	8	9'-6"	11'-2"	2x1.0	38	38	7	-2	8	36	11670	8250																	
														28	8	36			12035	9040															
														32	10	36			12385	9950															
														36	14	36			12710	10840															
														40	14	36			13035	11865															
														44	18	36			13395	13040															
														48	18	36			13755	14260															
														52	18	36			14130	15580															
														56	20	36			14430	18198															
														60	24	36			15440	19128															
	33	EM3100L6 162.41.100 2200 lbs.	2200 lbs.	33	EM3100L6 162.41.100 2200 lbs.	2 x 0.5	63	10	10'-6"	12'-2"	2x1.0	38	38	7	-4	24	36	15895	21042																
															68	24	38			16165	22234														
															72	28	38			16665	24492														
															76	28	38			17050	27004														
															80	28	38			17480	28128														
									98.5	EM3100L6 162.41.100 2200 lbs.					2200 lbs.	33	EM3100L6 162.41.100 2200 lbs.			2 x 0.5	98.5	10	15'-0"	16'-8"	2x1.0	38	38	7	-4	28	38	17845	30174		
																													88	30	38			18580	36220
																													92	30	38			18970	37528
																													96	34	38			19535	40314
																													100	34	38			20145	43004



Notes:

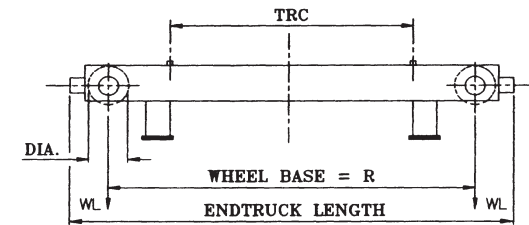
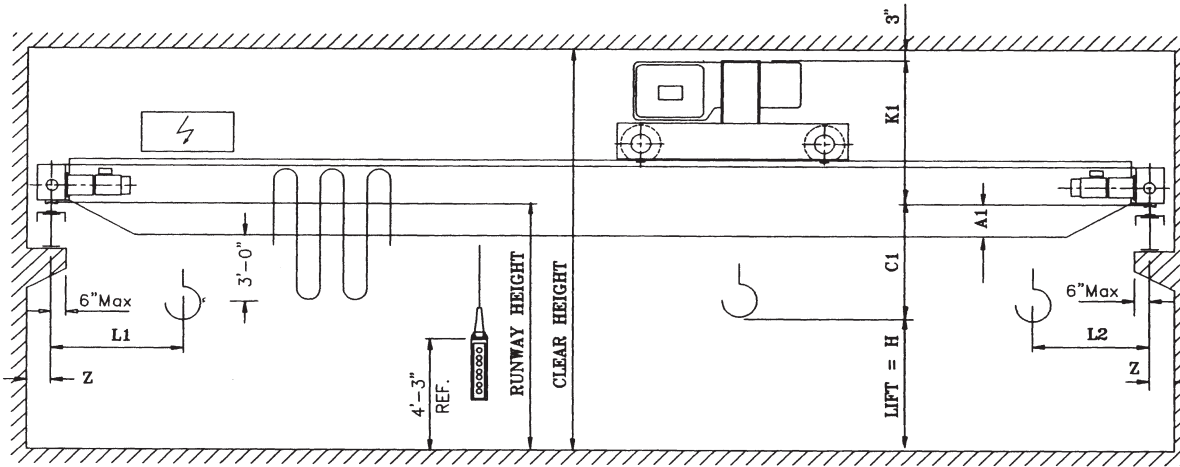
1. Runway electrification is standard on left side.
2. Wheel loads do not include impact.
3. Shipping weights include hoist and trolley.

Double Girder Crane Type ZLK4

WHEEL LOADS INDICATED WITHOUT IMPACT OR WALKWAY

Cap. Tons	Hoist			Trolley			Endtruck				Bridge							Wheel Load Lbs.	Shipping Weight Lbs.					
	Type Reeving Rope Dia.	Speed FPM HP	Lift Ft.	Type Weight	HP per Motor 80 FPM VFD	TRC In.	Wheel		Length Ft.-in.	HP per Motor 120 VFD	Span Ft.	L1 In.	L2 In.	C1 In.	A1 In.	K1 In.	Z In.							
							Dia. In.	Base Ft.-in.																
15	3125 4/1 0.5	16/2.6 16.0/2.5	20	EM3125L6 161.41.060 2150 lbs.	2 x 0.75	63	8	9'-6"	11'-2"	2x1.0	38	38	24	7	10	42	7	15792	11544					
																		28	7	10	42	7	16306	12272
																		32	5	12	42	7	16872	13562
																		36	5	12	42	7	17254	14360
																		40	5	16	42	7	17746	15774
																		44	5	16	42	7	18168	17020
																		48	5	20	42	7	18582	18336
																		52	5	20	42	7	19082	20066
																		56	5	24	42	7	19692	22290
																		60	5	24	42	7	20302	24556
	64	5	24	42	7	20598	25616																	
	68	5	28	42	7	21340	28474																	
	72	5	30	42	7	21772	30126																	
	76	5	30	42	7	22084	31312																	
	80	5	30	42	7	22788	34088																	
	84	2	34	45	8	23615	32790																	
	88	2	34	45	8	23990	34175																	
	92	2	34	45	8	24775	37160																	
	96	2	38	45	8	25450	39635																	
	100	2	38	45	8	26245	42710																	
50*			50*	EM3125L6 161.41.150 2350 lbs.		78.75	12	15'-0"	17'-4"	2x2.0			76	5	30	42	7	22084	31312					
																		80	5	30	42	7	22788	34088
																		84	2	34	45	8	23615	32790
																		88	2	34	45	8	23990	34175
																		92	2	34	45	8	24775	37160
																		96	2	38	45	8	25450	39635
98.5	2	38	45	8	26245	42710																		

* For 50 ft. lift, minimum TRC = 98.50 in.



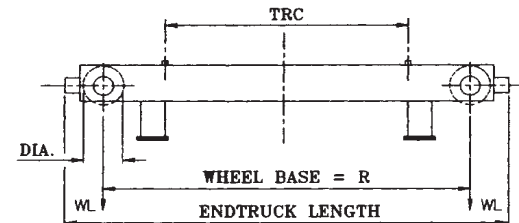
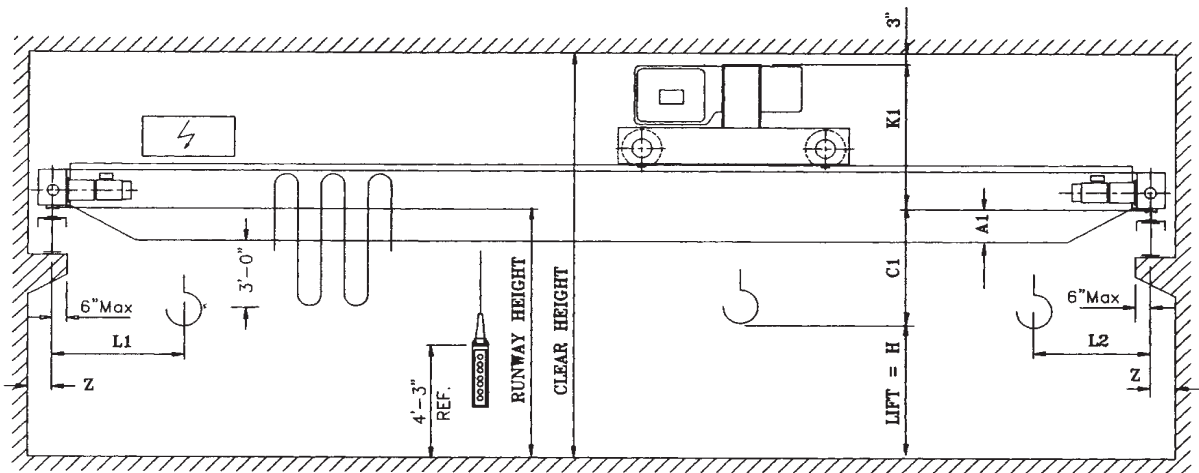
- Notes:
1. Runway electrification is standard on left side.
 2. Wheel loads do not include impact.
 3. Shipping weights include hoist and trolley.

Double Girder Crane Type ZLK5

WHEEL LOADS INDICATED WITHOUT IMPACT OR WALKWAY

Cap. Tons	Hoist			Trolley			Endtruck				Bridge							Wheel Load Lbs.	Shipping Weight Lbs.
	Type Reeving Rope Dia.	Speed FPM HP	Lift Ft.	Type Weight	HP per Motor 80/20 FPM VFD	TRC In.*	Wheel		Length Ft.-In.	HP per Motor 120 VFD	Span Ft.	L1 In.	L2 In.	C1 In.	A1 In.	K1 In.	Z In.		
							Dia. In.	Base Ft.-In.											
20	3188 6/1 0.5	10.5/1.6	13	EM3188L6 101.61.040 2500 lbs.	2 x 0.5	63	12	10'-6"	12'-10"	2x2.0	38	38	7	55	8	10	24824	13786	
																10	25652	14892	
																14	26540	16842	
																14	27112	17868	
																18	27786	19600	
																20	28252	20696	
		20	29302	24270															
		20	29728	25472															
		24	30378	27660															
		24	30916	29462															
		28	31596	31892															
		28	32002	33274															
	32	32832	36394																
	32	33534	39040																
	32	34482	42690																
	32	35426	46364																
	36	35692	47330																
	36	36692	51260																
	36	37738	55384																
	36	38884	59922																
				33*	EM3188L6 101.61.100 2992 lbs.		78.75	16	12'-6"	14'-10"	2x3.0						72	32832	36394
							76										33534	39040	
							80										34482	42690	
							84										35426	46364	
88							35692										47330		
92							36692										51260		
96		37738	55384																
100		38884	59922																
							98.5		15'-0"	17'-4"						36	36692	51260	
							98.5									37738	55384		
							98.5									38884	59922		

* For 33 ft. lift, minimum TRC =98.50 in.



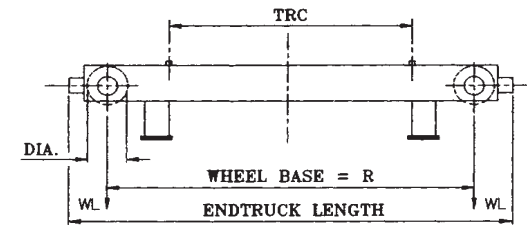
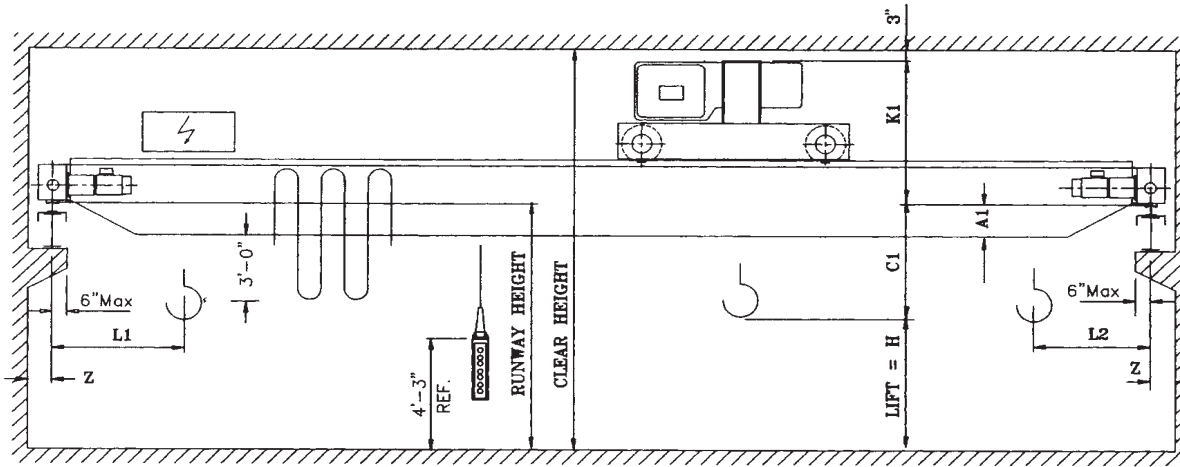
- Notes:
1. Runway electrification is standard on left side.
 2. Wheel loads do not include impact.
 3. Shipping weights include hoist and trolley.

Double Girder Crane Type ZLK6

WHEEL LOADS INDICATED WITHOUT IMPACT OR WALKWAY

Cap. Tons	Hoist			Trolley			Endtruck			Bridge								Wheel Load Lbs.	Shipping Weight Lbs.
	Type Reeving Rope Dia.	Speed FPM HP	Lift Ft.	Type Weight	HP per Motor 80/20 FPM VFD	TRC In.*	Wheel			HP per Motor 120 VFD	Span Ft.	L1 In.	L2 In.	C1 In.	A1 In.	K1 In.	Z In.		
							Dia. In.	Base Ft.-In.	Length Ft.-In.										
25	5240 6/1 .625	9.0/1.5	13	EM5240L6 092.61.040 4450 lbs.	2 x 0.75	63	12	10'-6"	12'-10"	2x2.0	24	38	38	7	55	8	10	24824	13786
											28						10	25652	14892
											32						14	26540	16842
											36						14	27112	17868
											40						18	27786	19600
											44						20	28252	20696
		48	20	29302	24270														
		52	20	29728	25472														
		56	24	30378	27660														
		60	24	30916	29462														
		64	28	31596	31892														
		68	28	32002	33274														
	72	32	32832	36394															
	76	32	33534	39040															
	80	32	34482	42690															
	84	32	35426	46364															
	88	36	35692	47330															
	92	36	36692	51260															
	96	36	37738	55384															
	100	36	38884	59922															
	33*	24.2/3.9	33*	EM5240L6 092.61.110 5192 lbs.	2 x 0.75	98.5	16	12'-6"	15'-2"	2x3.0	72	38	38	7	55	8	32	32832	36394
											76						32	33534	39040
											80						32	34482	42690
								84	32	35426	46364								
88								36	35692	47330									
92								36	36692	51260									
96	36	37738	55384																
98.5	36	38884	59922																

* For 33 ft. lift, minimum TRC =98.50 in.



Notes:

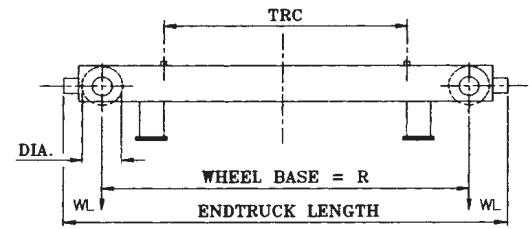
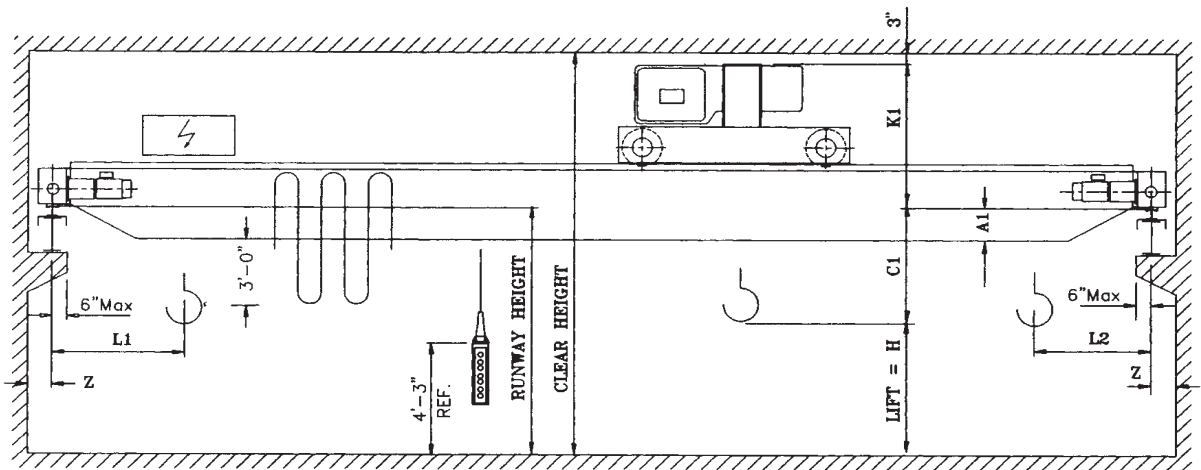
1. Runway electrification is standard on left side.
2. Wheel loads do not include impact.
3. Shipping weights include hoist and trolley.

Double Girder Crane Type ZLK7

WHEEL LOADS INDICATED WITHOUT IMPACT OR WALKWAY

Cap. Tons	Hoist			Trolley			Endtruck				Bridge							Wheel Load Lbs.	Shipping Weight Lbs.	
	Type Reeving Rope Dia.	Speed FPM HP	Lift Ft.	Type Weight	HP per Motor 80/20 FPM VFD	TRC In.*	Wheel		Length Ft.-In.	HP per Motor 120 VFD	Span Ft.	L1 In.	L2 In.	C1 In.	A1 In.	K1 In.	Z In.			
							Dia. In.	Base Ft.-In.												
30	5300 6/1 0.625	9.0/1.5 24.2/3.9	13	EM5300L6 091.61.040 4450 lbs.	2 x 0.75	63	12	10'-6"	12'-10"	2x2.0	24	46	46	7	10	55	8	30268	17539	
						63									28			10	31134	18624
						63									32			12	32100	20012
						63									36			12	32918	21275
						63									40			16	33724	22897
						63									44			20	34494	24769
						63									48			20	35035	25876
						63									52			24	35734	28522
						63									56			24	36340	30270
						63									60			28	36904	31959
			63	64	32	37462	33588													
			63	68	32	38238	35176													
			78.75	72	36	39129	41598													
			78.75	76	36	39660	43519													
			78.75	80	36	41072	46831													
			78.75	84	36	41924	49851													
			78.75	88	36	42199	52513													
			98.5	92	38	42480	53716													
			98.5	96	38	43530	57566													
			98.5	100	38	44623	61596													
33*	EM5300H6 091.61.110 5200 lbs.					20	13'-6"	16'-6"	2x5.0	76	46	46	7	36	55	8	41072	46831		
80										41924				49851						
84										42199				52513						
88										42480				53716						
92										43530				57566						
96										44623				61596						

* For 33 ft. lift, minimum TRC =98.50 in.



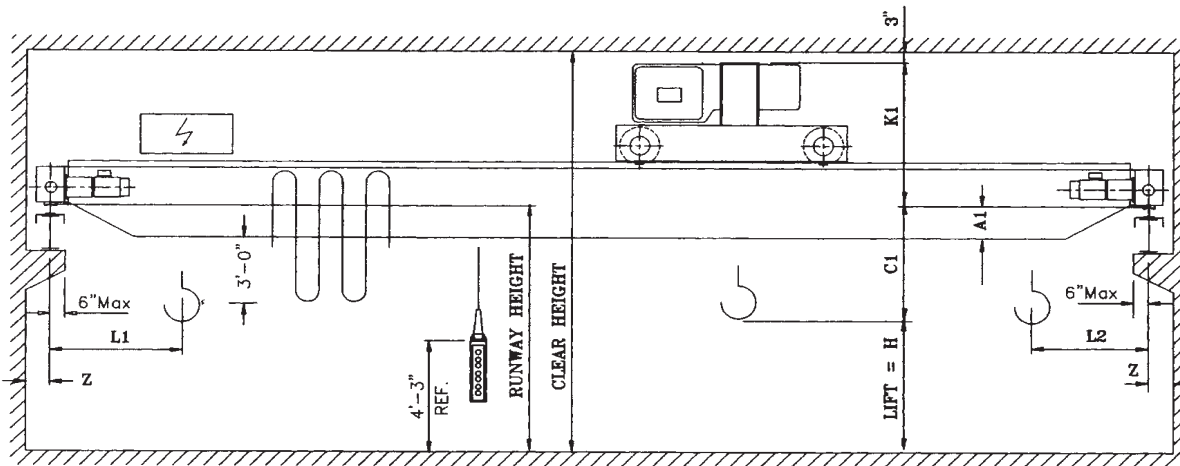
Double Girder Crane Type ZLK8

- Notes:
1. Runway electrification is standard on left side.
 2. Wheel loads do not include impact.
 3. Shipping weights include hoist and trolley.

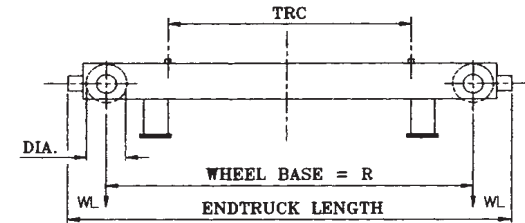
WHEEL LOADS INDICATED WITHOUT IMPACT OR WALKWAY

Cap. Tons	Hoist			Trolley			Endtruck			Bridge							Wheel Load Lbs.		
	Type Reeving Rope Dia.	Speed FPM HP	Lift Ft.	Type Weight	HP per Motor 80/20 FPM VFD	TRC In.*	Wheel		Length Ft.-In.	HP per Motor 120 VFD	Span Ft.	L1 In.	L2 In.	C1 In.	A1 In.	K1 In.		Z In.	
							Dia. In.	Base Ft.-In.											
35	6360 6/1 0.75	9.0/1.5	13	EM6360L6 091.61.040 4750 lbs.	2 x 0.75	63	16	10'-6"	13'-2"	2x3.0	24	46	46	6	12	56	8	37350	
																		28	38349
																		32	39247
																		36	39996
																		40	40847
		44	41587																
		48	42878																
		52	43393																
		56	44196																
		60	44938																
	64	45606																	
	68	46156																	
	72	47037																	
	76	47953																	
	80	48569																	
	84	48953																	
	88	49936																	
	92	50571																	
	96	51617																	
	100	52703																	
	6360 6/1 0.75	24.2/3.9	22	EM6360L6 191.61.060 5168 lbs.	2 x 0.75	63	20	10'-6"	13'-6"	2x5.0	72	46	46	3	20	59	8	42878	
																		76	43393
																		80	44196
																		84	44938
																		88	45606
	92	46156																	
	96	47037																	
	100	47953																	
				33*	EM6360L6 091.61.100 7612 lbs.		78.75	20	13'-6"	16'-6"	2x5.0	80	46	46	3	28	59	8	48569
																			84
88																			49936
92																			50571
96																			51617
100	52703																		

* For 33 ft. lift, minimum TRC =98.50 in.



Double Girder Crane Type ZLK9

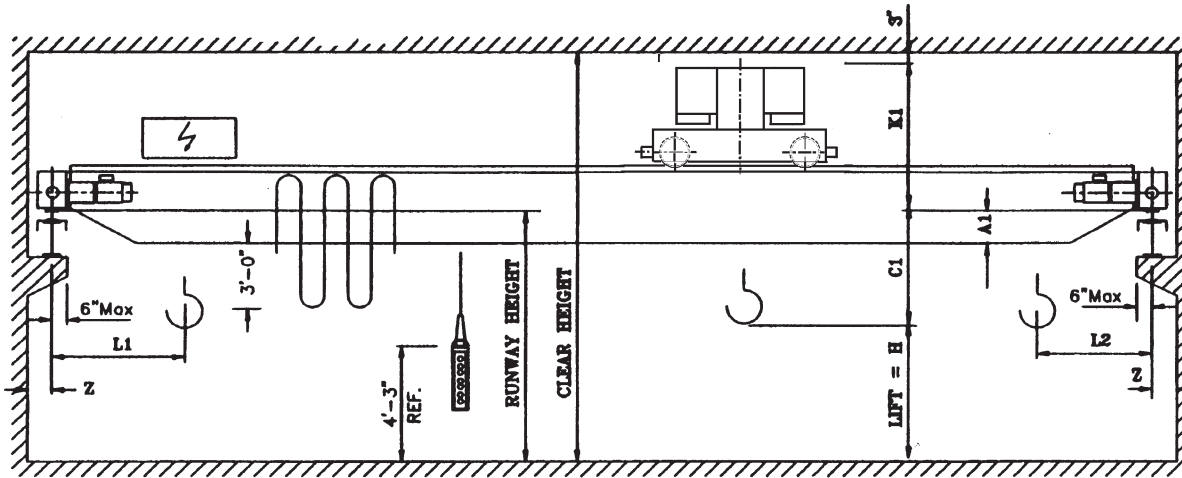


- Notes:
1. Runway electrification is standard on left side.
 2. Wheel loads do not include impact.
 3. Shipping weights include hoist and trolley.

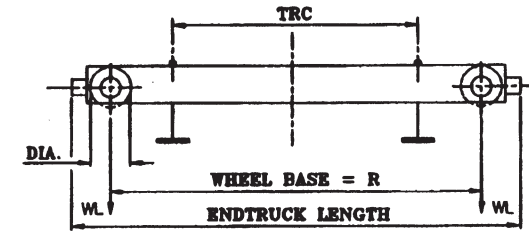
WHEEL LOADS INDICATED WITHOUT IMPACT OR WALKWAY

Cap. Tons	Hoist			Trolley		Endtruck			Bridge							Wheel Load Lbs.	Shipping Weight Lbs.			
	Type Reeving Rope Dia.	Speed FPM HP	Lift Ft.	Type Weight	HP per Motor 80/20 FPM VFD	TRC In.*	Wheel			HP per Motor 120 VFD	Span Ft.	L1 In.	L2 In.	C1 In.	A1 In.			K1 In.	Z In.	
							Dia. In.	Base Ft.-In.	Length Ft.-In.											
40	6360 6/1 0.75	9.0/1.5	13	EM6360L6 091.61.040 4750 lbs.	2 x 0.75	63	16	10'-6"	13'-2"	2x3.0	24	48	48	6	16	56	8	38248	18767	
						63					28							6	39636	19842
						63					32							6	40987	24290
						63					36							6	42090	26162
						78.75					40							3	43053	27885
		78.75		44		3	43993	30026												
		78.75		48		3	48294	31420												
		78.75		52		3	49286	34369												
		78.75		56		3	50040	36511												
		98.5		60		3	51095	39976												
	98.5	64	3	51681	41661															
	98.5	68	3	52600	44745															
	98.5	72	3	53170	46513															
	98.5	76	3	54582	51619															
	98.5	80	3	55491	54911															
	98.5	84	3	56560	58807															
	98.5	88	3	57324	61525															
	98.5	92	3	58204	64729															
	98.5	96	3	59360	69058															
	98.5	100	3	60552	73567															
			33*	EM6360L6 091.61.100 7612 lbs.		98.5	25	15'-0"	18'-10"	2 x 7.5			3	36	59		59360	69058		
						98.5							3	36	59		60552	73567		

* For 33 ft. lift, minimum TRC = 98.50 in.



Double Girder Crane Type ZLK11



- Notes:
1. Runway electrification is standard on left side.
 2. Wheel loads do not include impact.
 3. Shipping weights include hoist and trolley.

WHEEL LOADS INDICATED WITHOUT IMPACT OR WALKWAY

Cap. Tons	Hoist			Trolley			Endtruck			Bridge								Wheel Load Lbs.	Shipping Weight Lbs.	
	Type Reeving Rope Dia.	Speed FPM	Lift Ft.	Type Weight	HP per Motor 80/20 FPM	TRC In.*	Wheel		Length Ft.-In.	HP per Motor 120 VFD	Span Ft.	L1 In.	L2 In.	C1 In.	A1 In.	K1 In.	Z In.			
							Dia. In.	Base Ft.-In.												
50	6500 8/2 .625	16/2.6	20	EM6500L6 141.82.060 7000 lbs.	2x1.80/.30	98.5	20	18'-0"	2x3.0	24	48	48	5	16	64	10	58058	25886		
									2x3.0	28							55944	26021		
									2x3.0	32							57204	27782		
									2x3.0	36							58400	30102		
									2x3.0	40							59320	31647		
									2x3.0	44							60153	33292		
			50*	2x30.6/4.7	33	EM6500L6 141.82.100 7297 lbs.	2x1.80/.30	98.5	25	15'-0"	2x3.0	48	48	48	-10	20	79	10	61155	35922
											2x3.0	52							62440	39884
											2x3.0	56							63167	41783
											2x3.0	60							64436	45982
											2x5.0	64							65138	48034
											2x5.0	68							66345	52181
	50*	2x30.6/4.7			50*	EM6500L6 141.82.150 7760 lbs.	2x1.80/.30	98.5	25	19'-2"	2x5.0	72	48	48	-10	24	79	10	67036	54357
											2x5.0	76							68142	58238
											2x5.0	80							69036	61324
											2x5.0	84							70127	64533
											2x5.0	88							70855	67745
											2x5.0	92							72300	71543
									2x5.0	96							73295	76830		
									2x5.0	100								74582	81642	

* For 50 ft. lift, minimum TRC = 98.50 in.