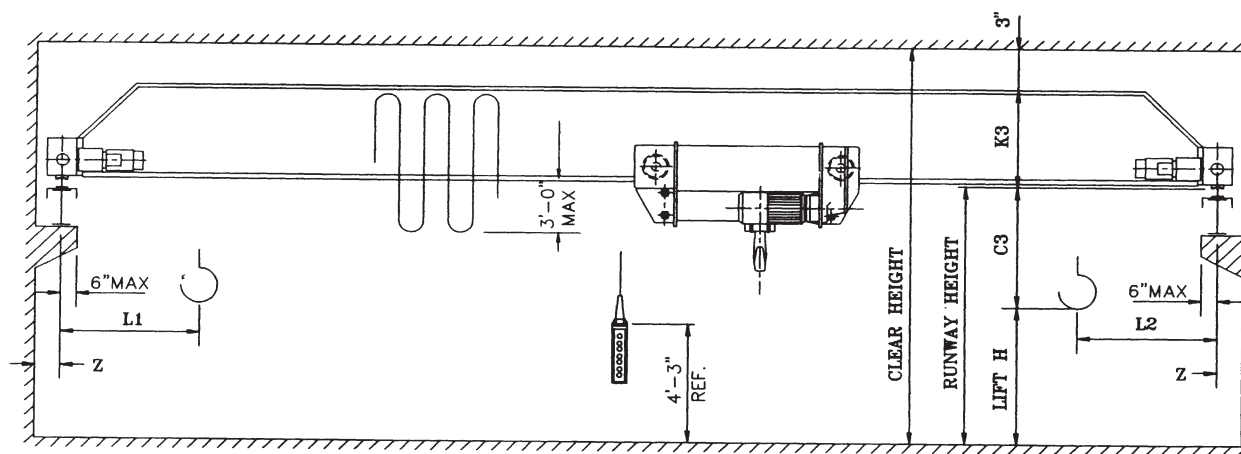


ELK

Top Running

Single Box Girder

Cranes

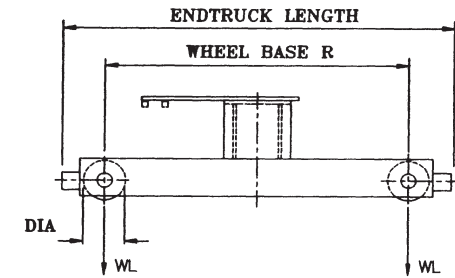
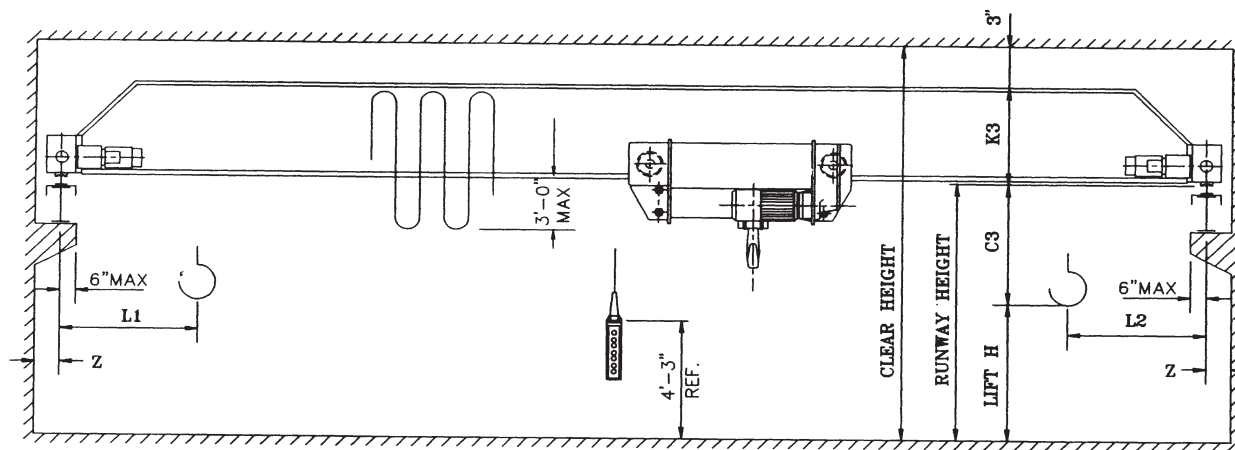


Notes:

1. Runway electrification is standard on left side.
2. Wheel loads do not include impact.
3. The hook approach may be affected by the location of the runway electrification system.

Single Girder Crane Type ELK1

Cap. Tons	Hoist		Lift Ft.	Trolley		Endtruck				Bridge						Wheel Load Lbs.	Shipping Weight Lbs.
	Type Reeving Rope Dia.	Speed FPM HP		Type Weight	HP per Motor 65/16 FPM	Wheel		Length Ft.-In.	HP per Motor 120 FPM VFD	Span Ft.	L1 In.	L2 In.	C3 In.	K3 In.	Z In.		
						Dia. In.	Base Ft.-In.										
2	820 4/1 0.25	16/2.6 4/0.59	20	EM820L6 163.41.060 620	.29/.07	5	6'-3"	7'-5"	2x.75	24	34	26	15	20	6	2700	2970
																28	3170
																32	3470
																36	3970
																40	4270
																44	4870
																48	5570
																52	5770
	6.25	10'-6"	11'-10"	2x1.0	64	36	27	16	22	6	3500	5570					
											28	5770					
											28	6070					
											32	6870					
											32	7370					
											32	7600					
											36	10770					
											36	11270					
40	11970																

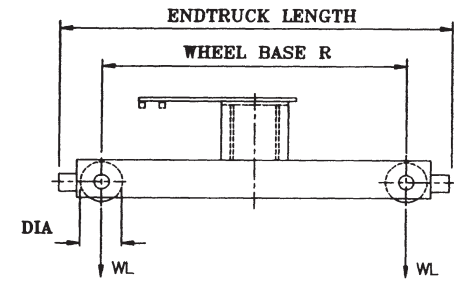
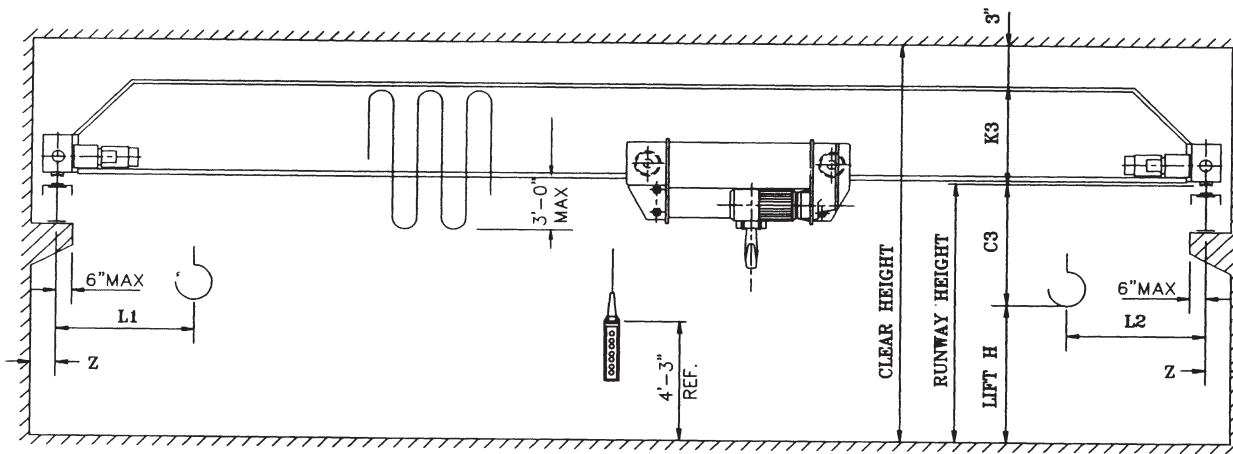


Notes:

1. Runway electrification is standard on left side.
2. Wheel loads do not include impact.
3. The hook approach may be affected by the location of the runway electrification system.

Single Girder Crane Type ELK2

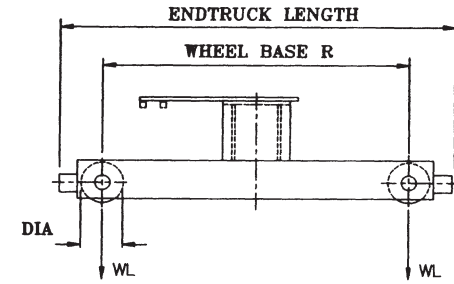
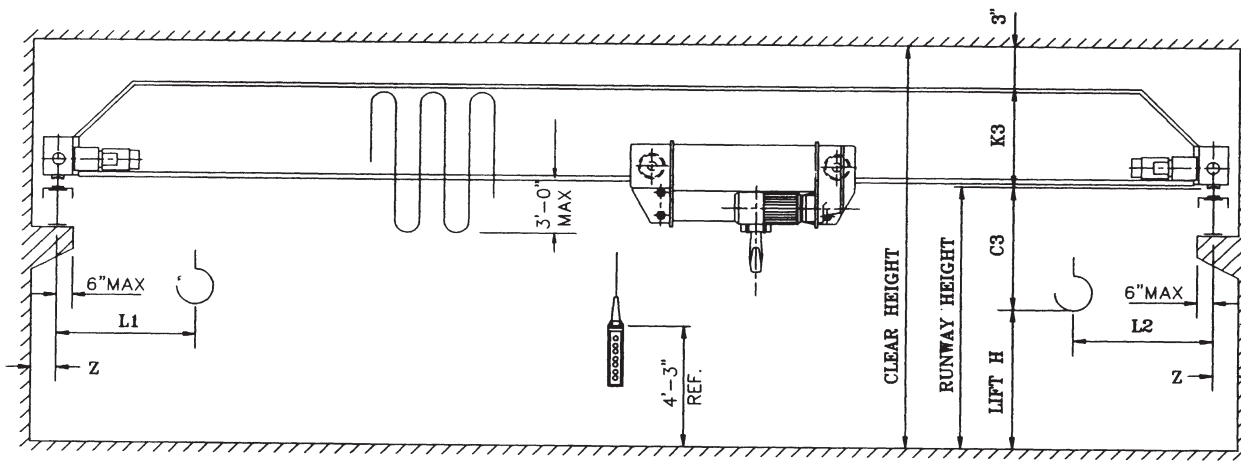
Cap. Tons	Hoist			Trolley		Endtruck				Bridge						Wheel Load Lbs.	Shipping Weight Lbs.				
	Type Reeving	Speed FPM	Lift Ft.	Type Weight	HP per Motor	Wheel		Length Ft.-In.	HP per Motor 120 FPM VFD	Span Ft.	L1 In.	L2 In.	C3 In.	K3 In.	Z In.						
	Rope Dia.	HP	FPM	65/16 FPM	Dia. In.	Base Ft.-In.															
3	832 4/1 0.25	16/2.6 4.0/0.59	20	EM832L6 162.41.060 620	0.29/0.07	5	6'-3"	7'-5"	2x0.75	34	26	15	20	6	3600	3070					
																	28	3700	3370		
																	32	22	6	3800	3870
																	36	22	6	4000	4170
																	40	22	6	4100	4770
																	44	24	6	4300	5470
																	48	28	6	4500	5670
																	52	28	6	4600	5970
						56	28	6									4800	6770			
						60	32	6									5000	7270			
						64	32	6									5100	7570			
						68	32	6									5900	10670			
						72	34	7									6000	11170			
						76	36	7									6200	11870			
						80	40	7									6340	12670			



- Notes:
1. Runway electrification is standard on left side.
 2. Wheel loads do not include impact.
 3. The hook approach may be affected by the location of the runway electrification system.

Single Girder Crane Type ELK3

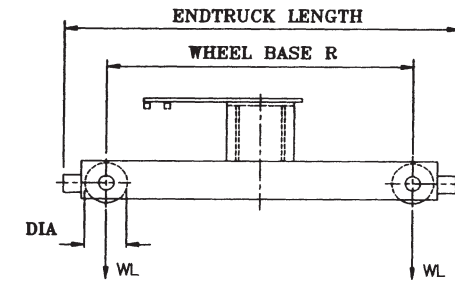
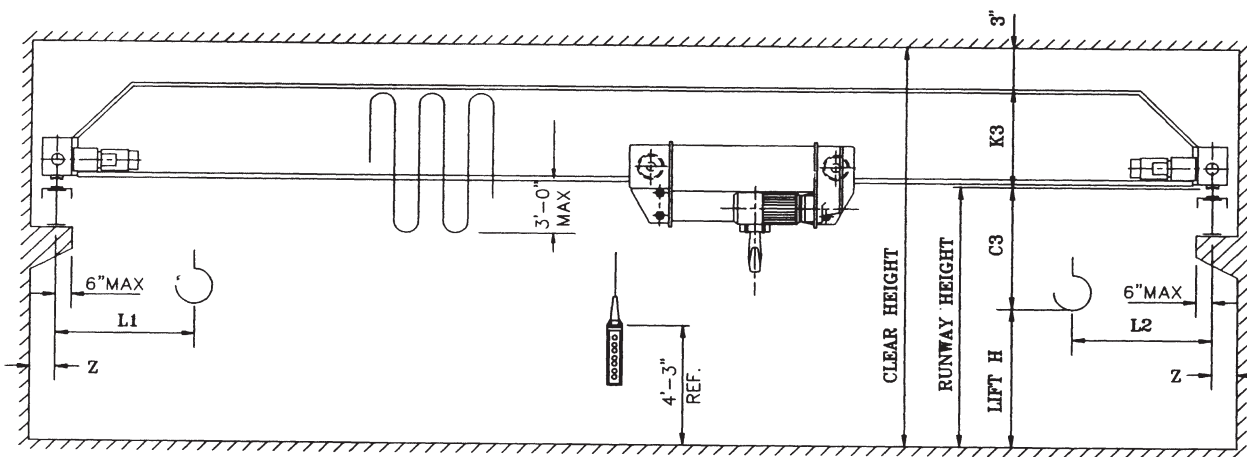
Cap. Tons	Hoist			Trolley		Endtruck				Bridge						Wheel Load Lbs.	Shipping Weight Lbs.
	Type Reeving Rope Dia.	Speed FPM HP	Lift Ft.	Type Weight	HP per Motor 65/16 FPM	Wheel			HP per Motor 120 FPM VFD	Span Ft.	L1 In.	L2 In.	C3 In.	K3 In.	Z In.		
						Dia. In.	Base Ft.-In.	Length Ft.-In.									
5	1050 4/1 0.4	16/2.6	20	EM1050L6 161.41.060 775 lbs.	0.29/0.07	5	6'-3"	7'-5"	2x.75	24	36	28	18	20	6	5500	3550
										28				20	6	5700	3750
										32				20	6	5900	4350
										36				22	6	6000	4750
										40				24	6	6300	5150
										44				28	6	6500	6150
										48				28	6	6600	6250
										52				28	6	6700	6650
	56	32	6	6900	7550												
	60	32	6	7000	8050												
	64	34	6	7200	8750												
	68	36	6	7900	11450												
	72	36	7	8100	12250												
	76	36	7	8300	12750												
	80	40	7	8600	14050												
				33	EM1050L6 161.41.100 835 lbs.		6.25	8'-6"	9'-10"	2x1.0	64				34	6	7200
68											36				6	7900	11450
72											36				7	8100	12250
76											36				7	8300	12750
80											40				7	8600	14050



- Notes:
1. Runway electrification is standard on left side.
 2. Wheel loads do not include impact.
 3. The hook approach may be affected by the location of the runway electrification system.

Single Girder Crane Type ELK4

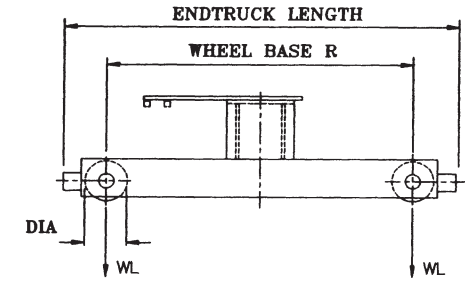
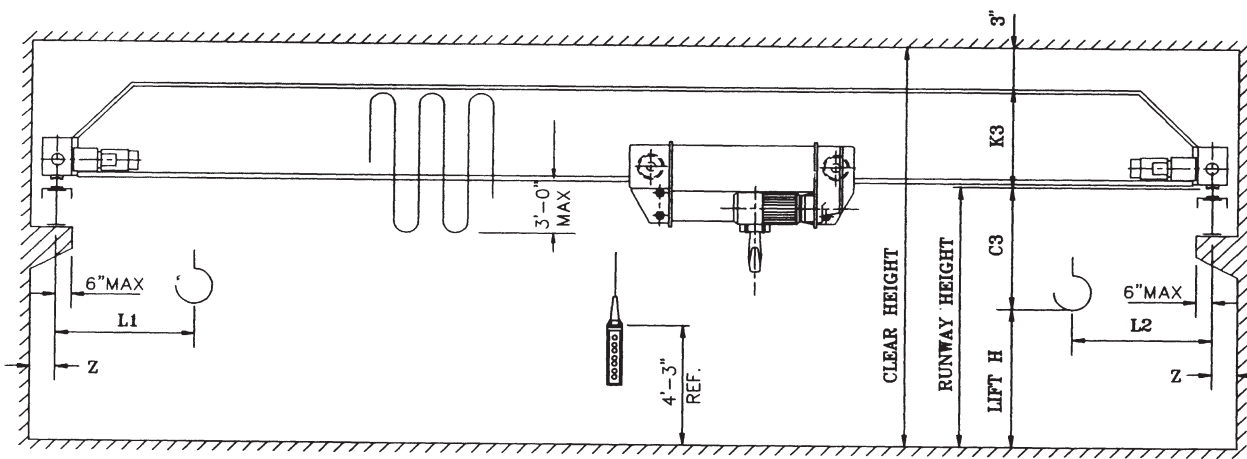
Cap. Tons	Hoist			Trolley		Endtruck			Bridge						Wheel Load Lbs.	Shipping Weight Lbs.	
	Type Reeving Rope Dia.	Speed FPM HP	Lift Ft.	Type Weight	HP per Motor 65/16 FPM	Wheel		HP per Motor 120 FPM VFD	Span Ft.	L1 In.	L2 In.	C3 In.	K3 In.	Z In.			
						Dia. In.	Base Ft.-In.										Length Ft.-In.
7.5	2063 4/1 0.4	16/2.6 8.8/1.3	20	EM2063L6 171.41.060 1200 lbs.	0.40/0.10	6.25	6'-3"	7'-10"	2x.75	42	32	19	22	6	8130	5350	
													24	6	8340	5750	
													24	6	8555	6280	
													24	6	8790	6980	
													28	6	8950	7420	
													28	6	9177	8150	
													32	6	9395	8890	
													32	6	9640	9810	
	33	EM2063L6 171.41.100 1320 lbs.	0.40/0.10	6.25	7'-6"	8'-10"	2x.75	42	32	19	34	6	9945	10925			
											34	6	10135	11592			
											36	7	10550	13184			
											40	7	10750	13917			
											40	8	11176	15550			
											40	8	12000	19100			
											40	8	12275	19875			
											10	EM2063L6 171.41.100 1320 lbs.	0.40/0.10	8	8'-6"	10'-2"	2x1.0
68	7	10750	13917														
72	8	11176	15550														
76	8	12000	19100														



- Notes:
1. Runway electrification is standard on left side.
 2. Wheel loads do not include impact.
 3. The hook approach may be affected by the location of the runway electrification system.

Single Girder Crane Type ELK5

Cap. Tons	Hoist			Trolley		Endtruck				Bridge						Wheel Load Lbs.	Shipping Weight Lbs.
	Type Reeving Rope Dia.	Speed FPM HP	Lift Ft.	Type Weight	HP per Motor 65/16 FPM	Wheel		Length Ft.-In.	HP per Motor 120 FPM VFD	Span Ft.	L1 In.	L2 In.	C3 In.	K3 In.	Z In.		
						Dia. In.	Base Ft.-In.										
10	3100 4/1 0.5	16/2.6	20	EM3100L6 162.41.060 2150 lbs.	0.59/0.14	8	6'-3"	7'-11"	2x1.0	42	34	7	22	22	10700	5600	
													28	24			
													32	24			
													36	28			
		40	28														
		44	32														
		48	32														
		52	34														
	56	34															
	60	36															
	64	36															
	68	38															
	72	40															
	76	40															
	80	40															
				33	EM3100L6 162.41.100 2365		10	8'-6"	10'-2"					24	38	13800	13800
24														40			
24														40			
24														40			
24								40									
24								40									
24								40									
24								40									



- Notes:
1. Runway electrification is standard on left side.
 2. Wheel loads do not include impact.
 3. The hook approach may be affected by the location of the runway electrification system.

Single Girder Crane Type ELK6

Cap. Tons	Hoist			Trolley		Endtruck				Bridge						Wheel Load Lbs.	Shipping Weight Lbs.
	Type Reeving Rope Dia.	Speed FPM HP	Lift Ft.	Type Weight	HP per Motor 80/20 FPM	Wheel		Length Ft.-In.	HP per Motor 120 FPM VFD	Span Ft.	L1 In.	L2 In.	C3 In.	K3 In.	Z In.		
						Dia. In.	Base Ft.-In.										
15	3136 4/1 0.5	16/2.6 16/2.5	20	EM3136L6 161.41.060 2150	1.1/0.235	8	6'-3"	7'-11"	2x1.0	32	27	23	7	26	14695	7408	
															28	15034	7974
															32	15398	8840
															36	15664	9448
															40	16012	10434
															44	16238	10882
															48	16616	12350
															52	17058	13894
															56	17424	15178
						60	17662	15972									
						64	18178	17902									
						68	18420	18744									
						72	18262	20042									
						12	10'-6"	12'-10"	2x1.5	76	19086	21208					
										80	19524	22870					