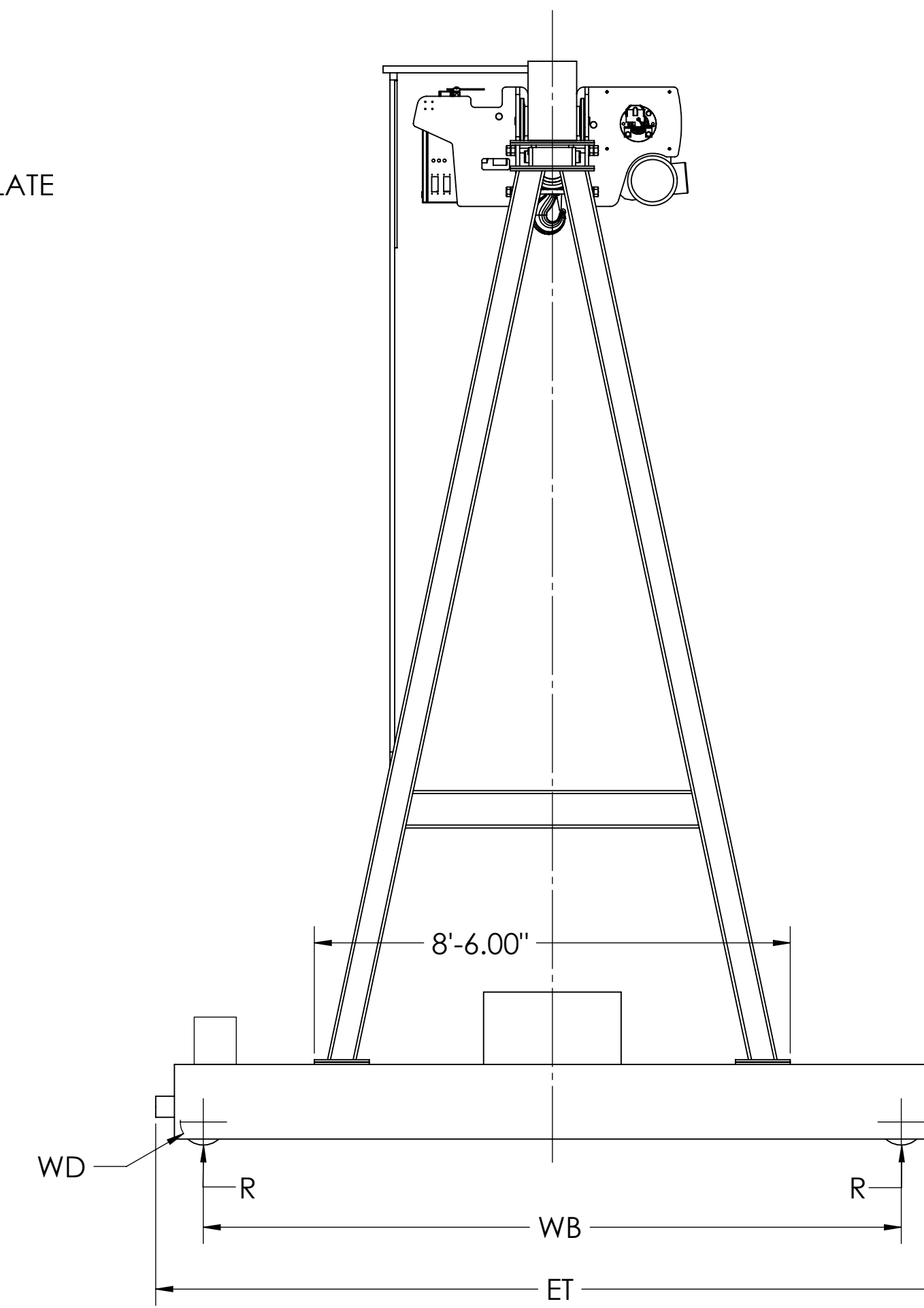
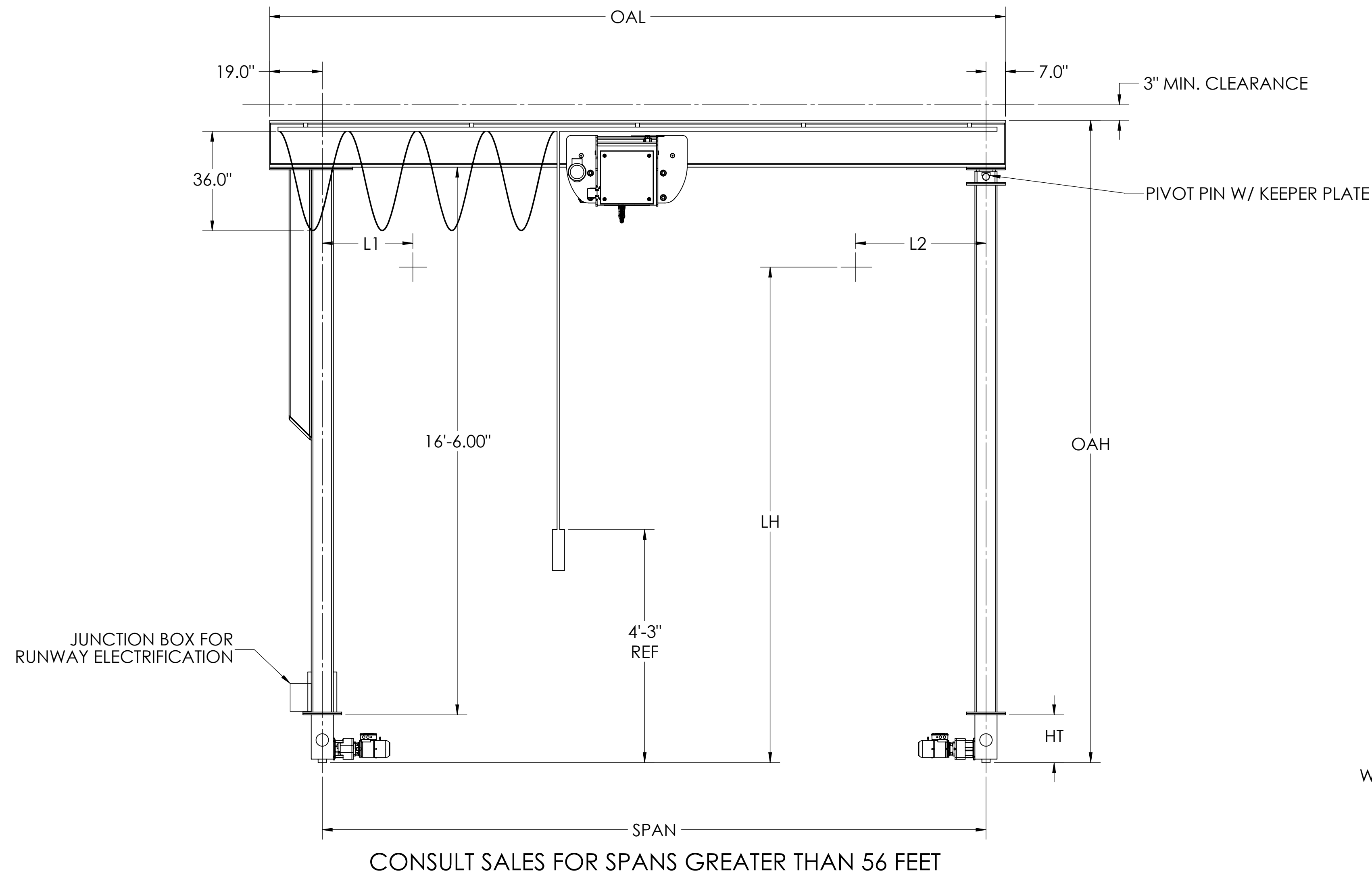
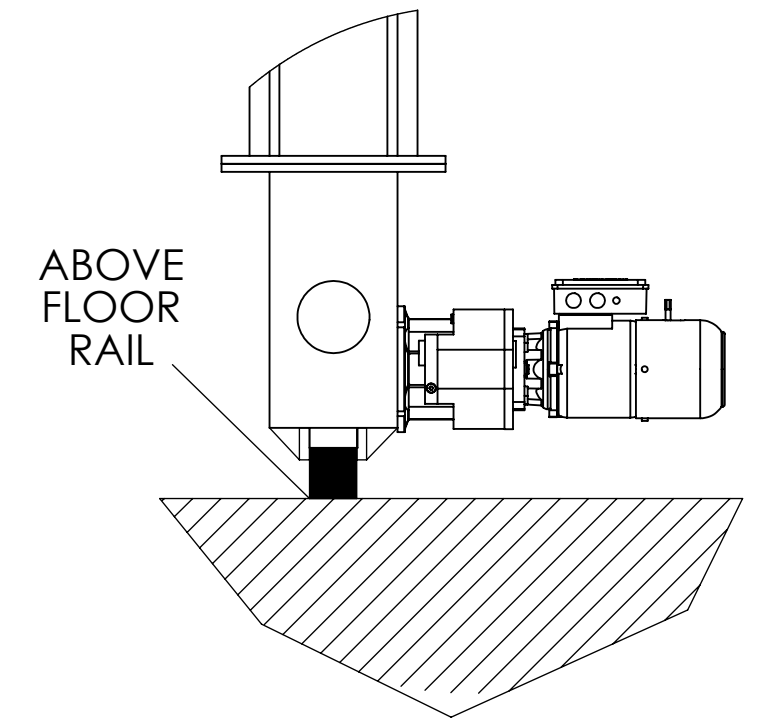


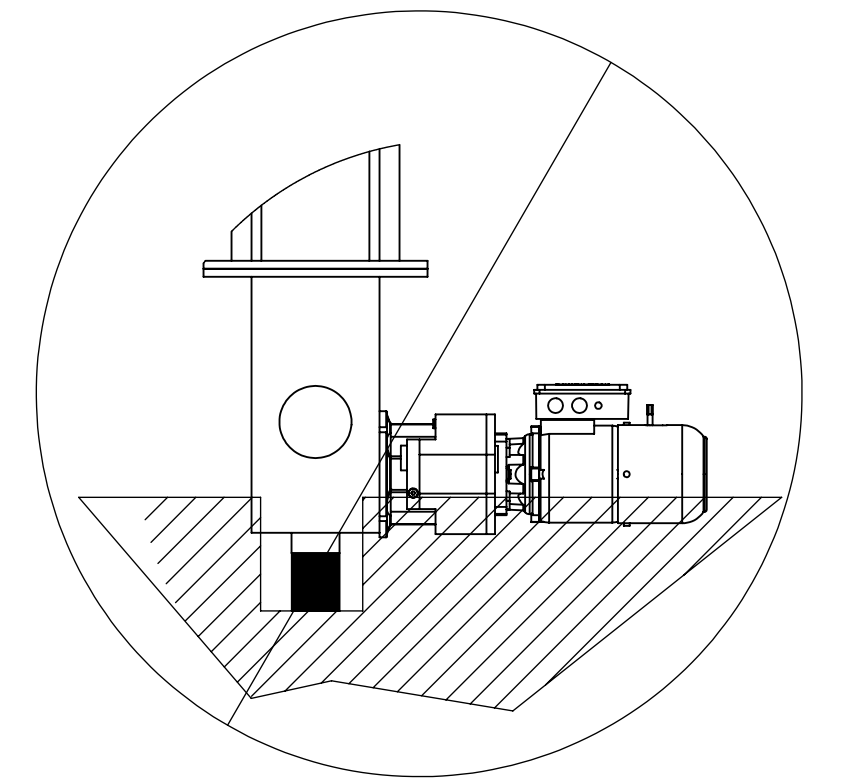
- NOTE:
 1. TORQUE ϕ 3/4-10 A325 FASTENERS TO 350-425 FT-LBS
 2. RUNWAY ELECTRIFICATION IS STANDARD ON LEFT SIDE
 3. WHEEL LOADS DUE NOT INCLUDE IMPACT



GANTRY RAIL DETAIL



CLEARANCE NOTE: PATH OF ENDTRUCK AND DRIVE MUST BE FREE OF OBSTACLES. RAIL SHOULD BE ABOVE FLOOR.



UNLESS PROPERLY DESIGNED, A BELOW FLOOR RAIL WILL CAUSE INTERFERENCE WITH ENDTRUCK AND DRIVE. PLEASE CONTACT SALES WITH EXACT FLOOR AND RAIL DETAILS.

SINGLE GIRDER GANTRY CRANE - TYPE ELG-3

HOIST					ENDTRUCK - HSG						SYSTEM								
CAPACITY TONS	TYPE REEVING	SPEED FPM HP	TROLLEY HP	WEIGHT LBS	WHEEL DIAMETER 'WD'	SPEED FPM HP	WHEEL BASE 'WB'	LENGTH 'ET'	HEIGHT 'HT'	WT / EACH LBS	LIFT 'LH'	L1	L2	SPAN FT	HEIGHT 'OAH'	LENGTH 'OAL'	WHEEL LOAD 'R' LBS	SHIPPING WEIGHT LBS	
3	EM800E 4/1	16/2.6	0.33	680	5"	120	12'-6"	13'-6"	10"	800	15'-5"	24"	32"	20	18'-8"	22'-2"	4770	5310	
														24	18'-8"	26'-2"	4820	5540	
		28												18'-8"	30'-2"	4880	5770		
		32												18'-8"	34'-2"	4940	6000		
		36												18'-8"	38'-2"	4990	6230		
		40												18'-10"	42'-2"	5360	7670		
		44												18'-10"	46'-2"	5440	8020		
		48												18'-10"	50'-2"	5530	8360		
		52												19'-1"	54'-2"	5950	10050		
		56												19'-1"	58'-2"	6060	10500		

PROPERTY OF EMH INC. THIS DRAWING IS CONFIDENTIAL AND IT OR ANY COPIES THEREOF SHALL BE RETURNED UPON REQUEST.