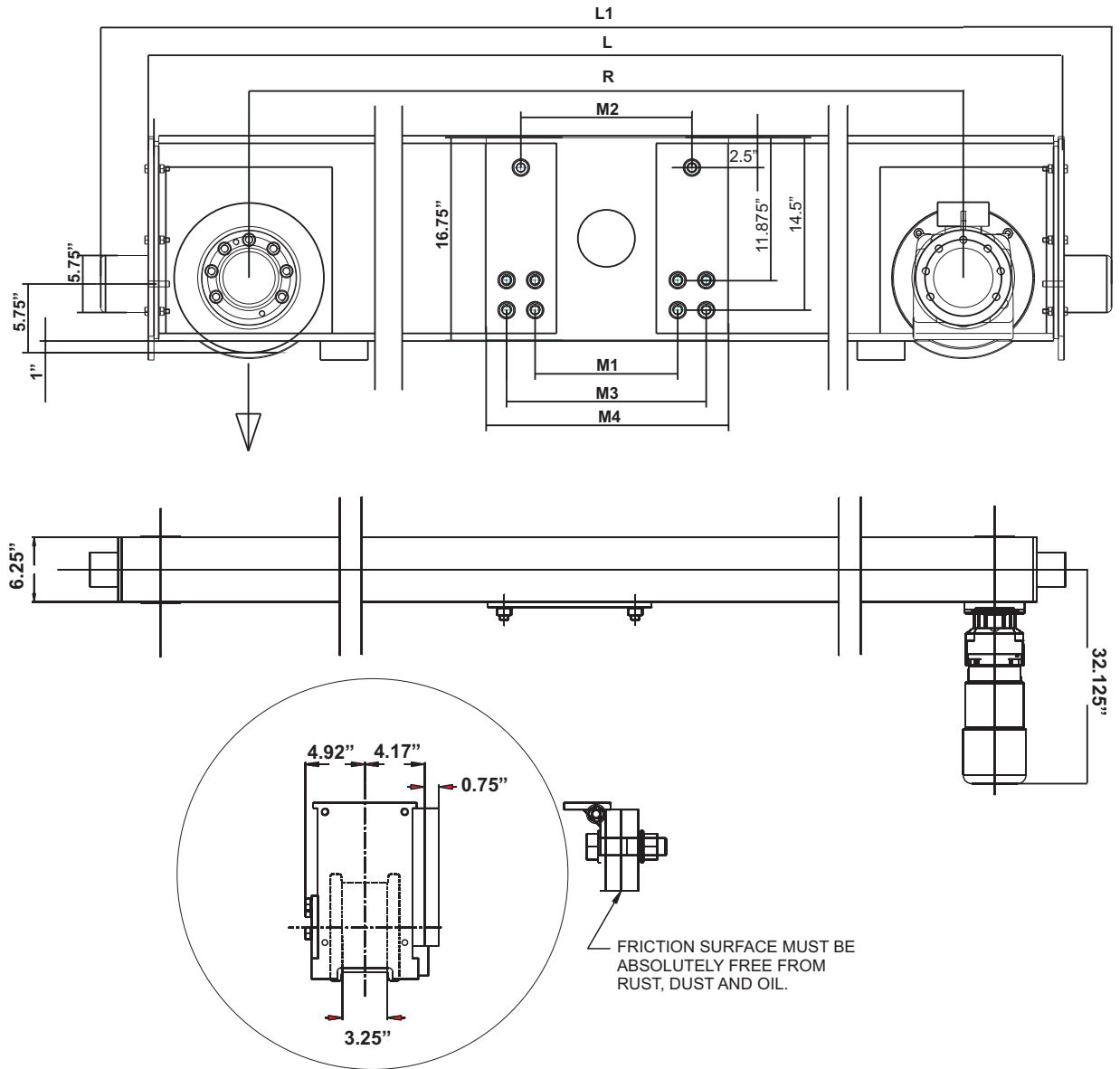


Specifications for EMH Style HSE315 Top Running Single Girder Endtrucks 12 in. Diameter Wheels



Model No.	Wheel Load	Moving Mass Lbs.	120 fpm Motor HP	Wheel Base (R) Ft.-In.	L Ft.-In.	L1 Ft.-In.	M1 In.	M2 In.	M3 In.	M4 In.	Weight per Pair
HSE-315.400.1900	38,700	140,000	2 x 3.0	6-3	7-7	8-4	12	14.25	16.5	20	2,136
HSE-315.400.2200	33,400	140,000	2 x 3.0	7-3	8-7	9-4	12	14.25	16.5	20	2,246
HSE-315.400.2700	27,250	140,000	2 x 3.0	8-10	10-2	10-11	12	14.25	16.5	20	2,446
HSE-315.400.3200	28,250	140,000	2 x 3.0	10-6	11-10	12-7	12	14.25	16.5	20	2,816
HSE-315.400.3800	23,800	140,000	2 x 3.0	12-6	13-10	14-7	12	14.25	16.5	20	3,086